



The Chip Pile



The Newsletter of the Central Texas Woodturners Association

Austin, Texas

A Chapter of the American Association of Woodturners

Meeting

May 7pm-9pm

All: Tips and Tricks

American YouthWorks - Austin, Texas

1901 East SH 71

(about 1/4 mile east of I-35 on south side of SH 71)

June 2nd
1st Saturday

Site: TBD (watch for email)

9 to Noon

If you need help sharpening tools, bring them!

President's Shop

In Sympathy

We are saddened by the death of **Randy Brewer** on Saturday, April 21, 2018. His funeral service was Saturday, April 28, 2018 at Navarre Funeral Home in Baytown, Texas. Please hold **Dolly**, their family, and friends in your special thoughts and prayers.

CTWA Needs You

One or two club members are needed to fill the vacant Secretary and Newsletter Editor positions for the remainder of 2018. These positions can either be combined and filled by one member or can be filled separately by two different members.

In many volunteer organizations, including CTWA, sometimes only a few members fill the officer positions. Over time not only can these individuals become overworked and burned out, but others might be denied an opportunity to serve.

Only you know if you have the talent/

skill (or would like to learn these) and desire to fill these important club positions. Please let me or one of the other officers know if you are interested in filling one or both of these positions for the remainder of the 2018.

Demonstrations

Thanks to David Dick for the long thin finial demonstration at the April meeting.

The May meeting is your chance to brag about your woodturning, tips, tricks, and jigs to the club members.

President's Challenges

June – Long thin finials. Let's show David what we can do. Finials turned on full-sized lathes and mini-lathes will be judged separately.

Mother's Day – May 13th. Please remember you mother

American Youth Works (ATW) Pen Turning – May 30th, setup around 8:30 am. There will be a second session in July. This is one of the ways we give back to AYW for the use of their facilities for our meetings. Please notify **Johnny Tolly** (jtolly47@gmail.com) if you can assist.

SWAT – August 24 – 26, Waco, Texas

Some turners see sanding as a necessary evil to finish a creation. Use the best sandpaper that you can afford and discard it when it begins to wear. Dull 220-grit is not the same as sharp 320-grit. Dull 220-grit no longer cuts—save the effort and use a newer piece of sanding paper.

Start sanding with the coarser grits until the tool marks are removed and then move forward with finer (higher) grits to remove the scratches from the previous grit. Skipping a grit or incomplete sanding with a grit might result in incomplete removal of earlier scratches. Be prepared, you may need

to restart sanding if tool marks remain after processing through the grits.

High speed lathe sanding can generate excessive heat that can produce small surface cracks. After sanding with the lathe running, turn off the lathe and sand in the direction of the wood grain to remove circular scratches. A bright light may be needed to clearly see the scratches.

Sanding bare wood and wood with a finish are different processes. Not much is gained by sanding an open grain wood with fine sandpaper that has grit smaller than the wood pores. Once a finish has been applied to an open grain wood and the pores filled, finer grits can be used to sand between the finish coats.

Continue to turn safely and enjoy your creations.

Dwight Schaeper
President

JUNE Meeting
President's Challenge
LONG-THIN FINIAL

Upcoming President's Challenges:

Both novice and non-novice turners are encouraged to participate and are judged separately. The themes and turn-in dates are:

June Meeting: Long-thin finial

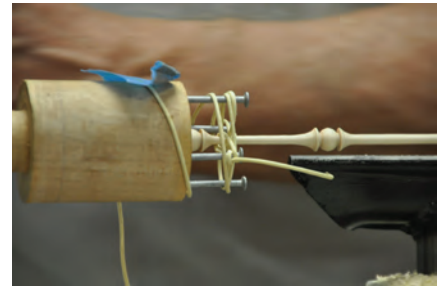
August Meeting: Beads of Courage Bowls

October or November Meeting: Christmas Ornament or Decoration.

The American Association of Woodturners is "Dedicated to Providing Education, Information and Organization to Those Interested in Woodturning." In keeping with the standards of our National Organization, the Central Texas Woodturners Association hereby gives permission for all other woodturning chapters, organizations, magazines and newspapers to use any materials contained herein for the benefit of all woodturners everywhere. We ask that credit be given for the source of the material.

Demonstrator

David Dick presented his technique for turning very long finials. CTWA thanks David for volunteering and producing a marvelous demonstration.



*Chip Pile Photo Credits:
Drew Shelton*

**AYW
Senior Pen
Turning!**

May 30th

**Contact:
Johnny Tolly
to volunteer**

Editor's Turn

I am still so saddened by the passing of Randy Brewer this past month. I know you join me in sending condolences to Dolly, and all of his family. Dolly will need all of our support and love.

This is my final "editor's turn" and it's a bittersweet moment for me. It has been my entire pleasure to serve this club with this newsletter. Due to travel and other volunteer commitments, I had to reduce my volunteer commitments.

So far, no one has volunteered to take responsibility for putting out the club newsletter. May I just encourage any of you who are good with Word, Pages or any other word editor to take up this job for the club. I have used inDesign, an Adobe product, that **Charles Kay** used before me. It's really pretty easy to learn, but by no means the only way to produce a newsletter.

The main purpose of the newsletter is to be an official record of the club's monthly meeting. The fun part is getting to let folks know about people and events pertinent to the club. It's also a great way to get to know everyone in the club.

I'll be seeing you as I can get to the meetings and first Saturday's, and definitely SWAT!

My deepest regards and thanks for your trust in me to get this done for so long.

Keep turnin' it on!
Hilda Carpenter

Members in the News

Our own **Craig Timmerman** is a lead demonstrator at the SWAT Symposium! Congratulations, Craig.

SWAT Update

Symposium

- Scheduled for August 24-26, 2018 at the Waco Convention Center
- Setup will take place on Thursday, August 23rd and tear down after Sunday's banquet and drawings.
- Lunch during setup on Thursday, August 23rd, is provided by SWAT but you must register your intention to help with Operations 2 weeks prior to SWAT. You'll receive a lunch ticket and that ticket is required to eat.
- On the SWAT Website, use the "Registration" link to secure your attendance.
- The Hilton and Court Yard hotels have special pricing for SWAT attendees, so get your reservations in.
- Friday night's special is a turn-off between **Stuart Batty, Buddy Compton and Ashley Harwood**. Be sure you sign up for this and the "Cajun Dinner" that goes with it.

Lead Turners - Tentative List

- **Stuart Batty**
- **Keith Gottschalk**
- **George Hatfield**
- **Dan Tiden**
- **Craig Timmerman**
- **Alan & Lauren Zenreich**

Regional Turners

- **Andy Chen**
- **Jim Burt**
- **Jim Creel**
- **Jerry Degroot**
- **Cindy Drozda**
- **Dennis Ford**
- **Jeff Hornumg**
- **Sammy Long**
- **Tod Raines**
- **Tomi Ransfield**
- **John Schlobohm**
- **Lee Sky**
- **John Solberg**
- **James Thurman**
- **Donald Ward**
- **Cory White**

2018 SWAT TO DO LIST!

1. Register
2. Book your hotel
3. Finish your gallery entry
4. Finish as many beads of courage boxes as possible

**TIME IS
RUNNING
OUT DON'T
WAIT UNTIL
THE LAST
MINUTE!**

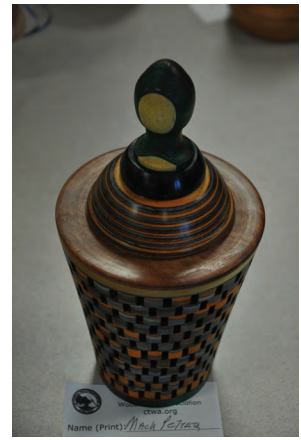
Gallery & Bring Back

Thanks to all the members who contributed items to the gallery.

Courtland Hunt (2); Herb Ingram, Mack Peterson; Johnny Tolly(3) from Walnut tree felled by hurricane Harvey; Ed Roberts; Dave Wolter; Sallem (3); Jim Spano; Johnny Tolly

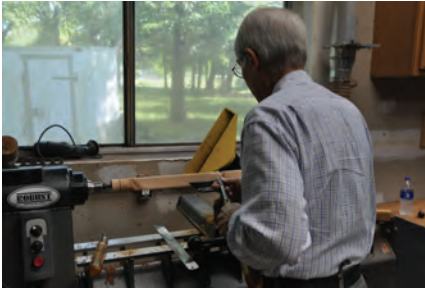
*Bring back Drawing [entrant:winner]
(If you won an item, be sure to bring something back to the next meeting):*

**Austin Krause: Gary Beers;
Gary Beers: Austin Krause; Gary Beers: Austin Krause; Jim Spano:
Greg Bowers; Jim Spano: Dwight Schaeper; Austin Krause: Dvid Dick**



First Saturday

Greg Stowers hosted May's first Saturday. Thanks Greg for providing a great venue!



Membership in CTWA

We welcome NEW MEMBERS to join our band of merry turners anytime. An interest in woodturning is the only requirement. Dues are \$35.00 per year, prorated to \$3.00/month for new members. \$45 Family.

With your membership, whether you are experienced or a novice, we will teach you, or learn from you, and build long-lasting friendships based on a common kinship of matching wood, metal, machine and man, or woman as the case may be.

CTWA members are also encouraged to join the American Association of Woodturners, AAW. AAW dues are: General (\$60); Family (\$65) includes up to three family members living in same household on the membership card. For full details and membership form visit the AAW site at woodturner.org

Classifieds

A very fine pen turner who apprenticed under nationally known, **Don Ward**, has to sell all of his equipment due to lack of room after moving. Please consider \$2000 (**or best offer**) for the entire package, any woodturner wanting to get started in turning and especially pen turning will be delighted with this! Contact Hilda Carpenter or Steve Green to see or purchase. 512-395-7782 or 512-395-7776

- Jet Mini-lathe (will require some cleaning to remove rust from lathe bed and tail stock spindle)
 - w/multiple tool rests
 - w/multiple drive and live centers
 - w/pen blank drill chuck
 - w/mini-lathe stand
 - w/Beall collet chuck set
 - w/Jacobs check
- 8" slow speed grinder w/white grinding wheels
 - w/wolverine grinding system with Vari-Grind
 - w/wolverine dressing jig
- 10" Genera Machinery disc sander

- w/squaring jig
- w/pen blank sanding jig
- Drilling Tools
 - Drill Doctor - drill bit sharpener
 - Misc drill bits for pen kits
 - Forsner drill bit set from 1/4" to 2 1/8" in wood case
- Electronic calipers
- Pen Making
 - Pen Press
 - Pen disassembly set i.e. punch tools
 - Misc pen bushings
 - Misc pen kits
 - Misc pen blanks, wood and acrylic
 - Books on pen making
- Gouge Tools
 - 8 piece Benjamin Best wood turning set in wood case
 - 8 piece Robert SorbyNone wood turning set
- Misc
 - Sand paper
 - Micromesh

Business Meeting

No business meeting notes submitted to editor in time for press! Please contact the secretary, Pat Little for information.

Upcoming Demo's & Classes

**Intermediate Class June 9-10
Contact Drew Shelton if interested**

2018 Calendar

The calendar listings are an attempt to keep you up to date on upcoming CTWA events, as well as other events of particular interest to woodturners. All regular 3rd Tuesday CTWA Meetings are at American Youthworks. Check Website for latest information.

All 1st Saturdays are from 9 am-noon. All meetings are 7 PM to 9 PM
Events & Dates subject to change, watch for emails or website notifications

May 15 CTWA Meeting
Demonstrator: All Members:
Tips & Tricks

June 2 1st Saturday
Site TBD

June 9-10 Intermediate Class

June 19 CTWA Meeting
Demonstrator: All Members:
Finishing Tips & Tricks
Long Stem Challenge

July 7 1st Saturday
Site: TBD

July 17 CTWA Meeting
Demonstrator: TBD

Aug 4 1st Saturday
Site: TBD

Aug 21 CTWA Meeting
Demonstrator: TBD

Aug 24-26 SWAT, Waco, TX

Let Pat Jenkins know if you would like to demonstrate to the club in 2016 or you know someone who would be a great demonstrator for our club. We need presenters.

Volunteer Instructors

SOUTH

Stacey Hager 512.282.1036
basics, spindles, sharpening,
hollow vessels

Johnny Tolly 512.858.4471
basics, open segmented

Jimmy Tolly 512.894.0686
basics, platters

Craig Timmerman 512.288.3598
basics, square turning,
hollow vessels

Hilda Carpenter 512-395-7782
Airbrushing, tool handles, bowls,
Drozda finials, sea urchin orna-
ments, bottlestoppers

Jack Besperka 512.261.4682
decoration & finishing

NORTH

Jim Spano 512.835.5023
novelty items, tops, shop gadgets

Len Brissette 512.258.4004
bowls, platters, sharpening

ROUND ROCK/ GEORGETOWN

Ed Roberts 512.255.3294
basics, platters

Drew Shelton 512-863-4651

Volunteer Your Shop for First Saturday!

1. It doesn't need to be fancy, or big.
2. We'll bring the lathes.
3. You make the coffee.
4. Drew Shelton brings the donuts and asks for a contribution from all the folks who show up to offset his costs.
5. Have enough room for at least 1-2 turners (easy in the summer).
6. Let Erik Peterson erik-sp@aol.com or Jason Schoenfeld know!

2018 Officers

President-

Dwight Schaeper
dscha449@yahoo.com
512-517-1345

President-Elect

President

Jason Tunnell
jdtunnell@gmail.com
512-630-9771

Past President & Board President

Vaden Mohrmann
vmohrmann@gmail.com
512-658-7508

Program Chairman

Pat Jenkins
jpjen@austin.rr.com
903-926-5180

Board Secretary

Pat Little
patlittle46@yahoo.com
512-423-0508

Board Treasurer

Len Brissette
mesquite901@gmail.com
512-258-4004

Director

Drew Shelton
dcshelton@gmail.com

Director

Joe Schoenfeld
showey4u@yahoo.com
Director and SWAT Representative
Steven Green
stevenjgreen@mac.com
512-395-7776

VOLUNTEERS

Membership Chairman

Blair Feller
blair.feller@gmail.com
830-385-2782

Newsletter Editor

Hilda Carpenter
hildac@mac.com
512-395-7782

Webmaster

Vaden Mohrmann
vmohrmann@gmail.com
512-658-7508

Audio/Visual Coordinator

Greg Vest
512-736-2715
sounddudeaustin@gmail.com

First Saturday Coordinator

Erik Peterson
erikpsea@aol.com
830-598-5352
Joe Schoenfeld
showey4u@yahoo.com
512-560-0407

Librarian

Suzi Parker
suziparker@hotmail.com
512-266-0824

CTWA Web Site
www.ctwa.org

The Chip Pile

Central Texas Woodturners Association
A chapter of the American Association of Woodturners

Hilda V. Carpenter
560 Moss Rose Lane
Driftwood, TX 78619

To:

Meeting Location

The CTWA meets at American YouthWorks, 1901 East Ben White Boulevard (Texas 71) in south Austin. The building is on the south side of Ben White, just east of Interstate 35. The best entry is off Woodward Street, just south of a little strip center. You enter an alleyway into a lighted parking lot. We will enter through the back door. As you drive in, you will see a truck dock in the back of the building with a big roll-up white door. The entryway is just to the right of the truck dock. Folks coming from the north may want to exit I-35 at Woodward and proceed south on Woodward across Ben White.

