



The Chip Pile

The Newsletter of the Central Texas Woodturners Association

Austin, Texas

A Chapter of the American Association of Woodturners

September 19, 2017
Jim Brinkman

7pm-9pm

American YouthWorks - Austin, Texas
1901 East SH 71

(about 1/4 mile east of I-35 on south side
of SH 71)

October 7th
1st Saturday

Site: Stacey Hager
9215 Chisolm Lane, 78748
512-282-1036
9 am - Noon

If you need help sharpening
tools, bring them!

President's Shop

Happy 30th Anniversary Wood Turners!

Can you believe the club has been around 30 years? AAW records show our club was founded September 15, 1987! I was thinking back to 1987 and things from that year. I wasn't turning yet and had just moved to Round Rock over the summer. And wow have things changed around here! Speaking of change, lets look at a new logo. While you are finishing up that piece for the parks auction for **Drew Shelton** (due this month), rough turning something for American Youth Work (due in October) or planning that amazing white ele-

phant turning for the Christmas party (December 9th) be thinking about a logo design. You want an incentive? Okay, lets make it a contest, entries are due by the October meeting for online voting ending for the November meeting. Oh the incentive, lets call it \$50 in gift certificates to the winner.

By now I assume everyone has heard, but if you haven't our very own Programs Chair **Pat Jenkins** came home from SWAT with a brand new Robust lathe he won at whatever we are calling the thing with tickets at the end of the symposium. Be sure to congratulate Pat! This turned out be lucky for me as Pat needed to make room for his windfall and I wanted a bigger lathe. A huge thanks to Pat for helping me move his old lathe to my shop. Not only did he arrange helpers to move the 650lbs lathe, he provided homemade cookies! If it weren't for the kindness of the Tolly's letting us borrow a nice trailer and a fancy lathe dolly it could have been much more work. I'm always amazed at giving nature of the club members. Whether its at meetings, SWAT or one on one the members are always quick to step up and lend a hand. It makes me proud to be a member and thankful I've gotten to be president of the organization this year.

I'm on the backside on my presidential term for the club and I'm sure **Dwight Schaeper** is looking forward to being done hosting the gallery as he gets ready to take over for 2018. If you are interested in becoming an officer please come talk to me and/or Dwight with any questions. Elections are coming up in November for new club officers!

Its a lovely fall evening here in Central Texas, where it's in the 70's, and that means it cool enough to play in the shop! I'm off to make a mess using my new lathe!

Vaden Mohrmann
President

Chip Pile Photo Credits:
Drew Shelton
& Johnny Tolly

Monthly Features

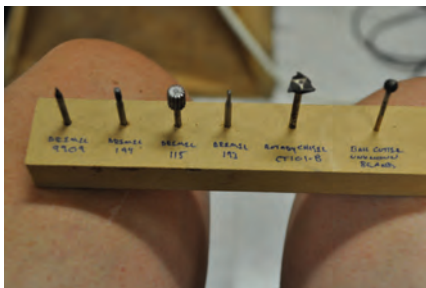
- Business Meeting, p. 8**
- Calendar, p. 8**
- Classified Ads, p.**
- Editor's "Turn", p. 3**
- Feature Presenter, p. 2**
- First Saturday, p. 7**
- Gallery & Bring back, p. 4-6**
- Membership Information, p. 7**
- Members in the News, p. 3**
- Officers, p. 8**
- Photo Credits, p. 1**
- President's Shop, p. 1**
- Upcoming Demo's./Classes, p. 8**
- Volunteer your Shop, p. 9**
- Volunteer Instructors, p. 8**

EXTRA:
BEADS OF COURAGE, p. 6
CTWA 30 yr History, p. 9

The American Association of Woodturners is "Dedicated to Providing Education, Information and Organization to Those Interested in Woodturning." In keeping with the standards of our National Organization, the Central Texas Woodturners Association hereby gives permission for all other woodturning chapters, organizations, magazines and newspapers to use any materials contained herein for the benefit of all woodturners everywhere. We ask that credit be given for the source of the material.

Demonstration Craig Timmerman Turquoise Inlay

AAW Demonstrator, Craig Timmerman, demonstrated his techniques for inlaying Turquoise into his art. Craig is an amazing wood artist and CTWA is quite fortunate to have him in our club. Thank you Craig.



Editor's Turn

It's the time of year again when kids go back to school, the weather finally starts to feel like the oven was turned off, and the annual call for volunteers to help keep CTWA going!

Our club exists only by volunteers who give their time and talents to keep our club healthy and running smoothly.

If you are interested in volunteering for a position on the board, or as a volunteer chairperson, please raise your hand—or better still, send **Dwight Schaper, Vaden Mohrmann** or me an email.

Various positions require different amounts of time. There are positions that constitute the board of directors, and other positions that are advisors and committee chairs.

The President spends time thinking up challenges, making sure the entrants are judged and rewarded. The safety and upkeep of the Craft Supplies certificates, AYW building key. He/She writes a monthly column for the newsletter, and assists in identifying a President elect for the next year. The president additionally serves as the public face of CTWA. The primary qualification is to have good meeting management skills, to be an active turner and demonstrator. The President additionally may form various committees at his or her direction that benefits the club

BOARD POSITIONS:

The President Elect primary responsibility is to secure the next President Elect. He or she also introduces the instant gallery. Additionally, the President Elect is responsible for identifying the national turner who will come to our location and provide classes and an all day demo. This person stands in when the President is unable to attend a meeting, or becomes ill. The qualification is equal to the President.

The Treasurer is a key person on the board. This person holds fiscal respon-

sibility for paying the bills, tracking income and expenses, and annual reporting to the IRS and State. This person should hold a membership with CTWA for over 5 years. The treasurer also works with the President Elect or President to identify an annual audit committee to review the books.

The secretary/newsletter person is responsible for being the "historical reference" for the club. All monthly business meetings are contained in the Chip Pile. The Chip Pile is published monthly prior to the next meeting. This publication includes photos from the demonstrator, gallery, first Saturday and any other key event or member that sends photos or articles. The secretary is responsible for editing (with the help of any reader) the publication so that it is a professional, public image of the activities in CTWA. The secretary keeps all reports from the treasurer, board, and activities pertinent to the operation of the club. This includes procedures for meetings, rewards, honorarium, and installation of new officers. The qualification is Adobe InDesign skills, writing, and record keeping. This person should be a CTWA member for at least 3 years. The secretary may be called in to photograph the demonstrator and gallery if a photographer is unavailable.

Program Chair is responsible for identifying suitable demonstrators for each meeting. Additionally, the program chair may assist the President Elect in identifying a national demonstrator. This person should be an active CTWA member for at least 2 years; and attend SWAT for the purpose of identifying regional demonstrators.

Past President is responsible for assisting any board or volunteer member. This person also becomes the SWAT representative for the club. This includes arranging for room volunteers and A/V help at SWAT. Attends SWAT officer meetings during the year.

VOLUNTEER MEMBERS:

The Membership chair is responsible for keeping the Excel file of all current

paid members and past members who have defaulted on their dues. The person should be an active CWTA member for at least a year and have good organizational skills and proficiency with Excel. All dues are delivered to the Treasurer.

The librarian is responsible for maintaining books, DVDs for members to check out of the library. The librarian additionally collects money from the rentals and turns them into the treasurer at the end of each meeting.

A/V Coordinator films all demonstrations at each meeting. Responsible for setting up for SWAT and recording all room demonstrators. Sound, light, DVD ripping, recording needs to be professional quality. This person also recommends new technology for purchase to keep CTWA equipment to the same professional level as other leading clubs in SWAT.

Webmaster is responsible for maintaining the CTWA.org site, managing information flow and social media. This person works closely with the monthly photographer and secretary to post pictures and the Chip Pile.

1st Saturday Coordinator arranges sites for each first Saturday and delivers the club lathe to the site.

I probably missed something, and may have given you too much data, so don't be afraid of any position. We all pull together to keep CTWA running smoothly! Plus, it's a great time!

Keep turnin' it on,
Hilda Carpenter, Editor

Members in the News

Congratulations to our own **Pat Jenkins** for winning the grand prize drawing for the Robust Lathe! The club members won several valuable items.

If you couldn't make SWAT this year, plan on attending next year. It's fun!

Gallery

Thanks to all the members who contributed items to the gallery.

Drawing (If you won an item, be sure to bring something back to the next meeting):

Lauren & Alan Zenrie 2 Maple pendants decorated

Marcia Tolly Maple practice piec

Fletcher Roberts Osage orange bowl

Jimmy Tolly 2 Ash bowl, Mesquite bowl, Mesquite Beads of Courage

Jack Besperka Pear & birds-eye maple box, Pear Box

Jim Brinkman Black & tan pilsner glass, Lidded box

Mac Peterson AZ Mesquite vase, Maple platter

Dwight Schaeper Poplar & walnut Beads of Courage box, Poplar & curly beech Beads of Courage box

Blair Feller 3 Ash bowls, Cedar elm bowl

Drew Shelton Satinwood & Walnut Femisphere

Stacey Hager Shop made augers, Pecan sphere and stand, Pecan bowl

Austin Krause Spalted maple bowl, Hackberry bowl

Bring backs:

Jim Spano Cedar Elm CD spin top and Curly Maple candy jar went to

Austinn Krause, Tulip wood candy jar went to **Barrett Lyn**

Gabi Glass Purpleheart Vertex pen went to Gary Beers; her pen blanks went to **Barrett Lyn**; her Brazilian hardwood pen went to **Gary Beers**

Pat Jenkins Pecan platter went to **Jim Spano**

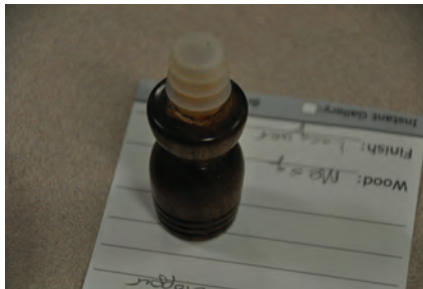
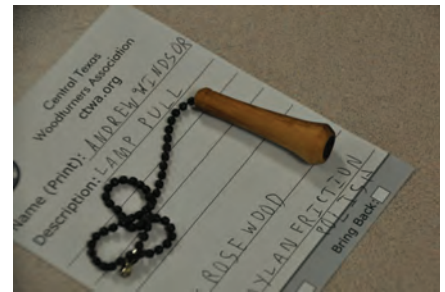
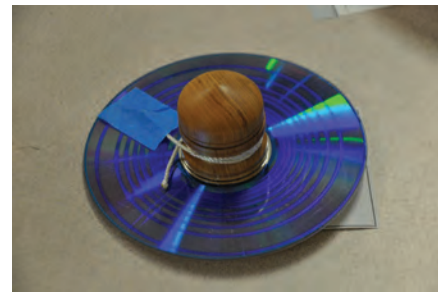
Andrew Windsor Rosewood Lamp pull went to **Austin Krause**

Austin Krause Bocote bottle stopper went to **Barrett Lyn**

Suzi Parker "Spano" Walnut spin top went to **Barrett Lyn**; her Mesquite bottle stopper went to **James Osborne**

Gary Beers Figure Maple bowl went to **Barrett Lyn**

We need more bring backs to raffle at the meeting. Please consider donating one, or if you owe one, please bring it!





Congratulations Beads of Courage Box Winners:

- 1st John & Marcia Tolly: Dragon**
- 2nd Herb Ingram**
- 3rd Gary Beers**





select a special box for them to store their treatment beads.

907 people attended SWAT in Waco. 247 BoC boxes produced from various turning clubs attending SWAT. Hunt County Wood Turners donated 26 BOC boxes to our club, CTWA because they didn't make contact with a hospital in their area to accept the BoC boxes. This kind gesture enabled me to donate 11 of my BoC boxes to **Ken Mays** to take to Scott And White Children's Hospital in Temple. Another 10 of my BoC boxes were sent to Omaha Nebraska to the Children's Hospital with **Betty Zumwalt**. She is a member of the Nebraska turning club and is a driving force to get turners up there to make the BOC boxes.



Beads of Courage Boxes Delivered

Eight CTWA members along with **Pat Jenkins** wife, **Bea**, delivered the Beads of Courage (BoC) boxes on Thursday 31 August 2017 to the Strictly Pediatrics Children's Hospital, located on the Old Robert Muller Airport grounds.

I sincerely wish to thank each member of the CTWA that made a BOC box. I encourage each member to make at least one Beads of Courage box for 2018.



In the picture, is a young girl that is in treatment. She selected the colorful butterfly box with a yellow lid. Other children were present and each was encouraged to

—Johnny Tolly

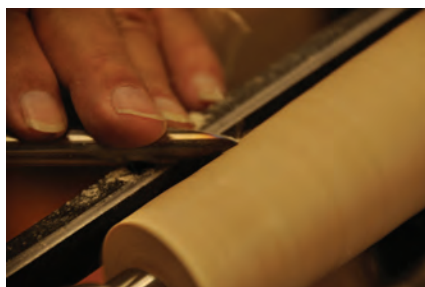


Pictured above: Drew Shelton, Herb Ingram, Bea & Pat Jenkins, Len Brissette, Jimmy Tolly, Jim Spano, Marcia Tolly, Johnny Tolly
Picture Left: SWAT BoC Boxes in the gallery



1st Saturday

Erik Peterson hosted the first Saturday for the club.



Classifieds

Johnny Tolly has the following items for sale. Contact him directly about them, 512-922-1241 cell
Tolly tailstock adapter, used when vacuum chucking to align objects to the vacuum chuck. Tolly small thickness gauges, to measure the wall thickness in the opening and shoulder of turnings. Tolly center finder, used to align a chuck or faceplate to woods, and has other uses.

contest in 2006 (Charlie Kay)
Set-up and tear down crew for SWAT every year (Johnny, Jimmy, Marcia Tolly and multiple CTWA members)

Membership in CTWA

We welcome NEW MEMBERS to join our band of merry turners anytime. An interest in woodturning is the only requirement. Dues are \$35.00 per year, prorated to \$3.00/month for new members. \$45 Family.

With your membership, whether you are experienced or a novice, we will teach you, or learn from you, and build long-lasting friendships based on a common kinship of matching wood, metal, machine and man, or woman as the case may be.

CTWA members are also encouraged to join the American Association of Woodturners, AAW. AAW dues are: General (\$55); Family (\$60) includes up to three family members living in same household on the membership card.

Youth, under 19 years of age (\$24)
Online (\$45 per year)

Online members do not receive printed versions of the American Woodturner journal and the "Resource Directory," available through online access. Artist (\$81) business insurance. For full details and membership form visit the AAW site at woodturner.org

Business Meeting

Vaden Mohrmann opened the meeting by welcoming visitors: **Alan ?, Lauren Enricht, Dennis Graft, Bill Stewler, Jeannie Oswalt, and Garrett Lynn.**

Christmas Party and 1st Saturday will be held the 2nd Saturday in December at **Pat and Clyde Little's** house.

Drew Shelton has the SWAT shirts, **Marcia Tolly** passed around the signs for setting up and tearing down at SWAT. **Steve Green** gave the update on SWAT and passed around room sponsor and AV signups. There will be 50 vendors and the Leichtenburg burner will be available for sale.

Dwight Schaper presented the gallery, then **Pat Jenkins** introduced **Craig Timmerman** for the demo. 46 people attended.

Upcoming Demo's & Classes

September 19 **Jim Brinkman** (topic tbd)

October 17 TBD

November 4th **Jim Creel**

2017 Officers

President

Vaden Mohrmann
vmohrmann@gmail.com
512-658-7508

President-Elect

Dwight Schaeper
dscha449@yahoo.com
512-517-1345

Program Chairman

Pat Jenkins
jpjen@austin.rr.com
903-926-5180

Secretary/Newsletter Editor

Hilda Carpenter
hildac@mac.com
512-395-7782

Treasurer

Len Brissette
mesquite901@gmail.com
512-258-4004

Membership Chairman

Blair Feller
blair.feller@gmail.com
830-385-2782

Webmaster

Vaden Mohrmann
vmohrmann@gmail.com
512-658-7508

Audio/Visual Coordinator

Greg Vest
512-736-2715
sounddudeaustin@gmail.com

First Saturday Coordinator

Erik Peterson
erikpsea@aol.com
830-598-5352

Librarian

Suzi Parker
suziparker@hotmail.com
512-266-0824

CTWA Web Site

www.ctwa.org

Swat Rep:

Steven Green
stevenjgreen@mac.com
512-395-7776

Editorial Information

The Editor welcomes any written materials and will provide assistance with getting your information into publishable form if you want. **DEADLINE IS THE FIRST MONDAY OF THE MONTH.** Contact at 512.395-7782, by E-mail at hildac@mac.com or mail them to:

The Chip Pile

c/o Hilda Carpenter
560 Moss Rose Lane
Driftwood, TX 78619

2017 Calendar

The calendar listings are an attempt to keep you up to date on upcoming CTWA events, as well as other events of particular interest to woodturners. All regular 3rd Tuesday CTWA Meetings are at American Youthworks. Check Website for latest information.

All 1st Saturdays are from 9 am-noon. All meetings are 7 PM to 9 PM
Events & Dates subject to change, watch for emails or website notifications

September 19 CTWA Meeting
Jim Brinkman

October 7 1st Saturday
Site: Stacey Hager

October 17 CTWA Meeting
Demonstrator: TBD
Nominations for 2018 officers

November 4 1st Saturday
Site AYW

November 4th (NOTE CHANGE)
CTWA Meeting
Election of 2018 officers
Demonstrator: Jim Kreele

December 9th CTWA Christmas Party
(no regular meeting)

Let Pat Jenkins know if you would like to present to the club in 2016 or you know someone who would be a great demonstrator for our club. We need presenters.

Volunteer Instructors

SOUTH

Stacey Hager	512.282.1036
basics, spindles, sharpening, hollow vessels	
Johnny Tolly	512.858.4471
basics, open segmented	
Jimmy Tolly	512.894.0686
basics, platters	
Craig Timmerman	512.288.3598
basics, square turning, hollow vessels	
Hilda Carpenter	512-395-7782
Airbrushing, tool handles, bowls, Drozda finials, sea urchin orna- ments, bottlestoppers	
Jack Besperka	512.261.4682
decoration & finishing	

NORTH

Jim Spano	512.835.5023
novelty items, tops, shop gadgets	
Len Brissette	512.258.4004
bowls, platters, sharpening	

ROUND ROCK/ GEORGETOWN

Ed Roberts	512.255.3294
basics, platters	
Drew Shelton	512-863-4651

Volunteer Your Shop for First Saturday!

1. It doesn't need to be fancy, or big.
2. We'll bring the lathes.
3. You make the coffee.
4. Drew Shelton brings the donuts and asks for a contribution from all the folks who show up to offset his costs.
5. Have enough room for at least 1-2 turners (easy in the summer).
6. Let Erik Peterson erik-sp@aol.com know! Or email the editor.

Confirmed Sites for 2016:

October 7 Stacey Hager

November 4 American Youth Works

CTWA 30 yr History

Recently, the AAW requested information about our club to honor us turning 30 years old! This is what I sent them with the help of **S. Gary Roberts, Charlie Kay, Stacey Hager, Jim Spano and Bob Hrehor.**

—Hilda Carpenter, Editor

What motivated the founders to start a chapter?

S. Gary Roberts, one of the founders, had been a founder of AAW, rushed home from that meeting to charter a chapter. Talking with S. Gary is CATWA was the second AAW affiliate chartered. It was a new concept and we were anxious to be part of the new organization.

How many joined the new chapter?

There were about 40 new members that signed up that night.

Who were the founders?

S. Gary Roberts, James J ohnston (now of Kerville), and **Charley Collins**

Where did the first group meet?

Paxtons Fine Woods Building in Austin

How much were the dues?

\$12.00 per year

Are there any original members still involved with the chapter?

S. Gary Roberts, and Bob Hrehor

What are some of the favorite memories of the chapter?

Starting the TTT and SWAT. We were one of the three chapters to help get the TTT going down in **Mark Potter's** barn

Achieving our 25th Anniversary

Growing our membership each year by welcoming new turners and teaching young turners

Building a relationship with Dell Children's Hospital and delivering hundreds of Beads of Courage Boxes

What are some of the milestones of the chapter?

Getting our OneWay Lathe (**Stacey Hager**)

S. Gary Roberts started the first "Bring Back Raffle" here to help fund our activities and it became adopted by many other chapters around the country.

Getting one of the first AV set-ups (**Stacey Hager**)

Setting up First Saturday (**S. Gary Roberts**)—many other chapters followed CTWA's lead to set up other semi-social events

Winning the AAW Chapter newsletter (**Charlie Kay**)

Working in tandem with American Youth Works (AYW) to use their classroom space as our meeting space (**Johnnie Perales**)

Dedicating a day to turn pens for the graduating seniors of AYW (**Johnny Tolly**)

Donating turnings to AYW's annual fundraiser auction

Donating turned Beads of Courage Boxes to Dell Children's Hospital (one of the first SWAT clubs to begin this effort. Started by **Johnny, Jimmy and Marcia Tolly**)

Continuing to grow our membership by welcoming new turners to First Saturday experiences

Annual Beginners' Training (**Drew Shelton and Jim Spano**)

Annual Christmas Party with turning exchanges (**Pat and Clyde Little**)

How has the AAW affiliation affected the chapter?

Arranging for insurance, including officer insurance

Credibility asset for recruiting members

Recruiting world-class turners for classes to our members

