



The Chip Pile



The Newsletter of the Central Texas Woodturners Association

Austin, Texas

A Chapter of the American Association of Woodturners

November 17, 2015

Jim Brinkman

7pm-9pm

American YouthWorks - Austin, Texas

1901 East SH 71

(about 1/4 mile east of I-35 on south side of SH 71)

**December 12th
1st Saturday &
Christmas Party**

9 am - 3 pm

Clyde Little

14307 Geronimo, Volente

512-413-6931

If you need help sharpening tools,
bring them!

exchange of turning and there is always great food. I assume Pat will hand out a sign-up sheet at our November meeting for volunteers to prepare a dish to share with all of us at the party. Pat and Clyde always make this a great party and we all have a lot of fun.

My wife and I had a great Halloween and we hope you did too.

May you all have a wonderful Thanksgiving and Christmas.

God Bless,
Jay Littlefield

a national demonstrator so the chair would only be responsible for the monthly demonstrators. **Jim Spano** volunteered to coordinate the beginning and intermediate class.

Hilda Carpenter announced that she will discontinue the expense of printing the Chip Pile. She will have something for new members and visitors in the future.

Suzi Parker announced a new opportunity to check out 5 CD's at a time.

Jay then turned the meeting over to **Dwight Schaeper**.

Business Meeting

Jay Littlefield called the meeting to order and announced visitors, **John Taylor, Gary Biers, Ed Jones and Gabi Glass**. Pat and Clyde Little announced the Christmas party for December 12th. We will have a sign up sheet next month for side dishes for us to bring to share.

Charlie Kay thanked people who bought his tools and other items and requested that you please come pick them up! He will set a future date for folks who might be interested in the remaining items for sale.

Steve Green presented the current slate of officers for next year, noting that we still did not have a volunteer for Program Chair. He suggested that we break apart the duty for finding

Monthly Features

- Business Meeting, p. 1**
- Calendar, p. 7**
- Classified Ads, p. 7**
- Editor's "Turn", p. 3**
- Feature Presenter, p. 2**
- First Saturday, p. 6**
- Gallery & Bring back, p. 4-5**
- Map, p. 8**
- Membership Information, p. 7**
- Members in the News, p. NA**
- Officers, p. 7**
- Photo Credits, p. 3**
- President's Shop, p. 1**
- Upcoming Demo's./Classes p. 5**
- Volunteer your Shop, p. 3**
- Volunteer Instructors, p. 6**

EXTRA:

- Christmas Party, p. 2**
- Nominees for 2016, p. 3**

President's Shop

Welcome to our CTWA November Newsletter.

Hopefully everyone got their turning done for the AYW auction, they do so much to support our group that it is important that we support them.

I would really like to thank all of the people that volunteered to be club leaders, we could not do this without your help. It is not too late to add your name if you are interested. If so please see Steve Green. Those being elected will be President, President Elect, Treasurer, Secretary, and Program Chair. All other positions are voluntary ; Membership Chair, Web Master, etc.

Our Christmas party will be at Pat and Clyde Little's house on Dec 12. It starts at 9 am and usually runs through 3 pm. There will be a white elephant

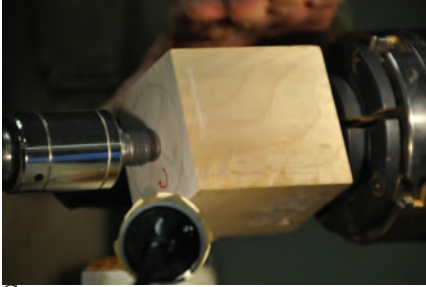
The American Association of Woodturners is "Dedicated to Providing Education, Information and Organization to Those Interested in Woodturning." In keeping with the standards of our National Organization, the Central Texas Woodturners Association hereby gives permission for all other woodturning chapters, organizations, magazines and newspapers to use any materials contained herein for the benefit of all woodturners everywhere. We ask that credit be given for the source of the material.

Demonstration
Dwight Schaeper

Dwight Schaeper demonstrated how to turn Bird House tree ornaments using skill building techniques for beginner turners.



Keeping Austin Turning Since 1988



CTWA would like to thank Dwight for sharing his expertise and ideas.

**CTWA
 Christmas Party!
 December 12th**

Every year the club hosts a terrific Christmas party and the venue is provided by Clyde and Pat Little.

We start at 9 am with 1st Saturday-type fun in Clyde's shop. The cooking people help Pat in her beautiful kitchen.

Each member brings a dish to share and the club provides the meat and drinks.

Around noon we gather in the house to have a wonderful Christmas Dinner followed by the gift exchange.

The best part is we bring an item to put under the tree for the infamous White Elephant gift exchange. Don't worry if you are a new turner, just wrap and bring something that is your best turning effort.

Kids are welcome!

Volunteer Your Shop for First Saturday!

1. It doesn't need to be fancy, or big.
2. We'll bring the lathes.
3. You make the coffee.
4. Drew Shelton brings the donuts and asks for a contribution from all the folks who show up to offset his costs.
5. Have enough room for at least 1-2 turners (easy in the summer).
6. Let Len Brissette
lbrissette@austin.rr.com
know! Or email the editor.

Confirmed Sites for 2015:

Dec: 12 Clyde Little (Christmas Party)

Editor's "Turn"

What is it about some stores and people start decorating for Christmas before Halloween? I must admit that I never jumped on the decorating band wagon. I'm a little like Scrooge in that all I can think about as I put up decorations is the work it will be to take them down. Oh my, I have told you the darker side of my personality, haven't I? Thankfully Steven is like a little elf and has a great time decorating! He's so cute and definitely makes putting up decorations worth it.

Now, don't get me wrong, I truly love celebrating the holidays and someone else's decorations—I just think it needs to wait until after Thanksgiving.

I figure all the frazzled people around Christmas are those who started decorating in October. If you, or your family, are those who have already decorated your Christmas tree before October 31st, I ask your forgiveness for the darker side of me.

What I do love is making, buying and receiving home made gifts, such as what we share at with other turners at the Christmas party. Now *that* is the epitome of the spirit of the holidays to me.

Steve and I have collected 16 pieces of our friends work in the 8 years we've been members of the club. Each one represents tremendous skill or evidence of a new turner's developing skill.

Last year we attended Budafest and bought all our Christmas gifts from the **Tolly's, Johnny, Marcia and Jimmy**; as well as some great items from **Charlie Kay**.

I hope you will consider giving away your talent by giving your family pieces of your efforts in the shop. They will cherish it even more than you think it is worthy—simply because it came from your hands.

If you are new to the club, the Christmas Party is the perfect place to make new friends, break bread together and laugh—a lot!

Hope to see you there!

Keep turnin' it on,
Hilda Carpenter
Editor

Photos

Photographs for this month's **Chip Pile** were provided by **Drew Shelton**. If you have digital photos that you would like to have considered for use in the newsletter. Send them to the Editor at hildac@mac.com.

Slate of Nominees for 2016

Officers

President
Steven Green

President Elect
Vaden Mohrmann

Treasurer
Ed Roberts

Secretary/Newsletter
Hilda Carpenter

Program Chair
Pat Jenkins

Service Positions

Librarian
Suzi Parker

Membership
Blair Feller

Website
Vaden Mohrmann

Audio Visual
Greg Vest

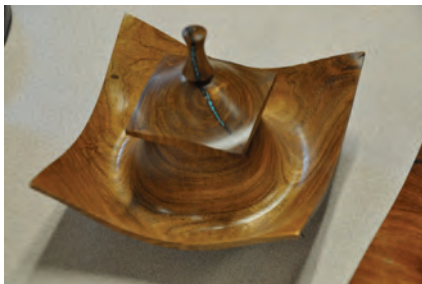
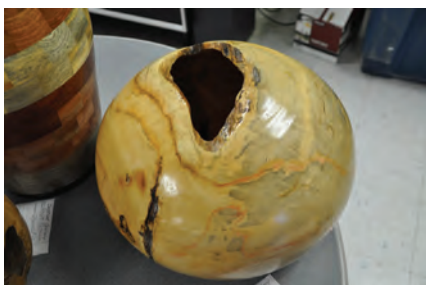
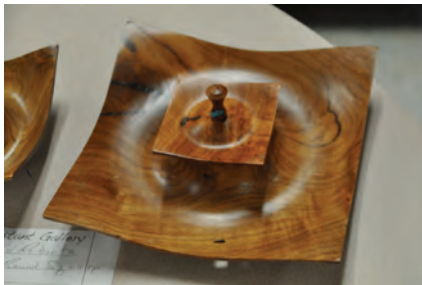
First Saturday
Len Brissette

Jay Littlefield will call for other nominations for positions during the November meeting. Afterward, we will vote as a club on the full slate of officers and service positions. If you are interested in volunteering, it is not too late to put your name in the hat.

Gallery

CTWA thanks the following participants for entering pieces in the Instant Gallery:

- Johnny Tolly:** Beads of Courage Boxes, Golf ball Xmas ornament
- Jimmy Tolly:** Rolling pins and tools
- Chris Van Peski:** Weed pot
- Vic Johnson:** Pen, Natural edge pear bowl
- Jim Brinkman:** Dogwood crotch (2 halves)
- Gabi Glass:** Calligraphy oblique pen holder, Fountain pens
- John Lovelady:** Grapes & plate & stem goblet
- Ed Roberts:** Round square box
- Jason Tunnell:** Pens
- Gene Berry:** Paint can box
- Pat Jenkins:** Black willow platter, Bowl with stand
- Nowt Peterson:** Segmented vase
- Vaden Mohrmann:** Light up sea urchin ornament, Hackberry bowl
- Randy Brewer:** Box elder hollow form, Mulberry vase



Gallery & Bring Back



Bring Back Winners:
 Joe Kirk (Pat Jenkins Pecan hollow vessel)
 Pat Jenkins (Greg Vest's art piece)
 Pat Jenkins (Suzi Parker pens)
 Ed Jones (Joe Kirk's bottle stopper)
 Pat Jenkins (Jim McKinney's bottle stopper)
 Richard Soslon (Bob Duncan's lidded box)
 Greg Vest (Joe Kirk's bottle stopper)

REMEMBER TO RETURN THE FAVOR, if you won a raffle prize—bring back your turning for next month's raffle!!



Upcoming Demo's & Classes

November: **Jim Brinkman**



January: Jim Spano and Johnny Tolly will be doing a duo demo on how to make the PVC Beads of Courage boxes using flat wood stock

1st Saturday

Thanks to Stacey Hager, who hosted October's 1st Saturday.

No pictures at the time of publication.

Volunteer Instructors

SOUTH

Stacey Hager 512.282.1036
basics, spindles, sharpening, hollow vessels

Johnny Tolly 512.858.4471
basics, open segmented

Jimmy Tolly 512.894.0686
basics, platters

Craig Timmerman 512.288.3598
basics, square turning, hollow vessels

Charlie Kay ckayda@gmail.com
boxes & bottle stoppers
512.636.3492

H. O. Evans 512.282.2830
segmented turnings

Hilda Carpenter 512-395-7782
Airbrushing, tool handles, bowls,
Drozda finials, sea urchin ornaments,
bottlestoppers

Jack Besperka 512.261.4682
decoration & finishing

NORTH

Jim Spano 512.835.5023
novelty items, tops, shop gadgets

Len Brissette 512.258.4004
bowls, platters, sharpening

ROUND ROCK/ GEORGETOWN

Ed Roberts 512.255.3294
basics, platters

Drew Shelton 512-863-4651

LOCKHART/SAN MARCOS

David Dick 512.357.6517
basics, spindles, architectural

Membership in CTWA

We welcome NEW MEMBERS to join our band of merry turners anytime. An interest in woodturning is the only requirement. Dues are \$35.00 per year, prorated to \$3.00/month for new members. \$45 Family.

With our membership, whether you are experienced or a novice, we will teach you, or learn from you, and build long-lasting friendships based on a common kinship of matching wood, metal, machine and man, or woman as the case may be.

CTWA members are also encouraged to join the American Association of Woodturners, AAW. AAW dues are: General (\$55); Family (\$60) includes up to three family members living in same household on the membership card.

Youth, under 19 years of age (\$24)

Online (\$45 per year)

Online members do not receive printed versions of the American Woodturner journal and the "Resource Directory," available through online access.

Artist (\$81) business insurance.

For full details and membership form visit the AAW site at woodturner.org.

Classified Ads

SkillSaw Model 3400, 10 inch table saw, new condition.

List: \$234.00.

Firm: \$150.00.

WorkForce 10 inch, compound miter saw, new condition.

List: \$135.00.

Firm: \$60.00.

Took in trade from a Handyman customer for work performed.

Jim The Happy Handyman

jimwtolly@verizon.net

512 694-0321 cell 512 894-0686 office

We now accept VISA & Master card

2015 Officers

President

Jay Littlefield
jay.littlefield@advantest.com
512-917-7316

President Elect

Steven Green
stevenjgreen@mac.com
512-395-7776

Program Chairman

Drew Shelton
dcshelton@gmail.com

Secretary/Newsletter Editor

Hilda Carpenter
512.395-7782
hildac@mac.com

Treasurer

Ed Roberts
512.255.3294
eroberts_ww@austin.rr.com

Membership Chairman

Blair Feller
blair.feller@gmail.com
830-385-2782

Webmaster

Vaden Mohrmann
vmohrmann@gmail.com
512-6587508

Audio/Visual Coordinator

Greg Vest
512-736-2715
sounddudeaustin@gmail.com

First Saturday Coordinator

Len Brissette
512-423-3625
mesquite901@gmail.com

Librarian

Suzi Parker
suziparker@hotmail.com
512-266-0824

CTWA Web Site

www.ctwa.org

Editorial Information

This newsletter is by and for members. The Editor welcomes any written materials and will provide assistance with getting your information into publishable form if you want. DEADLINE IS THE FIRST MONDAY OF THE MONTH. Contact me with your ideas and drafts by phone at 512.395-7782, by E-mail at hildac@mac.com or mail them to:

The Chip Pile

c/o Hilda Carpenter
560 Moss Rose Lane
Driftwood, TX 78619

2015 Calendar

The calendar listings are an attempt to keep you up to date on upcoming CTWA events, as well as other events of particular interest to woodturners. All regular 3rd Tuesday CTWA Meetings are at American Youthworks. Check Website for latest information.

All 1st Saturdays are from 9 am-noon. All meetings are 7 PM to 9 PM

Events & Dates subject to change, watch for emails or website notifications

Nov 17th CTWA Meeting
Jim Brinkman

December 12, Christmas party
Pat & Clyde Little

Jan 9th, 1st Saturday
Site TBD

Jan 19 CTWA Meeting
Johnny Tolly & Jim Spano
Beads of Courage boxes
from flat wood stock

Feb 6th 1st Saturday
Site TBD

Feb 16th CTWA Meeting
demonstrator TBD

Mar 5th 1st Saturday
Site TBD

Mar 15th CTWA Meeting
demonstrator TBD

Apr 2nd 1st Saturday
Site TBD

Apr 19th CTWA Meeting
demonstrator TBD

Let Pat Jenkins know if you would like to present to the club in 2016 or you know someone who would be a great demonstrator for our club. We need presenters.

The Chip Pile

Central Texas Woodturners Association
A chapter of the American Association of Woodturners

Hilda V. Carpenter
560 Moss Rose Lane
Driftwood, TX 78619

To:

Meeting Location

The CTWA meets at American YouthWorks, 1901 East Ben White Boulevard (Texas 71) in south Austin. The building is on the south side of Ben White, just east of Interstate 35. The best entry is off Woodward Street, just south of a little strip center. You enter an alleyway into a lighted parking lot. We will enter through the back door. As you drive in, you will see a truck dock in the back of the building with a big roll-up white door. The entryway is just to the right of the truck dock. Folks coming from the north may want to exit I-35 at Woodward and proceed south on Woodward across Ben White.

