



The Chip Pile



The Newsletter of the Central Texas Woodturners Association

Austin, Texas

A Chapter of the American Association of Woodturners

June 16, 2015

**John Lovelady
Inlaid Features**

7:00 - 9:00 PM

American YouthWorks - Austin, Texas
1901 East SH 71

(about 1/4 mile east of I-35 on south side of SH 71)

**July 11th
1st Saturday**

9 am - 12 pm

Orlando Banos

11321 Oak Branch Dr. 78737

If you need help sharpening tools,
bring them!

President's Shop

Hi All,

Sorry I missed the last meeting, I spent two weeks in Singapore for business meetings. I was there over the weekend and decided to see if I could visit a woodturning club's meeting. So I did a search for it on Google and did not find one club. I did find three furniture makers that did woodturning but they were closed on the weekend. I also found lots of information on clubbing for Singapore nightlife and on woods used in golfing. Google does not seem to be able to limit a search to what you asked for. Singapore is a small Island and I assume wood has to be imported, but was still surprised not to find one club.

I hope you have all signed up for SWAT up in Waco from Aug 21-23.

If not, please hurry. SWAT has a special room rate set up, please check <http://www.swaturners.org/lodging>. I think the rate is good until Aug 5th or whenever all the rooms set aside are filled.

Jimmy Clewes will be our 2015 demonstrator, he will

be teaching us the week before SWAT. Should be a great session.

Also a reminder on the President's challenges

Feb was : Use color in your project

Apr was : Use Mesquite in your project

June is: Texture a surface in your project

Aug : Use spalted wood in your project

Oct : Bring in something that is not what it seems for a project

Nov : Bring in a Christmas Ornament for a project

Remember I will ask for three people to judge each challenge and give the top two winners a prize!

Hope you all did not get impacted by the terrible floods we had a few weeks ago.

God Bless

Jay Littlefield

Monthly Features

Bring Back Raffle, p. 7

Business Meeting, p. 4

Calendar, p. 8

Classified Ads, p. 8

Editor's "Turn", p. 3

Feature Presenter, p. 2

First Saturday, p. 7

Instant Gallery, p. 5-6

Map, p. 9

Membership Information, p. 8

Members in the News, p. 7

Officers, p. 8

Photo Credits, p. 7

President's Shop, p. 1

President's Challenge, p.

Upcoming Demo's./Classes p. 4

Volunteer your Shop, p. 4

Volunteer Instructors, p. 3

EXTRA:

Badges, p. 7

Beads of Courage, p. 3

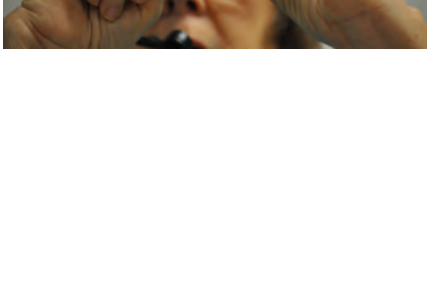
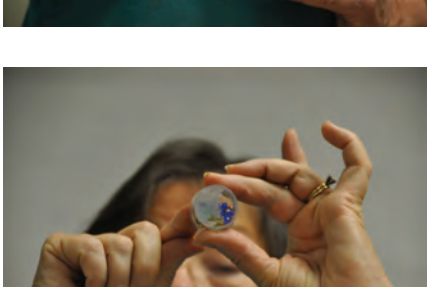
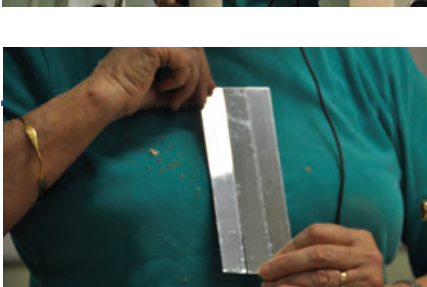
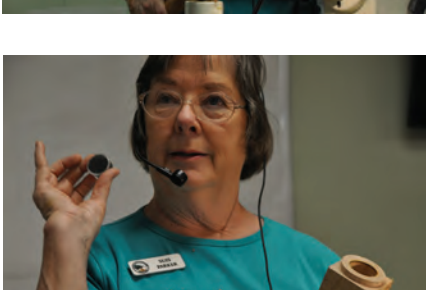
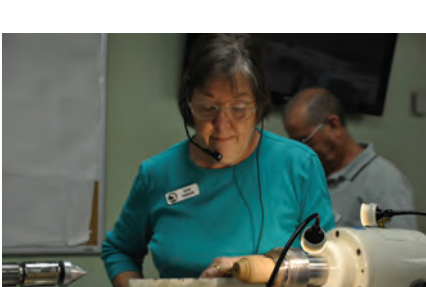
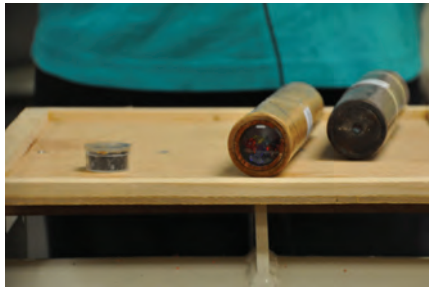
President's Challenge, p. 1, 3

SWAT, p. 3

The American Association of Woodturners is "Dedicated to Providing Education, Information and Organization to Those Interested in Woodturning." In keeping with the standards of our National Organization, the Central Texas Woodturners Association hereby gives permission for all other woodturning chapters, organizations, magazines and newspapers to use any materials contained herein for the benefit of all woodturners everywhere. We ask that credit be given for the source of the material.

April Demonstration
John & Suzi Parker
Kaleidoscopes

John and Suzi Parker demonstrated techniques to turn a kaleidoscope. CTWA appreciates this tag-team couple's efforts to show how to make great Christmas gifts.



Editor's "Turn"

What do you do with a drunken sailor? What do you do with a drunken sailor? What do you do with a drunken sailor; earliah in the mornin'.

Throw him in the bed with the captain's daughter.

Throw him in the bed with the captain's daughter.

Throw him in the bed with the captain's daughter.

Earliah in the mornin'.

For some reason this song was running through my head while turning recently. I found myself humming it loudly over my lathe.

Has that ever happened to you, not the sailor song, but any song? I must have had a memory reminding me of how I used to sing this song to my kids when they were little. They loved my horrible pirate's accent and antics.

I stopped the lathe and took stock of my body and mind. Hmm, tense shoulders, tired feet, and my face mask was incredibly dirty.

I'm a bit like a butterfly, my attention often switches quickly. But when I turn, I'm concentrating so hard, I forget some of the basic rules of woodturning.

For example, never turn when you are tired. You tend to make stupid mistakes and wood goes flying a million miles an hour toward your face!

Another example, don't hold your tool so tight that your knuckles turn white. This is a sure bet that you are not relaxed—at all.

Woodturning should be relaxing and fun.

So, what did I figure out from this silly pirate's song? Well, I was repeat-

ing the song as a way to maintain my concentration. A weird form of obsessive compulsive disorder (?).

When I stepped away from the lathe and took stock of my body and mind, I realized I had no business at the lathe right then.

It's sort of like those warnings on medicine that say, "Do not operate equipment while taking this drug."

If I'm tense, I make mistakes. If I concentrate on being relaxed and watching my ABC's approach, bevel, cut (I think that's what it stands for) then my turning goes well.

If I have to sing a stupid song over and over and over to keep my concentration, I need to realize my brain is sending the signal, "Do not operate equipment while your brain is in this state."

If you have similar experiences of checking how you are mentally and bodily, I'd love to hear them.

Woodturning is a wonderful, and dangerous hobby. Anything we can do to make it safer, we need to.

Earliah in the mornin'...

Keep turnin' it on, safely,
Hilda Carpenter
Editor

President's Challenge

Texture Surface
Judging: June

Use Spalted Wood
Judging August
Meeting

August 21-23 SWAT
<http://www.swaturners.org>
Have you made your
Beads of Courage
bowl?

Volunteer Instructors

SOUTH

Stacey Hager 512.282.1036
basics, spindles, sharpening, hollow vessels

Johnny Tolly 512.858.4471
basics, open segmented

Jimmy Tolly 512.894.0686
basics, platters

Craig Timmerman 512.288.3598
basics, square turning, hollow vessels

Charlie Kay ckayda@gmail.com
boxes & bottle stoppers
512.636.3492

H. O. Evans 512.282.2830
segmented turnings

Hilda Carpenter 512-395-7782
Airbrushing, tool handles, bowls,
Drozda finials, sea urchin ornaments, bottlestoppers

Jack Besperka 512.261.4682
decoration & finishing

NORTH

Jim Spano 512.835.5023
novelty items, tops, shop gadgets

Len Brissette 512.258.4004
bowls, platters, sharpening

ROUND ROCK/ GEORGETOWN

Ed Roberts 512.255.3294
basics platters

Drew Shelton 512-863-4651

LOCKHART/SAN MARCOS

David Dick 512.357.6517
basics, spindles, architectural

Business Meeting

There were 37 attendees at our May 19, 2015 meeting, including visitor **Jose Martinez**. President-Elect **Steven Green** presided.

SWAT Representative **Pat Little** reported on SouthWest Association of Turners (SWAT) symposium plans and encouraged folks to get their registration fee in and make their hotel reservations. The event will be in Waco, August 21 - 23. We ask for volunteers to help set up on the 20th. In the Saturday night drawing, among the items will be two Jet 12-21 midi-lathes and a full sized Vicmarc lathe. As usual, CTWA will sponsor one room and bear the brunt of the responsibility for set-up. Volunteers are needed for set-up, room hosts, audio visual operations, and to sell tickets for the drawing. Sign-up sheets will be circulated at the June meeting.

Program Chairman **Drew Shelton** reported that **Jimmy Clewes** will be our featured guest demonstrator/instructor this year. The demonstration will be held on Sunday, August 16, at American YouthWorks, and will constitute our August regular meeting. Classes will be on the following Monday, Tuesday, and Wednesday, in the **Littles'** shop. Details to follow. Drew also made a plea for demonstrators for the September and November meetings.

Treasurer **Ed Roberts** reported that our current treasury balance is \$11,400.

Membership Chairman **Blair Feller** reported that we have 102 paid members for 2015, including six new members. Twenty-four members from 2014 still have not paid their dues for 2015. Blair also instructed folks on how to get a name badge if they have yet to get one.

Johnny Tolly reported that the pen turning event for graduating American YouthWorks seniors will be held on

Keeping Austin Turning Since 1988

Thursday, June 4, from 8:30 AM to 1:00 PM. Turners are needed. A sign-up sheet was circulated. Johnny also made a pitch for **Beads of Courage** boxes to be displayed in the Instant Gallery at SWAT before they are taken to Dell Children's Hospital. Several folks commented on a little dog that Jim Spano placed in his box last year. After some discussion, it was VOTED to have Jim buy a supply of those dogs for the club, to be included in the boxes when they go to the hospital.

Charlie Kay

Upcoming Demo's & Classes

June: **John Lovelady**, Inlaid features

July: **Craig Timmerman**

August 2015 Classes & Demonstration: **Jimmy Clewes, Sunday August 16th** (meeting is on Sunday, August 16th instead of Tuesday the 18th)

Jimmy Clewes Classes Monday—Wednesday 8/17 - 8/19

September: **Eric Peterson**

October: **Dwight Schaeper**

November: **Jim Brinkman**

Volunteer Your Shop for First Saturday!

1. It doesn't need to be fancy, or big.
2. We'll bring the lathes.
3. You make the coffee.
4. Drew Shelton brings the donuts and asks for a contributions for all the folks who show up to offset his costs.
5. Have enough room for at least 1-2 turners (easy in the summer).
6. Let Len Brissette lbrissette@austin.rr.com know! Or email the editor.

Confirmed 1st Saturday Sites:

July 11*: Orlando Banos

Aug: Chris Van Peski

Sept 12*: Erik Peterson

Oct: Drew Shelton

Nov: Stacey Hager

Dec: Clyde Little (Christmas Party)

* Moved a week later due to holiday weekend.

Remember!!

Keep Making Beads of Courage Boxes!!
If you don't make it,
a kid won't get it.

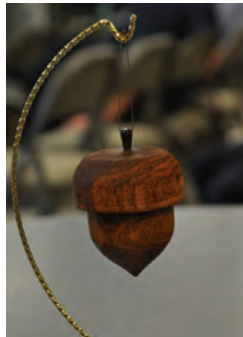
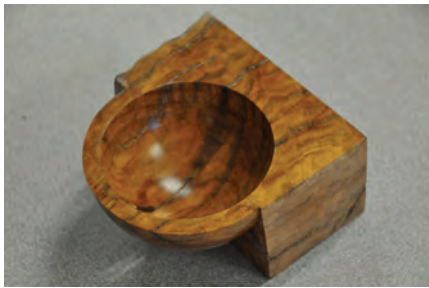
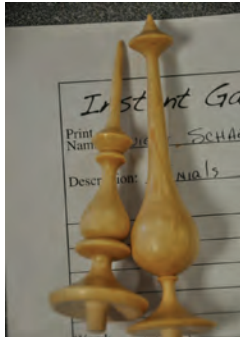
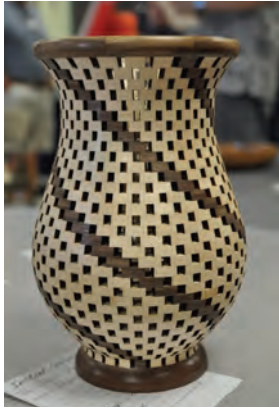
May Gallery

Thanks to all the following contributions to the gallery:

- Nowt Peterson:** Domino bowl;
Turquoise Rock bowl
- Marcia Tolly:** Beads of Courage
- Johnny Tolly:** Beads of Courage
- Cortland Hunt:** Spalted sycamore;
Cedar ash; Mesquite
- Dwight Schaeper:** Poplar bowl; Bottle
stopper; Spin top; Finials
- John Lovelady:** Brazilian peppertree
(2); Ash pot
- Randy Brewer:** Spanish oak vase;
Mesquite hollow form; Osage orange
vase; Cedar stump; Cherry vase
- Jim Spano:** Sea urchin and cocobolo;
Emerging bowl-maple burl; Natural-
edge lingustrum hollow vessel
- Chris Van Peski:** Segmented vase (2)



May Gallery



Bring Back Raffle



Suzi Parker: Charlie Kay
Unk: Dwight Schaeper (tool set)

REMEMBER TO RETURN THE FAVOR, if you won—bring back your turning for next month's raffle!!

Badges?

“Badges? We don’t need no stinkin’ badges!”

This iconic line was first coined in B. Traven’s novel *The Treasure of the Sierra Madre* (1927) and made famous in Mel Brooks’ movie *Blazing Saddles* (1974). This line has been quoted and misquoted in dozens of movies, television programs and cartoons. It means that we don’t need a symbol, like a badge, to be recognized.

At CTWA, however, a badge is a way to identify each other and greet one another by name. Let’s face it, not all of us have photographic memories for names and faces. I know I don’t and I need that “stinking badge” to put the two together. So, if you haven’t purchased a CTWA member badge, please do so, so that I don’t have to scratch my head trying to remember your name or call you by the wrong one.

At our next CTWA meeting, look for our Membership Chair, Blair Feller and order your CTWA member badge (\$5.00).

Steve Green

1st Saturday

Jim Brinkman hosted June’s first Saturday.



Members In the News

Steven Green had a great show at the Kerville Festival of the Arts May 23-24. Getting home was a different matter due to the Blanco River floods. He encourages other artists to apply to this show next year, even with Saturday’s rain, people attended the festivities, and the show sponsors took great care of the artists.

If you are participating in an art show, or demonstrating for another club or symposia please let the editor know so she can include your events in the Newsletter.

Photos

Photographs for this month’s **Chip Pile** were provided by **Drew Shelton** If you have digital photos that you would like to have considered for use in the newsletter. Send them to the Editor at hildac@mac.com.

Membership in CTWA

We welcome NEW MEMBERS to join our band of merry turners anytime. An interest in woodturning is the only requirement. Dues are \$35.00 per year, prorated to \$3.00/month for new members. \$45 Family.

With our membership, whether you are experienced or a novice, we will teach you, or learn from you, and build long-lasting friendships based on a common kinship of matching wood, metal, machine and man, or woman as the case may be.

CTWA members are also encouraged to join the American Association of Woodturners, AAW. AAW dues are: General (\$55); Family (\$60) includes up to three family members living in same household on the membership card. Youth, under 19 years of age (\$24) Online (\$45 per year) Online members do not receive printed versions of the American Woodturner journal and the "Resource Directory," available through online access. Artist (\$81) business insurance.

For full details and membership form visit the AAW site at woodturner.org.

Classified Ads

Skillsaw Model 3400, 10 inch table saw, new condition.
List: \$234.00.
Firm: \$150.00.

WorkForce 10 inch, compound miter saw, new condition.
List: \$135.00.
Firm: \$60.00.

Took in trade from a Handyman customer for work performed.

Jim The Happy Handyman
jimwtolly@verizon.net
512 694-0321 cell 512 894-0686 office
We now accept VISA & Master card

2015 Officers

President

Jay Littlefield
jay.littlefield@advantest.com
512-917-7316

President Elect

Steven Green
stevenjgreen@mac.com
512-395-7776

Program Chairman

Drew Shelton
dcselton@gmail.com

Secretary/Newsletter Editor

Hilda Carpenter
512.395-7782
hildac@mac.com

Treasurer

Ed Roberts
512.255.3294
eroberts_ww@austin.rr.com

Membership Chairman

Blair Feller
blair.feller@gmail.com
830-385-2782

Webmaster

Vaden Mohrmann
vmohrmann@gmail.com
512-6587508

Audio/Visual Coordinator

Greg Vest
512-736-2715
sounddudeaustin@gmail.com

First Saturday Coordinator

Len Brissette
512-423-3625
mesquite@austin.rr.com

Librarian

Suzi Parker
suziparker@hotmail.com
512-266-0824

CTWA Web Site
www.ctwa.org

Editorial Information

This newsletter is by and for members. The Editor welcomes any written materials and will provide assistance with getting your information into publishable form if you want. DEADLINE IS THE FIRST MONDAY OF THE MONTH. Contact me with your ideas and drafts by phone at 512.395-7782, by E-mail at hildac@mac.com or mail them to:

The Chip Pile
c/o Hilda Carpenter
560 Moss Rose Lane
Driftwood, TX 78619

2015 Calendar

The calendar listings are an attempt to keep you up to date on upcoming CTWA events, as well as other events of particular interest to woodturners. All regular 3rd Tuesday CTWA Meetings are at American Youthworks. Check Website for latest information.

All 1st Saturdays are from 9 am-noon. All meetings are 7 PM to 9 PM

Events & Dates subject to change, watch for emails or website notifications

June 16, CTWA Meeting
John Lovelady, Inlaid techniques

June 25-28 AAW Symposium
Early bird registration May 22, 2015

July 11th 1st Saturday
Orlando Banos

July 21, CTWA Meeting
Craig Timmerman

Aug 1 1st Saturday
Chris Van Peski

August 15, CTWA Mtg
Jimmy Clews Demo

August 16-19th Clews Class

August 21-23 SWAT, Waco

Sept 12 1st Saturday
Erik Peterson

Oct 3 1st Saturday
Drew Shelton

Nov 7 1st Saturday
Stacey Hager

Let Drew Shelton know if you would like to present to the club in 2015 or you know someone who would be a great demonstrator for our club. We need presenters.

The Chip Pile

Central Texas Woodturners Association
A chapter of the American Association of Woodturners

Hilda V. Carpenter
560 Moss Rose Lane
Driftwood, TX 78619

To:

Meeting Location

The CTWA meets at American YouthWorks, 1901 East Ben White Boulevard (Texas 71) in south Austin. The building is on the south side of Ben White, just east of Interstate 35. The best entry is off Woodward Street, just south of a little strip center. You enter an alleyway into a lighted parking lot. We will enter through the back door. As you drive in, you will see a truck dock in the back of the building with a big roll-up white door. The entryway is just to the right of the truck dock. Folks coming from the north may want to exit I-35 at Woodward and proceed south on Woodward across Ben White.

