



The Chip Pile



The Newsletter of the Central Texas Woodturners Association

Austin, Texas

A Chapter of the American Association of Woodturners

April 21, 2015 Meeting

Hilda Carpenter

Tips for Drozda Finials

7:00 - 9:00 PM

American YouthWorks - Austin, Texas

1901 East SH 71

(about 1/4 mile east of I-35 on south side of SH 71)

May 2nd 1st Saturday

9 am - 12 pm

Craig Timmerman

512-288-3598

If you need help sharpening tools, bring them!

President's Shop

Well April is here and I hope not too many of you fell for an April fools joke.

Hopefully everybody except **Jimmy Tolly** and **Johnny Tolly** (Johnny said he had already finished) is working on the April's Presidents challenge, the challenge is to use Mesquite in your project. We will have three judges and the top two winners will get a prize.

Thanks to **Johnny Tolly** for his presentation on D-Way tools and showing us his Acorn Christmas ornament. Our demonstrator this month is **Hilda Carpenter** showing tips for how to make **Cindy Drozda** Finials. I learned

a lot in Cindy's class and look forward to seeing Hilda turning finials.

The club is looking to train some back up camera operators for the months that **Greg Vest** is not available. Also would be good to have stand by camera operators for SWAT to give Greg some rest and the ability to see some demonstrations himself. If you are interested please talk to Greg or **Jim Spano**.

Please remember that SWAT registration opened on March 15. SWAT will be August 21-23 in Waco.

Jimmy Clewes will be our 2015 demonstrator, looks like he is available the week before SWAT. More info to come

Since so many people said they would attend the Sunday's **Jimmy Clewes** demo, we are considering moving our regular August meeting to Sunday the 16th during the demo, instead of Tuesday the 18th. The meeting would be shortened so that it did not interfere with the demo. Please let me know what you think about this.

Our beginning/novice wood turning class will be on April 18-19 at **Clyde Little's** shop. Also there will be a sharpening class on April 11th also at the Little's shop. Please let **Jim Spano** or **Clyde Little** know if you are interested in attending.

God bless,
Jay Littlefield

April President's Challenge:

Mesquite In A Turning

Monthly Features

- Bring Back Raffle, p. 5
- Business Meeting, p. 4
- Calendar, p. 7
- Classified Ads, p. 7
- Editor's "Turn", p. 3
- Feature Presenter, p. 2
- First Saturday, p. 6
- Instant Gallery, p. 5
- Map, p. 8
- Membership Information, p. 7
- Member's in the News, p. 4
- Officers, p. 7
- Photo Credits, p. 4
- President's Shop, p. 1
- President's Challenge, p. 1
- Upcoming Demo's./Classes p. 4
- Volunteer your Shop, p. 4
- Volunteer Instructors, p. 3

EXTRA:

- Beads of Courage, p. 4
- SWAT Registration, p. 3

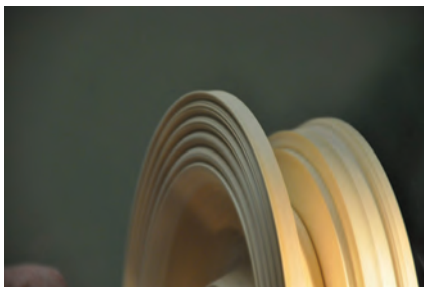
The American Association of Woodturners is "Dedicated to Providing Education, Information and Organization to Those Interested in Woodturning." In keeping with the standards of our National Organization, the Central Texas Woodturners Association hereby gives permission for all other woodturning chapters, organizations, magazines and newspapers to use any materials contained herein for the benefit of all woodturners everywhere. We ask that credit be given for the source of the material.

February Demonstration

Johnny Tolly D-Way Tools

Johnny Tolly demonstrated the new D-Way tools—a marvelous way to make beads. First, Johnny demonstrated making beads on the edge of a platter or bowl. Then he showed a different application of applying beads to a spindle, making a bird house, topped with an oak cap. As always, Johnny included information on safety.

CTWA appreciates Johnny's skill at turning and demonstrating.



Vendor information:

www.d-waytools.com
360-432-9509

1/16", 3/8" beading tools

1/8", 3/16", 1/4" beading tools

Diamond teardrop tool

Tool handles:
5/8" or 1/2" or 3/8"
Lengths: 16" 12" or 8"

For best results use with hardwoods

Sanding supplies: Vince Welch

Dixie Tool: Pin Vise 60-80 indexes

Miesel Hardware: eye screws

Craft Supply: Maexter Drill Chuck

Editor's "Turn"

I've been pondering how hard it must have been for woodturners to start out before they had the internet, specifically, YouTube. Have you ever "NOT" found what you were looking for. I mean some instructional video on how to use a specific tool, or make a particular project? Whenever I am looking for new ideas, I'll enter "woodturning" into the YouTube search and wander around the plethora of options to view. Now, I have to admit, some of them I only watch for a second, then turn it off. If they start their demonstration with "It's a beautiful day ..." or if they have a terrible accent that sounds like they just got back from deliverance country, I'm out. Of course I can't get the dueling banjo song out of my head for hours after I have heard them.

Then again, the really great demonstrators are easy to watch, manage not to say uhhhh and can enunciate their words clearly, I'm in. Good video production seems to be part of my requirement, too. I mean how hard can it be to at least have a neighbor come over and hit the stop or start button?

I guess I'm picky. I posted this similar opinion on Facebook recently. One of the group members wrote back, "I guess I bug you." Well, I ignored that temptation to say, "yeah, you do." Bless his heart (as my grandmother used to say).

Although I never tire of watching really good demonstrators that are professional. Recently I found a new finishing product from watching **Cindy Drozda's** tool-handle making video.

I spent quite some time out in the shop this month and accomplished quite a bit. I decided to combine two efforts into one product, making a sea urchin finial using Mesquite. Then, I got cocky and decided to see how long and how thin I could make the darn thing. Well, it's not perfect, and then I decided that the icicle would make

a better finial, because it was so darn long!

The next dilemma was to decide what to do about the base. I decided to use a Fibonacci guide to determine the size of the base. I carefully calculated the base to be in proportion to the finial and the urchin combined.

Oh dear, what can I say but the base looked ridiculous. I giggled as I thought about going ahead and using it, then thought better of my idea by asking Steve what he thought. Yeah, I redid the base to be in proportion with the finial (excluding the urchin) and a lot, I mean a lot smaller. The finished product takes a bit to get used to looking at, but all in all it's not scrap.

I used Dr. Kirk's Scratch Free Woodturning polish, then finished it up with a nice shellac finish. If you haven't used the Dr. Kirk's polish, you may want to give it a try. It's available on several online stores, like Craft Supplies. If I were to guess what Kirk's ingredients are, I'd guess beeswax and mineral oil (similar to what **Eli Avisera** uses—he mixes his own), and it sure does the trick.

I was really excited when **Charlie Kay** asked me to demonstrate at the upcoming Buda Fine Arts show this weekend. Steve gave me time off from his show to go play! I can't wait!

I hope your month has been as productive and you've had half as much fun as I had!

Keep turnin' it on,
Hilda Carpenter
Editor

August 21-23 SWAT
Register Early Now
<http://www.swaturners.org>

To Do Checklist:

- _____ 1. Register online
- _____ 2. Reserve discount room price
- _____ 3. Make beads of courage boxes

Volunteer Instructors

SOUTH

Stacey Hager 512.282.1036
basics, spindles, sharpening, hollow vessels

Johnny Tolly 512.858.4471
basics, open segmented

Jimmy Tolly 512.894.0686
basics, platters

Craig Timmerman 512.288.3598
basics, square turning, hollow vessels

Charlie Kay ckayda@gmail.com
boxes & bottle stoppers
512.636.3492

H. O. Evans 512.282.2830
segmented turnings

Hilda Carpenter 512-395-7782
Airbrushing, tool handles, bowls,
Drozda finials, sea urchin ornaments, bottlestoppers

Jack Besperka 512.261.4682
decoration & finishing

NORTH

Jim Spano 512.835.5023
novelty items, tops, shop gadgets

Len Brisette 512.258.4004
bowls, platters, sharpening

ROUND ROCK/ GEORGETOWN

Ed Roberts 512.255.3294
basics platters

Drew Shelton 512-863-4651

LOCKHART/SAN MARCOS

David Dick 512.357.6517
basics, spindles, architectural

Business Meeting

Jay Littlefield opened the meeting by introducing visitor: **Bob Lanford**. Jay said there were 35 turners at **Chris Van Peski's** shop for first Saturday. Atkins Jr. High is looking for help to turn bats for their students. Someone also wanted a turner to help with a Yarn Spinning wheel. If you are interested in helping out, please contact Jay.

Jimmy Clews' workshop will be before SWAT. We will have 3 one-day classes with a demonstration for all members the Sunday August 16 at Clyde Little's shop. Jimmy's demo falls so close to our regular monthly meeting time & SWAT, we will use a small portion of Jimmy's demonstration time as our regular meeting rather than Tuesday.

The April president's challenge is to use Mesquite in your turning.

Len Brissett has the glue and saw-blades available for those who ordered them with Jim Brinkman.

Drew Shelton is looking for volunteers to demonstrate in July, August, October and November.

Those turners attending the Beginner Woodturning Class April 18-19 at **Clyde Little's** workshop. Please bring your tools to be sharpened at first Saturday, April 11th at Clyde's shop, so the instructors can dedicate their time for your learning the next weekend.

Suzi Parker announced the 2014 SWAT demonstrations are now in the CTWA library.

Pat Little announced the results from the 2014 audit and thanked **Ed Roberts** for continuing to do such a great job as treasurer for the club.

After the instant gallery, Jay turned the meeting over to Johnny's demonstration. There were 69 people in atten-

Keeping Austin Turning Since 1988 dance. It was good to see past-president **Gene Stokes** back at the meeting.

Upcoming Demo's & Classes

April: **Hilda Carpenter**, Tips & short-cuts on Drozda finials

May: **John & Suzi Parker**, Kaleidoscopes

June: **John Lovelady**, Inlaid features

July: **Craig Timmerman**

April 18-19 Beginner's class

August 2015 Classes & Demonstration: **Jimmy Clews**

September: **Eric Peterson**

Needed: Demonstrators for July, October and November

Members In the News

Steve Green will participate in the Wimberley Blue Hole Art show April 18-19, then the Artwalk in Lafayette on May 2-3 and finally the Kerville Art festival May 23-24.

Charlie Kay, will be at the Buda Fine Art Festival April 18-19. **Hilda Carpenter, Stephen Van Gee and Jim McKinney** will be demonstrating with Charlie.

Craig Timmerman will be participating in the West Austin Studio tour on May 9 and 10 and also on May 16 and 17. For more information about the West Austin Studio tour you can visit west.bigmedium.org

Craig will be a guest artist at **Shawn Graham's Wortheffort** woodworking school, 937 Reinli St. Suite 29. Shawn will have some of Craig's latest work on display and Shawn plans on demonstrating woodturning. There will

also be a couple of other woodworkers in attendance.

If you are participating in an art show, or demonstrating for another club or symposia please let the editor know so she can include your events in the Newsletter.

Photos

Photographs for this month's **Chip Pile** were provided by **Drew Shelton & Al Gaskill** If you have digital photos that you would like to have considered for use in the newsletter. Send them to the Editor at ildac@mac.com.

Volunteer Your Shop for First Saturday!

1. It doesn't need to be fancy, or big.
2. We'll bring the lathes.
3. You make the coffee.
4. Drew Shelton brings the donuts and asks for a contributions for all the folks who show up to offset his costs.
5. Have enough room for at least 1-2 turners (easy in the summer).
6. Let Len Brissette lbrissette@austin.rr.com know! Or email the editor.

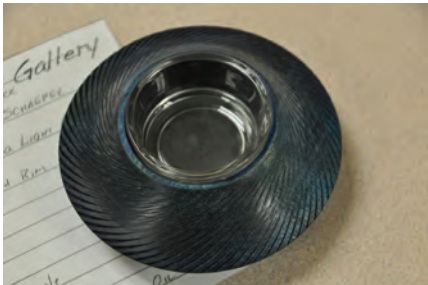
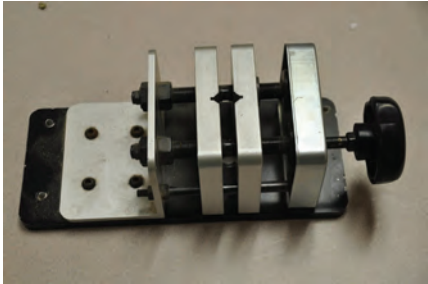
Remember!!

Keep Making Beads of Courage Boxes!!
If you don't make it, a kid won't get it.

March Gallery

Thanks to all the following contributions to the gallery:

- Nowt Peterson: 2 segmented turnings
- Jack Besperka: beaded vase
- Dinah van Peski: assorted pens
- Larry Robinson: tippy tops & walnut bowl
- Vic Johnson: spalted mahogany vase, spalted mahogany thermal cup
- Dwight Schaeper: textured rim maple bowl



Bring Back Raffle

Turner: Winner

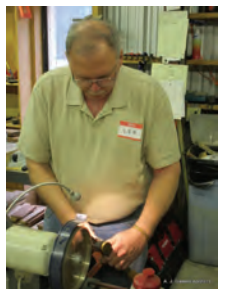
- Dwight Schaeper: Fred Zumwalt
- Dwight Schaeper: Suzi Parker
- Johnny Tolly: Joe Kirk (Hunter hook tool)
- Johnny Tolly: Suzi Parker
- Johnny Tolly: Stacey Hager (Vince's sanding kit)
- Pin Vise Tool: Orlando Bloom

REMEMBER TO RETURN THE FAVOR, if you won—bring back your turning for next month's raffle!!



1st Saturday

Keeping Austin Turning Since 1988



Clyde Little hosted 1st Saturday

Membership in CTWA

We welcome NEW MEMBERS to join our band of merry turners any-time. An interest in woodturning is the only requirement. Dues are \$35.00 per year, prorated to \$3.00/month for new members.

With our membership, whether you are experienced or a novice, we will teach you, or learn from you, and build long-lasting friendships based on a common kinship of matching wood, metal, machine and man, or woman as the case may be.

CTWA members are also encouraged to join the American Association of Woodturners, AAW. AAW dues are:
General (\$55); Family (\$60) includes up to three family members living in same household on the membership card.
Youth, under 19 years of age (\$24)
Online (\$45 per year)
Online members do not receive printed versions of the American Woodturner journal and the "Resource Directory," available through online access.
Artist (\$81) business insurance.

For full details and membership form visit the AAW site at woodturner.org.

Classified Ads

None

2015 Officers

President

Jay Littlefield
jay.littlefield@advantest.com
512-917-7316

President Elect

Steven Green
stevenjgreen@mac.com
512-395-7776

Program Chairman

Open

Secretary/Newsletter Editor

Hilda Carpenter
512.395-7782
hildac@mac.com

Treasurer

Ed Roberts
512.255.3294
eroberts_ww@austin.rr.com

Membership Chairman

Blair Feller
blair.feller@gmail.com
830-385-2782

Webmaster

Vaden Mohrmann
vmohrmann@gmail.com
512-6587508

Audio/Visual Coordinator

Greg Vest
512-736-2715
sounddudeaustin@gmail.com

First Saturday Coordinator

Len Brissette
512-423-3625
mesquite@austin.rr.com

Librarian

Suzi Parker
suziparker@hotmail.com
512-266-0824

CTWA Web Site

www.ctwa.org

Editorial Information

This newsletter is by and for members. The Editor welcomes any written materials and will provide assistance with getting your information into publishable form if you want. **DEADLINE IS THE FIRST MONDAY OF THE MONTH.** Contact me with your ideas and drafts by phone at 512.395-7782, by E-mail at hildac@mac.com or mail them to:

The Chip Pile
c/o Hilda Carpenter
560 Moss Rose Lane
Driftwood, TX 78619

2015 Calendar

The calendar listings are an attempt to keep you up to date on upcoming CTWA events, as well as other events of particular interest to woodturners. All regular 3rd Tuesday CTWA Meetings are at American Youthworks. Check Website for latest information.

All 1st Saturdays are from 9 am-noon. All meetings are 7 PM to 9 PM

Events & Dates subject to change, watch for emails or website notifications

April 18-19 Beginner's Class
Clyde Little's Shop

April 21 CTWA Meeting
Demo: Hilda Carpenter
Tips for Drozda finials
President's Challenge
Due

May 2 1st Saturday
Place: Craig Timmerman

May 19, CTWA Meeting
John & Suzi Parker
Kaleidoscopes

June 6th 1st Saturday
Place: TBD

June 16, CTWA Meeting
John Lovelady, Inlaid
techniques

June 25-28 AAW Symposium
Early bird registration
May 22, 2015

July 11, CTWA Meeting
Craig Timmerman

August 21-23 SWAT, Waco

Let Drew Shelton know if you would like to present to the club in 2015 or you know someone who would be a great demonstrator for our club. We need presenters.

The Chip Pile

Central Texas Woodturners Association
A chapter of the American Association of Woodturners

Hilda V. Carpenter
560 Moss Rose Lane
Driftwood, TX 78619

To:

Meeting Location

The CTWA meets at American YouthWorks, 1901 East Ben White Boulevard (Texas 71) in south Austin. The building is on the south side of Ben White, just east of Interstate 35. The best entry is off Woodward Street, just south of a little strip center. You enter an alleyway into a lighted parking lot. We will enter through the back door. As you drive in, you will see a truck dock in the back of the building with a big roll-up white door. The entryway is just to the right of the truck dock. Folks coming from the north may want to exit I-35 at Woodward and proceed south on Woodward across Ben White.

