



The Chip Pile

The Newsletter of the Central Texas Woodturners Association

Austin, Texas

A Chapter of the American Association of Woodturners

November 18, 2014 Meeting Tips & Tricks Panel

7:00 - 9:00 PM

American YouthWorks - Austin, Texas

1901 East SH 71

(about 1/4 mile east of I-35 on south side of SH 71)

Dec. 13 First Saturday

9 am - 12 pm

Location: Pat & Clyde Little

512-423-0508

If you need help sharpening tools,
bring them!

President's Shop

I'm sitting on the stern of the ship with the moonlight glistening on the water. You can tell I'm thinking of turning my next project as the wine flows freely.

I hope each of you have not been bothered by the goblins and your month has been productive. I assume the auction went smoothly and it was a huge success for American Youth Works.

Please get started on your Christmas present turning. The CTWA Christmas party will be the 2nd Saturday, December 13 at our home. We start the day around 9 am with a first-saturday coffee in Clyde's shop. Then we have a wonderful lunch together in the house. After lunch, we all exchange a turning that we bring. Remember, even if you

don't think you are a good turner, just bring your best effort! You do not have to participate in the exchange to attend the workshop or dinner. I hope everyone will plan to attend. It is always a lot of fun for you and your kids.

I will be passing around a sign up sheet at the November meeting for volunteers to prepare a dish to share with us at our Christmas dinner.

I hope each of you enjoyed the ghosts and goblins and keep on turning.

Pat Little, President, CTWA

Volunteer Your Shop for First Saturday!

1. It doesn't need to be fancy, or big.
2. We'll bring the lathes.
3. You make the coffee.
4. Drew Shelton brings the donuts and asks for contributions for all the folks who show up to offset his costs.
5. Have enough room for at least 1-2 turners (easy in the summer).
6. Let Len Brissette lbrissette@austin.rr.com know! Or email the editor.

Monthly Features

- Bring Back Raffle, p. 7
- Business Meeting, p. 4
- Calendar, p. 9
- Classified Ads, p. 9
- Editor's "Turn", p. 3
- Feature Presenter, p. 2
- First Saturday, p. 8
- Instant Gallery, p. 5-7
- Map, p. 12
- Membership Information, p. 9
- Member's in the News, p. 4
- Officers, p. 9
- Photo Credits, p. 4
- President's Shop, p. 1
- Upcoming Demo's./Classes p. 4
- Volunteer your Shop, p. 1
- Volunteer Instructors, p. 3
- EXTRA:
- Christmas Party! p. 4
- Woodcraft is moving, p. 3

The American Association of Woodturners is "Dedicated to Providing Education, Information and Organization to Those Interested in Woodturning." In keeping with the standards of our National Organization, the Central Texas Woodturners Association hereby gives permission for all other woodturning chapters, organizations, magazines and newspapers to use any materials contained herein for the benefit of all woodturners everywhere. We ask that credit be given for the source of the material.

October Demonstration

Charlie Kay Turning a Mystery Salt Shaker

Charlie Kay's demonstrations are always a lot of fun. This month he showed us how to turn a mystery salt shaker. He varied his production meth-



od from Nick Cook's turning a saltturn. I like the name "mystery salt shaker" better because it takes you a minute to understand that the salt won't pour out all over the table!

Charlie provided a list of tools needed to complete the project: drive center and live center; Morse taper chuck; Forstner bits 1 5/8" and 1 3/8"; scroll chuck; spindle roughing gouge; 3/8" or 1/2" spindle gouge; and a parting tool.

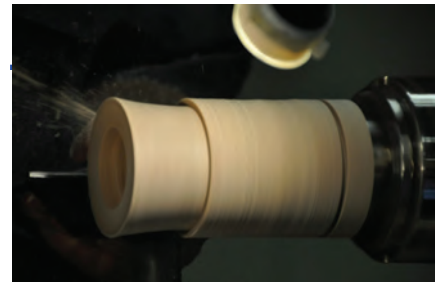
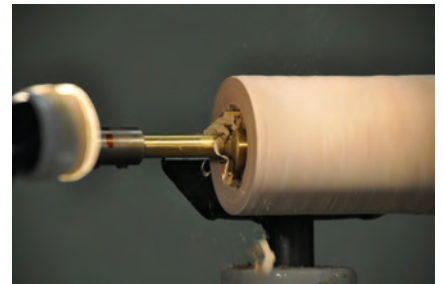
To turn the box rough a cylinder between centers and turn a tenon on one end. This end will be the top of of the finished peace (look at the wood to see what side looks best for the top). Mount the blank in the chuck, then true the end with a spindle gouge. Mount the drill chuck in the tail stock and drill a 1 5/8" hole 1/4 to 5/16" deep. Change bit and drill a 1 3/8" hole 3 inches deeper than the bottom of the 1 5/8" hole.

Shape the exterior of the box with a spindle gouge and part it from the waste, being sure to leave enough room above the top of the hole to nicely finish the top. Mount the box using the hole in the bottom, using a waste block mandrel or your smaller jaws in expansion and finish turning the top of the box.

Keeping Austin Turning Since 1988

To turn the funnel, place another blank between centers and rough to a cylinder and turn a tenon on one end. Mount the blank in the chuck and true the end with your spindle gouge. Using your parting too, turn a 1 5/8 x 1/4" tenon on the bottom. The sides of this tenon must be perpendicular to the bottom. You can line them up with the bed way to insure they are straight. Test fit in the bottom of the box. It should fit snugly and be slightly recessed. Turn a second tenon immediately adjacent to the 1 5/8" tenon, slightly smaller than the 1 3/8" and ~1/8" wide. Use your spindle gouge to turn a funnel shaped recess in the bottom of the 1 5/8" tenon. Mount the drill chuck with a 1/8" twist bit and drill a 2" deep hole in the center of the funnel. Starting at the top of the 1 3/8" tenon, use your spindle gouge to taper the center section of the blank down to 1/2" the stem of your funnel. Measure up from the step tenon 2" and part the piece off from the waste. Fit the funnel into the box and glue into place. Apply your favorite finish and fill the box with salt.

CTWA thanks Charlie for a great demonstration!



Editor's "Turn"

I appreciate all of you who won't complain that I got the Chip Pile out on the Tuesday before the meeting!

Honestly, I had a terrific vacation in California, with some interesting twists. My daughter is getting married next September, so she asked me to come out to help her try on wedding dresses.

Oh ... my ... goodness ... my previous experience in having children go through their nuptials in no way prepared me for the wedding dress selection process. I mean what can I say? I had no idea that the same dress came in fifteen million versions.

It's a dress, right? It will be worn once, right? It costs at least \$1,000!!! Holy moly and those are the "stock" dresses. Whatever that means.

I'd rather be in Woodcraft any day.

Of course, I couldn't really blame her since I had absolutely no point of reference for this process. My mother made my wedding dress from a Simplicity pattern in 1972. What the heck did I know? I think material and all, it probably cost \$25.99. Alas, comparing 1972 to 2014 is an exercise in futility.

Then I started thinking about all the tools I've bought over the past 8 years. Hmm, come to think of it a wedding dress is pretty cheap.

Then, I traveled to Carmel Valley for a breather after all the tension of wedding preparations. This was much nicer, until I lost my prescription glasses. Now, I've been blind since I was 15 with hyperopia . . . you know the ailment you typically get when you are past 40? Yeah, farsightedness.

My son wanted to show me something funny on YouTube, but I couldn't see the darn screen. He, being the fixer, had the solution: a rectangular magnifying glass (probably 1.5x power) that had a handle by which I could hold it.

Determined to participate in the fun, he played the video and I looked like a really, really old lady with the magnifier about 2 inches from the screen. He said, "Mom you look ridiculous."

He was right, so the next day I drove over to Carmel, then on to Monterey to

find someone who sold the Dr. Dean Edell's cheater glasses . . . the ones that cost \$3.99 for five hundred pair.

Unsure of whether I would need 2.5x 2.75x or 3.25, I decided to buy one of each for all occasions. The bill was \$84!! I was in too much shock to just walk back to the aisle and put two of them back.

By this point, I figure \$1,000 for wedding dress (min.), \$5,000 for all the trips back and forth before the blissful day, new prescription for glasses, \$600, flowers \$5,000, dress for me \$29.00, reception \$5,000, then another \$10,000 for caterers and I-don't-even-have-a-clue . . . but I'm sure to lose another set of glasses on top of everything.

Lessons I learned: 1) go to Woodcraft, it's cheaper. 2) Give my daughter \$10K to elope then come back and have a reception without flowers. 3) Take cheap glasses on vacation.

The vacation was perfectly topped when a dear friend from around Lubbock came down to Driftwood. We trekked over to Woodcraft and looked at router tables. Then we went out to the shop to teach her how to turn a finial. Ahhh, life does have its rewards.

Keep on turnin',
Hilda

Woodcraft is moving!

If you have enjoyed visiting Woodcraft in Austin, located at 8904 Research Blvd., you might want to know that they are moving a little down the road. For those of you who live in north Austin, this is good. For those of us in South Austin, we'll need to travel a bit farther down the road.

Their new site will be located at I35 and Braker. They plan to move next Spring or late this Winter! Of course you can always order online at woodcraft.com

Volunteer Instructors

SOUTH

Stacey Hager 512.282.1036
basics, spindles, sharpening, hollow vessels

Johnny Tolly 512.858.4471
basics, open segmented

Jimmy Tolly 512.894.0686
basics, platters

Craig Timmerman 512.288.3598
basics, square turning, hollow vessels

Charlie Kay c kayda@gmail.com
boxes & bottle stoppers
512.636.3492

H. O. Evans 512.282.2830
segmented turnings

Hilda Carpenter 512-395-7782
Airbrushing, tool handles, bowls,
Drozda finials, sea urchin ornaments,
bottlestoppers

Jack Besperka 512.261.4682
decoration & finishing

NORTH

Jim Spano 512.835.5023
novelty items, tops, shop gadgets

Len Brissette 512.258.4004
bowls, platters, sharpening

ROUND ROCK/ GEORGETOWN

Ed Roberts 512.255.3294
basics platters

Drew Shelton 512-863-4651

LOCKHART/SAN MARCOS

David Dick 512.357.6517
basics, spindles, architectural

Business Meeting

Jay Littlefiled substituted for Pat Little and opened the meeting by welcoming visitors: Dale Thompson, Dave Guillet (new member), and Park Smith (CEO of AYW).

Jay presented the slate of upcoming board officers and members. We will be voting for this slate in November. One quite concerning issue is we do not have a Program Chair for 2015. This is a critical position since this person determines who will present to the club each month. They are also responsible for locating the feature turner for 2016 class for our members. If you have ever wanted to contribute your talents to the club, this is a perfect opportunity to make a really big difference.

The prospective officers and members are:

President: Jay Littlefield*
President-elect: Steve Green
Program Chair: OPEN!!
Secretary/Newsletter Editor: Hilda Carpenter
Treasurer: Ed Roberts
Membership: Blair Feller
Webmaster: Vaden Mohrmann
A/V Coordinator: Greg Vest
First Saturday: Len Brissette
Librarian: Suzi Parker

*The only position that is “closed” for member nomination is President. This position is automatically filled by the President-elect from the previous year.

All other positions are open for nominations from the membership at the time of voting in November.

Jay then introduced Park Smith, CEO of American Youth Work. Park gave a speech that highlighted all the work that the kids of AYW contribute. The AYW funding is different and they have a dropout recovery program and the new model will include concentration on academics in addition to service and job training.

Keeping Austin Turning Since 1988

Park called for us to feel free to volunteer for tutoring, help fixing the building, writing, and fix broken tools.

Tom Choate announced that H.O. Evans was recognized for his recent award for Excellence at the Segmented Turning Symposium. Len Brissette covered the Instant gallery. Jay then turned the meeting over to Charlie Kay for the demonstration. After the demonstration we had a “guess” the turner on first turnings, then the bring back raffle.

59 members were present

Members In the News

November 9th, both Steven Green and Jimmy Tolly participated at the Art Show, Wesley Gallery in Dripping Springs.

December during the Armadillo Festival in Austin, Craig Timmerman will be offering his wares for all the Christmas shoppers.

Craig also demonstrated for the Eau Claire, Wisconsin chapter for their October meeting. We are really proud of our professional, Craig! He’s getting to be known at a National level!

If you are participating in an art show, or demonstrating please let the editor know so she can include your events in the Newsletter.

Upcoming Demo's & Classes

November: Tips & Tricks

December: Christmas Party

Jimmy Clews will be the 2015 professional demonstrator—more information to come.

January: Len Brissette

Photos

Photographs for this month's **Chip Pile** were provided by Charlie Kay. If you have digital photos that you would like to have considered for use in the newsletter. Send them to the Editor at hildac@mac.com.

HO HO HO!
Get started on your
turning for sharing
at the Xmas Party!
December 13th!

October Gallery

Thanks to all the following contributions to the gallery:

Jim Spano: Hackberry/Padauk off center bowl; Mesquite off center weed pot; Red bud off center weed pot

Mack Peterson: Birch, maple, walnut domino vase; Aspen, birch open segmented vase

Dwight Schaeper: Walnut goblet

Jim Philpott: Bradford pear salad bowl

Johnny Tolly: Arkansas oak popcorn bowl

Jim Brinkman: Pecan Goblet; Box Elder bowl

Herb Ingram: Black cherry burl bowl

Blair Feller: Bradford pear ?

Cortland Hunt: Purpleheart seam ripper; Cocobola seam ripper; Padauk and Olive laying tool

CTWA Thanks the following contributors to AYW Auction:

Jack Besperka

Joe Kirk

Drew Shelton

Johnny Tolly

Johnnie Perales

Bob Hreror

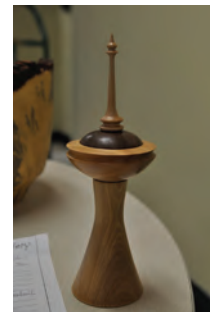
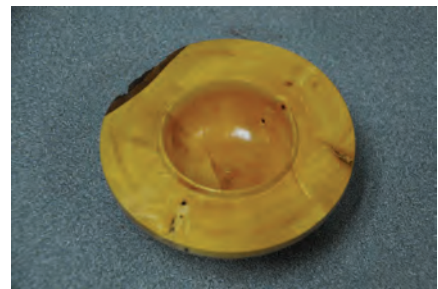
Len Brissette

Stephen VanGee

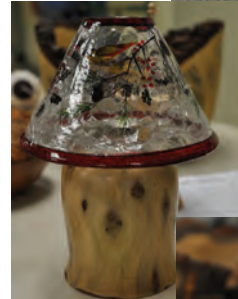
Dwight Schaeper

Steven Green

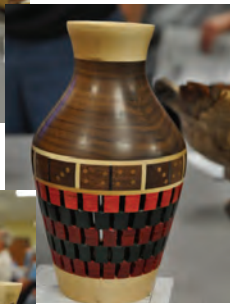
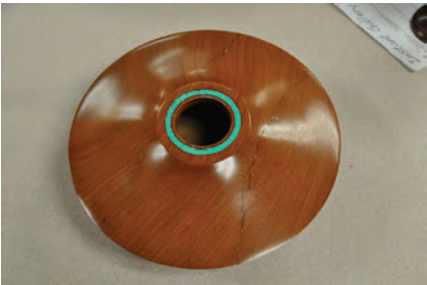
Hilda Carpenter



October Gallery



October Gallery



Bring Back Raffle

Turner: Winner

- Jim Spano: Jim Howe
- Peter Hawkins: Dwight Schaeper
- Hilda Carpenter: Jim Spano
- Greg Vest: Charlie Kay
- Johnny Tolly: Jim McKinney
- Peter Hawkins: Suzi Parker
- Charlie Kay: Vaden Morhmann
- Greg Vest: Marcia Tolly
- Dave Wolter: Jim Howe
- Greg Vest: Suzi Parker

REMEMBER TO RETURN THE FAVOR, if you won—bring back your turning for next month!!

November 1st Sat
Bob Duncan's



Membership in CTWA

We welcome NEW MEMBERS to join our band of merry turners any-time. An interest in woodturning is the only requirement. Dues are \$35.00 per year, prorated to \$3.00/month for new members.

With our membership, whether you are experienced or a novice, we will teach you, or learn from you, and build long-lasting friendships based on a common kinship of matching wood, metal, machine and man, or woman as the case may be.

CTWA members are also encouraged to join the American Association of Woodturners, AAW. AAW dues are:

General (\$55); **Family** (\$60) includes up to three family members living in same household on the membership card.
Youth, under 19 years of age (\$24)
Online (\$45 per year)
Online members do not receive printed versions of the American Woodturner journal and the "Resource Directory," available through online access.
Artist (\$81) business insurance.

For full details and membership form visit the AAW site at woodturner.org.

Classified Ads

Peter Hawkins has quite a bit of equipment for sale. See the club email for the list.

2014 Officers

President

Pat Little
Patlittle46@yahoo.com
512-423-0508

President Elect

Jay Littlefield
jay.littlefield@advantest.com
512-917-7316

Program Chairman

Drew Shelton
dcshelton@gmail.com
512-863-4651

Secretary/Newsletter Editor

Hilda Carpenter
512.395-7782
hildac@mac.com

Treasurer

Ed Roberts
512.255.3294
eroberts6@juno.com

Membership Chairman

Blair Feller
blair.feller@gmail.com
830-385-2782

Webmaster

Aleta Wallace
aleta.wallace@gmail.com
512-589-8949

Audio/Visual Coordinator

Greg Vest
512-736-2715
sounddudeaustin@gmail.com

First Saturday Coordinator

Len Brissette
512-423-3625
mesquite@austin.rr.com

Librarian

Stephen Van Gee
svangee@austin.rr.com

CTWA Web Site
www.ctwa.org

Editorial Information

This newsletter is by and for members. The Editor welcomes any written materials and will provide assistance with getting your information into publishable form if you want. **DEADLINE IS THE FIRST MONDAY OF THE MONTH.** Contact me with your ideas and drafts by phone at 512.395-7782, by E-mail at hildac@mac.com or mail them to:

The Chip Pile
c/o Hilda Carpenter
560 Moss Rose Lane
Driftwood, TX 78619

Calendar

The calendar listings are an attempt to keep you up to date on upcoming CTWA events, as well as other events of particular interest to woodturners. All regular 3rd Tuesday CTWA Meetings are at American Youthworks. Check Website for latest information.

All 1st Saturdays are from 9 am-noon. All meetings are 7 PM to 9 PM

Events & Dates subject to change, watch for emails or website notifications

November 18 CTWA Meeting
Presenter: Tips & Tricks
Vote on Officers

December 13th Christmas Party & 1st Saturday combined at Pat and Clyde Little's house

January 3rd First Saturday
Place: TBA

January 20 CTWA Meeting
Presenter: Len Brissette

Let Jay Littlefield know if you would like to present to the club in 2015 or you know someone who would be a great demonstrator for our club. We need presenters.

The Chip Pile

Central Texas Woodturners Association
A chapter of the American Association of Woodturners

Hilda V. Carpenter
560 Moss Rose Lane
Driftwood, TX 78619

To:

Meeting Location

The CTWA meets at American YouthWorks, 1901 East Ben White Boulevard (Texas 71) in south Austin. The building is on the south side of Ben White, just east of Interstate 35. The best entry is off Woodward Street, just south of a little strip center. You enter an alleyway into a lighted parking lot. We will enter through the back door. As you drive in, you will see a truck dock in the back of the building with a big roll-up white door. The entryway is just to the right of the truck dock. Folks coming from the north may want to exit I-35 at Woodward and proceed south on Woodward across Ben White.

