



The Chip Pile



The Newsletter of the Central Texas Woodturners Association

Austin, Texas

A Chapter of the American Association of Woodturners

July 15, 2014 Meeting

Jack Besperka

Surface Embellishments

7:00 - 9:00 PM

American YouthWorks - Austin, Texas

1901 East SH 71

(about 1/4 mile east of I-35 on south side of SH 71)

August 2nd First Saturday

9 am - 12 pm

Location: TBA

Watch for the Email

If you need help sharpening tools,
bring them!

CTWA is the sponsor for the Brazos North room at SWAT. We will need volunteers for each rotation of demonstrators (**Rudolph Lopez, Alan Carter, Jim Jones, Michael Reggio**) in this room.

Volunteers will be needed to operate the video camera, introduce the demonstrator and run any errands that might be needed by the demonstrator. I will have a sign-up sheet at the July meeting. We also need volunteers to sell raffle tickets.

If you have not signed up to attend SWAT, you will need to before the end of the month. On-site registration will be available at the opening of SWAT.

Beads of Courage Boxes - If you haven't completed your box, please complete and bring them to the meeting so we can take them to SWAT to display. After displaying them, they will be distributed to the children at Dell Children's hospital, who receive cancer or blood disorder treatments. They receive one bead for every treatment, and the number of beads a child gets can number into the thousands. I know our Beads of Courage boxes will put a smile on each recipient.

The AAW symposium was a success. Next year it will be in Pittsburgh, June 9 - 12, 2015, so start making plans to attend. As of December 31, 2013 AAW membership was down to 15,381. There are lots of benefits to AAW membership, so go to the web site and join. The demo rooms were very handy; however the vendors were quite a walk away from the demo rooms. The food was located nearby;

however not as handy as SWAT's facilities. Our symposium is the largest next to AAW. I would recommend everyone to attend. Waco is within driving distance, so plan to attend August 22-24. There will be a spaghetti dinner Friday night and dinner tickets must be purchased by noon Friday. The banquet dinner will be Saturday night with cash bar and 2 for 1 raffle.

After returning from the AAW symposium and the Women's National Bowling Tournament in Reno, I came home and bowled in the city tournament and was awarded the Womens City Championship. Thanks to everyone who cheered me on to victory.

Stay cool while turning your next project.

Pat Little
President CTWA

Monthly Features

- Bring Back Raffle, p. 7
- Business Meeting, p. 4
- Calendar, p. 10
- Classified Ads, p. 8
- Editor's "turn", p. 3
- Feature Presenter, p. 2
- First Saturday, p. 9
- Instant Gallery, p. 5-7
- Map, p. 12
- Membership Information, p. 8
- Member's in the News, p. 4
- Officers, p. 10
- Photo Credits, p.
- President's Shop, p. 1
- Upcoming Demo's./Classes p. 4
- Volunteer your Shop, p. 3
- Volunteer Instructors, p. 10
- EXTRA:
- SWAT Register now! p. 4
- Eli Avisera class, p. 8
- AYW Sr Pen Turning, p. 7

SHARING

I hope everyone enjoyed our Nation's Birthday, July 4th.

SWAT is our club's largest sharing event, time, effort, ideas and demonstrators. One that I will be interested in will be **James Duxbury's** demo on making a kaleidoscope. Other demonstrators to name a few

will be **Jim Creel, Mark Gardner, Avelino Samuel** and our ex SWAT President, **Janice Levi** and many more.

Don Ward will be demonstrating pen turning as usual. He is great and if you haven't made a pen before, I encourage you to get Don to help you make one for yourself or one as a gift for a friend.

The American Association of Woodturners is "Dedicated to Providing Education, Information and Organization to Those Interested in Woodturning." In keeping with the standards of our National Organization, the Central Texas Woodturners Association hereby gives permission for all other woodturning chapters, organizations, magazines and newspapers to use any materials contained herein for the benefit of all woodturners everywhere. We ask that credit be given for the source of the material.

President's Shop

June Demonstration
Off Center Bowl Turning
Jim Spano



Jim Spano is an inventive woodturner and always a fun demonstrator. This month he delighted us with a demon-



stration of Off Center Bowl Turning. The tools Jim used for the demonstration included a hot-glue gun and a microwave oven.



Jim started off the demonstration by talking about all the ways to finish the bottom of a bowl. These included: friction drive, jam chuck, cole jaws, longworth, donut chuck, vacuum chuck, homemade jaws, masking tape on a flat drive center, the David Ellsworth method (turning the bottom to a tiny nub then using a carving spoon to cut off the nub as it is spinning down),

Keeping Austin Turning Since 1988

or sanding off the nub), and shrink



wrap, to name a few. In the case of off center turning, these methods don't work because there are two chucking



points. What Jim does is use a waste-block with two tenons, one offset 10 mm from the other. He uses his small



chuck for the smaller tenon. Then Jim uses a hot-melt glue gun on the finished bottom (he has not cut the offset inside of the bowl at this point). The



wood-to-wood connection with the hot glue creates a stable hold for both the offset center and the center of the bowl. While he applies the hot glue, he slowly has the chuck turning to ensure an even dry on the glue. At this point, he's ready to mount the waste block bottom of the bowl onto the chuck to

turn the centers (offset and any distinguishing curves, as shown in the picture). While turning, Jim uses simple, not aggressive cuts to hollow out the form. Since the tenon is braced by glue, it has some flex. You can use a negative rake or round scraper to finish the bowl. To make the feature rings, he tilts the tenon in the chuck and cuts



with a skew.

When he completes the turning and finishing, he puts the bowl into the microwave (each microwave is different, so he couldn't make a recommendation on what another microwave's settings might be). He removes the bowl from the microwave and pulls the



bowl away from the waste block. CTWA appreciates Jim for an informative demo.

Editor's "Turn"

This month has been a busy month for Steven and me. My Navy son came through and visited with us for a few days on his way to the Monterey Naval Post Graduate school. Then Steve's son and daughter-in-law and our two granddaughters visited over the week of the 4th. We typically don't get a lot of company, so it was terrific fun!

I did get some turning done, more ornaments and I came up with, what I think, is a clever design on a bottle stopper. As most of you know, who turn bottle stoppers, it's a little difficult to come up with unusual shapes. So I had some fun with it. After a while, coves and beads get a little tiresome, so I concocted a (what I'll call) zen bottle stopper. It all went pretty well, until I cut off the head of one of the zen guys. Ooops!

I'm really getting excited about attending the Southwest Association of Woodturners (SWAT) symposium. Each of these symposia that I attend really recharges me with new ideas. I get to catch up with turners I have met from the four-state area. One year I met a delightful couple from Missouri, who came to SWAT.

I think one of the most fun things to do is to sit down with complete strangers and strike up a conversation about their interests.

Of course, several members of our club will tell you that I get a BIG kick out of the auction. I always buy tickets and always hope I'll win the lathe, or one of the professional's turnings. Ok, I'll admit, I get pretty obnoxious when no one else gets excited, and the cheerleader in me comes out—much to the embarrassment of my table mates.

I really hope you will consider attending SWAT. It's inexpensive and so educational.

Keep turning it on,
Hilda

Volunteer Your Shop for First Saturday!

1. It doesn't need to be fancy, or big.
2. We'll bring the lathes.
3. You make the coffee.
4. We'll bring the donuts.
5. Have enough room for at least 1-2 turners (easy in the summer).
6. Let Len Brissette lbrissette@austin.rr.com know! Or email the editor.

Business Meeting

Jay Littlefield opened the meeting by welcoming all who attended. For the first time since I can remember, we had no visitors.

Drew Shelton, CTWA's program manager, announced that the feature turner in 2015 will be **Jimmy Clews**. The target date is still being set, but it most likely will be during August before SWAT 2015.

Marcia Tolly announced that the Clarion Hotel will not be available at SWAT due to demolition. Marcia said that **Wayne Furr** is working with other hotels to get the same price that the Clarion was promising. Marcia encouraged everyone to get their hotel reservations asap, evidently SWAT is working with other hotels to secure lower fares for SWAT attendees. Be sure to ask for this when you make your reservation and check the SWAT website for updates.

Shawn Graham announced that his business will be moving from San Marcos to Austin. His organization provides classes to local after-school students in woodturning. He is arranging classes there with some top woodturners, such as **Jimmy Clews, Ashley Harwood, Richard Raffan**.

Len Brissette has arranged for the July first Saturday to be on July 12th, a delay due to the July 4th holiday.

Jay reminded everyone to get their Beads of Courage boxes in by the August CTWA meeting. SWAT is August 22-24 and all the Beads of Courage boxes will be placed in the gallery.

Jay also reported on the Eli Evisera

Keeping Austin Turning Since 1988 classes. Those who attended found Eli to be quite engaging and informational.

Johnny Tolly announced that the Senior Pen turning occurred on the same day as one of Eli's classes. Evidently 64 pens were turned for the graduates and staff. The kids smiles made it all worthwhile. Johnny deemed the day a success.

Blair Feller announced that if you are not getting the CTWA group emails to send a note to Aleta to ensure your name is on the list. If you have not paid your dues, you are not on the membership group mail. Remember, often times there are announcements via that mechanism regarding club activities.

Members In the News

Pat and Clyde Little attended the American Association of Woodturners symposium, then had a lot of fun at the Bowling Tournament

Upcoming Demo's & Classes

July: Jack Besperka, Surface embellishments

August: TBD

Photos

Photographs for this month's **Chip Pile** were provided by **Drew Shelton**. If you have digital photos that you would like to have considered for use in the newsletter. Send them to the Editor at hildac@mac.com.

ALERT!!!!
Time to Sign up for SWAT!!
Beads of Courage Boxes due by Aug.

Drew Sheldon has taken on the task of cutting the Beads of Courage beads in half should anyone need a few. These beads are smaller than the ones in the past. They are 3/4" across and both Drew and **Johnny Tolly** have trimmed them to fit into a 3/4" hole. Please see Drew and or Johnny at the July meeting if you need a bead or two to finish up your Beads of Courage boxes.

Your **Beads of Courage** boxes need to be completed by the August meeting. Members can bring them to the August meeting and if they wish can even take them up to SWAT. If they cannot attend SWAT, (everyone should be going to SWAT though), the Tolly's will transport the boxes up to Waco.

June Gallery

Thanks to all the following contributions to the gallery:

Craig Timmerman, 2 items: “Diamond in the Rough” cedar elm burl, walnut/maple veneer, walnut; “Crescent Moon” cedar elm burl, valnut/maple veneer, walnut
Mack Peterson 3+ items: Zebra wood bowl with plastic and maple; Segmented vase, plywood and maple; Balls

Jack Graham: turning from Eli’s class

Dwight Schaeper: Beads of Courage box, poplar and maple and dye

Jay Littlefield: Bowl, honduran wood

Joe Kirk: Beads of Courage box, lemon wood and cherry.

H.O. Evans: Maple sculpture 214 pieces with 38” of steel and 1/8” rod.

Charlie Kay: 3 bottle stoppers—2 spalted pecan 1 TX persimmon

Jimmy Tolly: Wood boswellia gum dyed

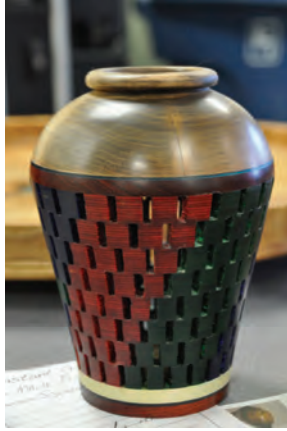
Steven Green: “Zen Tree of Life” Crystal inlay maple

John Lovelady 2 items: lidded box, brazilian pepper tree; “Bowl on a Bridge” wood unknown

Randy Brewer 3 items: Hollow form, madrone; Vase, madrone; “Awesome bowl” salted ambrosia maple

Jack Graham 2 items: Pecan tree; Sycamore tree

Johnny Tolly 3 items: Maple platter; 2 pens; Beads of Courage (collaboration with **Marcia Tolly**)



June Gallery



June Gallery



Bring Back Raffle

Jack Graham: Randy Brewer



Jim Spano: Jimmy Tolly



Drew Shelton: David Dick



Pat Jenkins: Jimmy Tolly



REMEMBER TO RETURN THE FAVOR, if you won—bring back your turning for next month!!

AYW Senior Pen Turning

CTWA thanks the following people that gave of their time freely for the Senior Pen Turning day on June 9th. **Jim Spano, John Parker, Dwight Schaeper, Ed Roberts and his grandson Ronald Bennett, Drew Sheldon, Charles Kay, Al Gaskell, Richard Greenfield, Johnnie Perales, Marcia Tolly and Johnny Tolly.** Without these peoples' help, the event would not have gone as smoothly as it did. There were 64 people that turned a pen and the smiles on the faces when each pen was completed is priceless. This is one of the main events that CTWA does for the American Youth Works and it was a great success. Again, thanks to those CTWA members that made it happen. We also thank **Vince Welch** for providing the sanding supplies for six stations during the pen turning. <http://vinceswoodnwonders.com/>

Membership in CTWA

We welcome NEW MEMBERS to join our band of merry turners any-time. An interest in woodturning is the only requirement. Dues are \$35.00 per year, prorated to \$3.00/month for new members.

With our membership, whether you are experienced or a novice, we will teach you, or learn from you, and build long-lasting friendships based on a common kinship of matching wood, metal, machine and man, or woman as the case may be.

CTWA members are also encouraged to join the American Association of Woodturners, AAW. AAW dues are:

General (\$55); **Family** (\$60) includes up to three family members living in same household on the membership card.

Youth, under 19 years of age (\$24)

Online (\$45 per year)

Online members do not receive printed versions of the American Woodturner journal and the "Resource Directory," available through online access.

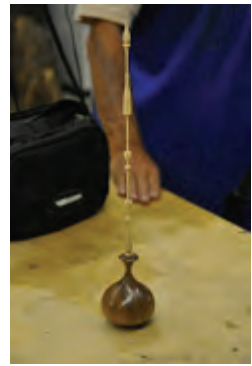
Artist (\$81) business insurance.

For full details and membership form visit: <http://www.woodturner.org/?page=MemberBenefits>

Classified Ads

Keeping Austin Turning Since 1988

Eli Avisera Classes

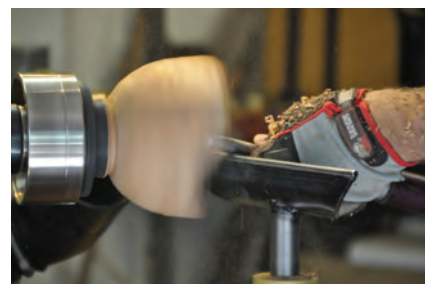
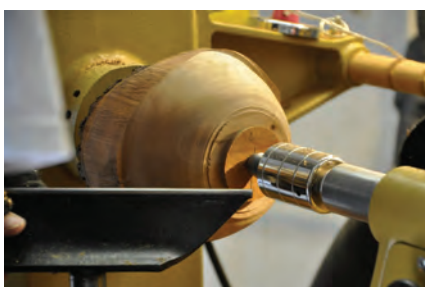


CTWA thanks **Pat and Clyde Little** for the use of their shop for these classes. A special thanks goes to **Pat Little** for substituting for **Drew Shelton** in arranging Eli to be in Austin.

A total of 15 people attended the workshop across the 2 days.

First Saturday

Here are the pictures from June's first Saturday held at **Jim Brinkman's** shop. July's first Saturday will be in next month's Chip Pile.



Volunteer Instructors

SOUTH

- Stacey Hager** 512.282.1036
basics, spindles, sharpening, hollow vessels
- Johnny Tolly** 512.858.4471
basics, open segmented
- Jimmy Tolly** 512.894.0686
basics, platters
- Craig Timmerman** 512.288.3598
basics, square turning, hollow vessels
- Charlie Kay** ckayda@gmail.com
boxes & bottle stoppers
512.636.3492
- H. O. Evans** 512.282.2830
segmented turnings
- Hilda Carpenter** 512-395-7782
Airbrushing, tool handles, bowls,
Drozda finials, bottlestoppers
- Jack Besperka** 512.261.4682
decoration & finishing

NORTH

- Jim Spano** 512.835.5023
novelty items, tops, shop gadgets
- Len Brissette** 512.258.4004
bowls, platters, sharpening

ROUND ROCK/ GEORGETOWN

- Ed Roberts** 512.255.3294
basics platters

Drew Shelton 512-863-4651

LOCKHART/SAN MARCOS

- David Dick** 512.357.6517
basics, spindles, architectural

2014 Officers

President

Pat Little
Patlittle46@yahoo.com
512-423-0508

President Elect

Jay Littlefield
jay.littlefield@advantest.com
512-917-7316

Program Chairman

Drew Shelton
dcshelton@gmail.com
512-863-4651

Secretary/Newsletter Editor

Hilda Carpenter
512.395-7782
hildac@mac.com

Treasurer

Ed Roberts
512.255.3294
eroberts6@juno.com

Membership Chairman

Blair Feller
blair.feller@gmail.com
830-385-2782

Webmaster

Aleta Wallace
aleta.wallace@gmail.com
512-589-8949

Audio/Visual Coordinator

Greg Vest
512-736-2715
sounddudeaustin@gmail.com

First Saturday Coordinator

Len Brissette
512-423-3625
mesquite@austin.rr.com

Librarian

Stephen Van Gee
svangee@austin.rr.com

CTWA Web Site
www.ctwa.org

Editorial Information

This newsletter is by and for members. The Editor welcomes any written materials and will provide assistance with getting your information into publishable form if you want. **DEADLINE IS THE FIRST MONDAY OF THE MONTH.** Contact me with your ideas and drafts by phone at 512.395-7782, by E-mail at hildac@mac.com or mail them to:

The Chip Pile
c/o Hilda Carpenter
560 Moss Rose Lane
Driftwood, TX 78619

Calendar

The calendar listings are an attempt to keep you up to date on upcoming CTWA events, as well as other events of particular interest to woodturners. All regular 3rd Tuesday CTWA Meetings are at American Youthworks. Check Website for latest information.

All 1st Saturdays are from 9 am-noon. All meetings are 7 PM to 9 PM

Events & Dates subject to change, watch for emails or website notifications

July 12 1st Saturday
Place TBA

July 15 CTWA Meeting
Presenter
Jack Besperka, Surface Treatments

August 2 1st Saturday
Place TBA

August 19 CTWA Meeting
Presenter TBA

August 22-24 SWAT, Waco, TX

September 6 1st Sat
Place TBA

September 16 CTWA Meeting
Presenter TBA

October 4 1st Saturday
Place: Drew Shelton

October 21 CTWA Meeting
Presenter TBA

November 1st Saturday
Place: TBD

November 18 CTWA Meeting
Presenter: TBA

December Christmas Party & 1st Saturday combined

The Chip Pile

Central Texas Woodturners Association
A chapter of the American Association of Woodturners

Hilda V. Carpenter
560 Moss Rose Lane
Driftwood, TX 78619

To:

Meeting Location

The CTWA meets at American YouthWorks, 1901 East Ben White Boulevard (Texas 71) in south Austin. The building is on the south side of Ben White, just east of Interstate 35. The best entry is off Woodward Street, just south of a little strip center. You enter an alleyway into a lighted parking lot. We will enter through the back door. As you drive in, you will see a truck dock in the back of the building with a big roll-up white door. The entryway is just to the right of the truck dock. Folks coming from the north may want to exit I-35 at Woodward and proceed south on Woodward across Ben White.

