



The Chip Pile



The Newsletter of the Central Texas Woodturners Association

Austin, Texas

A Chapter of the American Association of Woodturners

January 21, 2013 Meeting

Twist Boxes

Drew Shelton

7:00 - 9:00 PM

American YouthWorks - Austin, Texas

1901 East SH 71

(about 1/4 mile east of I-35 on south side of SH 71)

I am sure everyone is concerned for the school, the kids and the long-term question of how it will affect our club meetings. However, CTWA has had to move our meeting place in the years gone by and we can move to a new meeting place. We will hope that does not happen.

Feb 1st Saturday

Feb. 1, 2014 9 am - 12 pm

Randy & Dolly Brewer's

719 Cougar Drive, Canyon

Lake, TX 78133,

830-935-4034

If you need help sharpening tools, bring them!

I want to extend a very warm thank you to **Charles Kay** for his leadership this past year in the club and at SWAT. There were many behind-the-scenes efforts that Charlie spearheaded to help the club in all aspects. I hope you will join me in thanking him for his service to the club and beyond.

Our Christmas party was a great success, and I'd like to thank each member who joined, especially those new to the club and party. I especially would like to thank **Marcia Tolly** for her pyrography demo/training. I understand the participants had a good time.

We will have President's challenges this year, details to follow in the next few months. I also am working with Drew Shelton to bring another world-class turner to come to Austin for classes.

I will do my best to help move this club forward in the upcoming year and keep the club vital and fun.

Your president,

Pat Little

Monthly Features

- Bring Back Raffle, p. 9
- Business Meeting, p. 4
- Calendar, p. 10
- Classified Ads, p. 11
- Editor's "Turn", p. 4
- Feature Presenter, p. 2-3
- First Saturday, p. 11
- Instant Gallery, p. 7-8
- Map, p. 12
- Membership Information, p. 9
- Member's in the News, p. 3
- Officers, p. 10
- Photo Credits, p. 3
- President's Shop, p. 1
- Random Ruminations, p. 6
- Upcoming Demo's,/Classes p. 3
- Volunteer your Shop, p. 9
- Volunteer Instructors, p. 9
- Extra: Christmas Party, p. 5

President's Shop

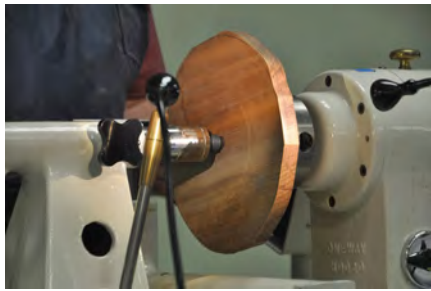
Happy New year! I would like to thank the club for the opportunity to serve as your President. For you that may not know, Texas Senate Bill 2 could force some open-enrollment charter schools to close. This potentially includes American Youthworks (AYW) along with five other schools effective June 30, 2014. AYW receives approximately \$1M annually from Texas Education Agency (TEA). **Parc Smith**, CEO of AYW, plans to appeal the TEA's decision.

In the interim, we will continue to meet at AYW and hopefully they will be able to maintain their status. The school's loss of charter would be very sad for the Austin community. It has been in existence for 30 years and helps close to 400 at-risk youth get their G.E.D. and job and technical training.

The American Association of Woodturners is "Dedicated to Providing Education, Information and Organization to Those Interested in Woodturning." In keeping with the standards of our National Organization, the Central Texas Woodturners Association hereby gives permission for all other woodturning chapters, organizations, magazines and newspapers to use any materials contained herein for the benefit of all woodturners everywhere. We ask that credit be given for the source of the material.

November Demonstration
Quick Christmas Gifts

Len Brissette led the demonstration by turning a plate. He noted that many people really like getting a plate that can function to serve food during the Christmas Season. Len also

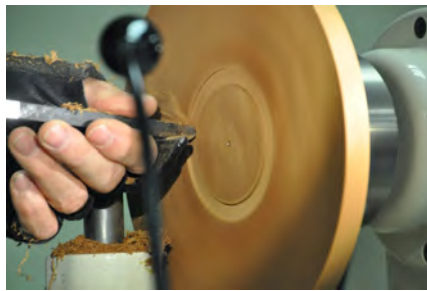


demonstrated tremendous patience as hecklers from the crowd couldn't help themselves from offering their opinion.



He good-naturedly took the ribbing and managed to show us (despite the hecklers) how he turns his platters. He begins the curve of the inside of the plate and checks to insure that it has concave curve from the edges.

Keeping Austin Turning Since 1988



Jimmy Tolly followed Len to demonstrate turning a candlestick from, what he termed, "S#%Y wood. Jimmy



received a commission to turn several candlesticks of varying shapes for a woman who would later decorate them. Thus, the wood didn't need to be high quality. A bargain for the woman,



as she was unable to get raw-wood candlesticks that were as pretty or cost-

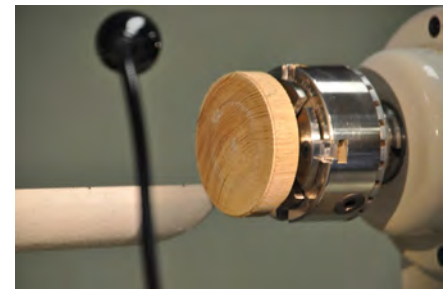
effective as what Jimmy could make her.



Rounding out the threesome, **Charles Kay** demonstrated making a wooden jar top. Charlie said that he would dec-



orate them, then fill the jars with goodies for his granddaughter's Christmas gift. After using double-sided tape to secure the jar-top wood onto a waste block, he hollows out the inside that will cover the jar's original lid. Using calipers, he measures the outside dimension of the original lid. While hollowing, Charlie points out that it is important to keep the inside flat, in order to have a good surface to glue the original lid to the wooden lid you are making.



November Demonstration
Quick Christmas Gifts



After finishing the inside of the lid, he reverses the block of wood and secures it again with double-sided tape. He turns the wood to a slight curve and softens the edge. Finally, he sands and finishes the top of the lid.



Charlie then glues the lid to the original lid, voila it's finished!

CTWA would like to thank Len, Jimmy and Charlie for their demonstrations. They were informative and helpful to those who might need last-minute gifts.

Photos

Photographs for this month's **Chip Pile** were provided by **Drew Shelton, Charlie Kay and Hilda Carpenter** If you have digital photos that you would like to have considered for use in the newsletter. Send them to the Editor at hildac@mac.com.

Upcoming Demo's & Classes

January Drew Shelton Twist Box

February TBD

March TBD

April TBD

May TBD

June TBD boxes

No special classes scheduled at this time

Note: February's 1st Saturday will be interesting since Randy will have a large piece of wood mounted on his large lathe for anyone who wants the experience of turning a large form.

Members In the News

Craig Timmerman spent a grueling and fun 2 weeks at the Armadillo Christmas Bazaar from Dec 17-24. Craig writes, "Had a woman buy a nice mesquite bowl tonight. She then asked me if I wanted to know why she bought it. Last year she and her mother were at the show and she really wanted a bowl. Her mother told her to pick one out and she would pay for it. She declined the offer as she knew her mother had already gotten her a present. Shortly after Christmas her mother passed away in an accident. So she wanted to buy a bowl like her mother would have bought her last year as a memory.

Never under estimate how your work touches the life of others."

Thanks Craig, for sharing that wonderful story.

On November 14th, **Johnny and Marcia Tolly** travelled to Kerrville to demonstrate for the Hill Country Turners. They also took Johnny's brother, **Jimmy Tolly**, along for a room assistant. There were over 50 people present for the dynamic duo demonstration. Johnny covered all

safety items, then he proceeded to explain how he turns thin Maple disks for Christmas Ornaments. Jimmy was kept quite busy handing out examples and picking up things for Johnny. Johnny then turned the demonstration over to Marcia and she demonstrated the basics of pyrography to embellish the Maple disks. It was also a wonderful surprise as our own CTWA members **Dolly and Randy Brewer** who came over to watch the demonstration. Johnny's good friend **Jerry Degroot** provided the Maple wood that Johnny prepared so each Hill Country Turner that wanted one, could take a couple of the Maple disk's home and make up some Christmas Ornaments. This was the sixth demonstration that the Tolly team did during the past year.

Business Meeting

Charlie Kay recognized our visitors, **Don Thompson and Mary Orsa**. He then called for volunteers who wished to be included for one of the officer positions. **Drew Shelton** volunteered to take **Stacey Hager's** place in this the program chair position. With no other volunteers than Drew, Charlie called for a motion to accept the presented slate, **Jimmy Tolly** moved, seconded by **Johnny Tolly** to accept the slate of volunteers. Charlie then called for a vote to install the 2014 officers as follows:

President: **Pat Little**

Past President: **Charles Kay**

President Elect: **Jay Littlefield**

Program Chair: **Drew Shelton***

Secretary/Newsletter: **Hilda Carpenter**

Treasurer: **Ed Roberts**

Librarian: **Stephen Van Gee**

Membership Chair: **Blair Feller**

A vote by unanimous acclamation to accept all officers passed.

Charlie recognized some key contributors to the club. **Jim Spano**, as the #1 primary assistant and back-up support to **Greg Vest**, A/V. Charlie indicated Jim would like for someone to take this role in the upcoming year. Please see **Jim, Greg Vest or Pat Little** if you are interested.

Membership dues are expected to be paid by the first of the year. **Blair Feller** will accept checks at the Christmas party. Otherwise, remember to bring them to the January meeting.

The Drozda classes went well and we had fewer than expected for her Saturday demonstration. Thanks to Pat & Clyde Little for hosting the classes, **Drew Shelton and Jim Spano** for cleanup, **Stacey Hager**

Keeping Austin Turning Since 1988

for arranging the class, **Johnnie Perales** for opening up AYW on Saturday, **Jim Spano and Len Brissette** for video support during the classes. Charlie recognized Craft Supplies for the gift certificates handed out during the year.

Charlie then recognized the following people for contributing to the AYW Fall Fundraiser:

Drew Shelton, Ed Roberts, Suzi Parker, John Parker, Randy Brewer, Jimmy Tolly, Marcia Tolly, Johnny Tolly, Jim Philpott, Rick Greenfield, Bob Duncan, Jim Spano, Jim Brinkman and Vaden Mohrmann. Charlie presented a Craft Supplies certificate to **Johnnie Perales** to thank him for including us in the Fundraiser. Johnnie then talked about the success the contributions made to the fundraiser.



After **Pat Little** reviewed the gallery, Charlie turned the meeting over to **Stacey Hager** and the three demonstrators, **Jimmy Tolly, Len Brissette and Charlie Kay**. 49 people attended the meeting.

Editor's "Turn"

2013 was a great year for CTWA. We increased our membership to over 120. Our meetings consistently had 45-60 people attending. The CTWA trainings included various classes for beginners and intermediates. We had 3 President's Challenges, a successful Christmas

party and 25th Year Celebration.

Stacey Hager was a large part of why the year was successful and we always had great attendance at our meetings. **Greg Vest** showed all the other clubs what "real" audio visual support looked like at SWAT.

Indeed **Charles Kay** proved to be a great President. It amazed me that he had never been tapped for this service before! But then again, Charlie gave so much service for over a decade getting the award-winning Chip Pile out to our members. As I reflected on what made Charlie such a great leader, several adjectives came to my mind: Courteous, Funny, Interesting, Challenging (I mean he challenged the club, not that he was challenging!), Prompt, Well-versed, Organized and Inspiring. I want to personally thank Charlie for the opportunity to work with him in his leadership role. I hope you can pass along your appreciation for a job well done!

I've been busy turning since I attended **Cindy Drozda's** class. I am amazed how much my skill increased beyond what I thought was possible. Now, don't get me wrong, I'm still very good at blowing things up, but I'm finding they happen less and less often. Yay!

Here's looking forward to a terrific year with **Pat Little** at the helm of our club. I have no doubt 2014 will be another great year for CTWA.

Keep turnin' it on!
Hilda Carpenter, Editor

Christmas Party 2013

Pat and Clyde Little hosted our club with a morning of turning, and an afternoon of great food and gifts. We were sorry Clyde missed it!

Charlie presented a recognition platter to Jim Spano in thanks for all his service to the club. Here are a few photos from the White Elephant gift exchange. At the end of the party we "auctioned" off four unfinished **Cindy Drozda** boxes to the lucky winners who paid \$25 for each item. These winners were: **Jay and Michelle Littlefield, John Parker and Dwight Schaeper**. Congratulations for winning and thanks for everyone who entered the drawing.



Random Ruminations:

"A Thank You"

BY

Charles Kay

Thanks to all of you in CTWA for giving me the privilege of serving as your President in 2013 and for your support and assistance in getting me through that assignment. Everything that happens in our organization is the result of many hands willingly committed to accomplishing the things that none of us could do alone. As with all that we undertake in life, a year ago we planned and dreamed about what we wanted to accomplish. We succeeded in many of those plans and fell short in a few, but I wanted to review, in no particular order, the successes I think we had as an organization. We'll leave the things that didn't get done for others to undertake.

Thanks to the perseverance of **Jim Spano and Clyde Little**, we successfully put on two sessions of weekend classes for new and intermediate turners, something I hope will turn into a tradition. Under the leadership of **Johnny and Marcia Tolly**, we pulled together a large collection of lidded bowls and presented them to the **Beads of Courage** program associated with **Dell Children's Hospital**. Thanks to the efforts of **Stacey Hager** in making all the arrangements and to Clyde and Pat for hosting, we had a very successful day of demonstrations and four days of classes with **Cindy Drozda**. In addition to these big events, we celebrated our 25th Anniversary as a club and as an AAW affiliate, thanks to Stacey's efforts to bring together a number of our original members to reminisce about the early days of the organization and to **Betty Hager** for arranging for the refreshments.

We also conducted a tool exchange at one of our First Saturday events, whereby long-time turners brought along gently used tools they no longer needed and sold them for low prices to newer turners. This got rid of some of the tool clutter in certain shops and allowed new turners to get better quality tools than they might otherwise have done for the same amount of money. I hope that this will be another event we will continue. Finally, we conducted the first annual audit of our financial accounting and arranged for appropriate liability insurance for our club, after the AAW was no longer able to provide that for us.

There are so many folks who helped and contributed to our successes in 2013 that it would be impossible to name all of them, but I will try to mention those that went above and beyond the call. Thanks, first, to those of you who served as officers for the year. Your service is appreciated. I do want to thank, in particular, three officers with specialized skills who serve tirelessly year after year: our treasurer **Ed Roberts**, our audio visual guru **Greg Vest**, and our newsletter editor **Hilda Carpenter**, and although he isn't an officer, our unofficial club photographer, **Drew Shelton**. People with those skills are hard to come by and we appreciate all that they do. Special thanks as well to **Stacey Hager** for pulling together our meeting programs for the year and to **Len Brissette** for arranging for First Saturdays. As always, special thanks to Pat and Clyde Little for hosting all our big events. That requires a lot of time and effort on their part. Finally, thanks to folks who are always available to step up and lend a hand, as a meeting demonstrator, class teacher, back-up videographer, or whatever else needs to be done - folks like **Drew Shelton, Len Brissette, Craig Timmerman**, and, always, **Jim Spano**, as well as others whom I have undoubtedly overlooked.

I expect to continue to take an active role in our club, but I do not plan to be involved in quite so many things as I have been in the past. I hope to continue, with Hilda's sufferance, to provide periodic pieces for The Chip Pile, but I don't plan to do so on a monthly basis. I am looking forward to our new year of activities and know that you will give **Pat Little** the same sort of active support that you gave me.

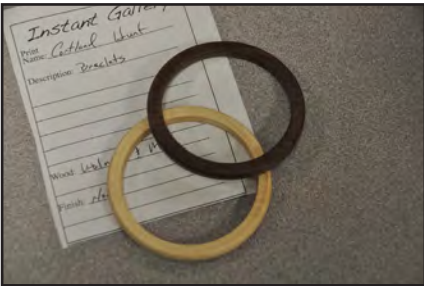
Thanks for a good year!

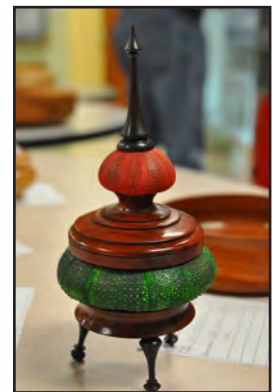
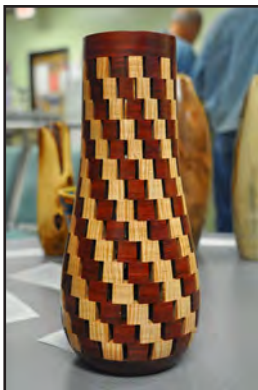
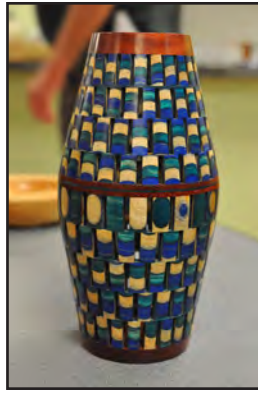
Charlie Kay

November Gallery

Thanks to all the following contributions to the gallery:

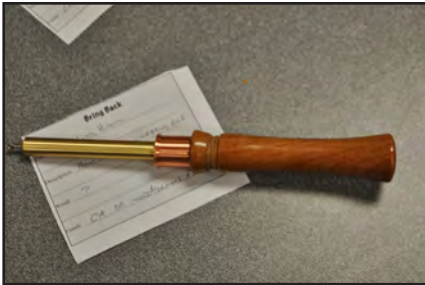
- Randy Brewer:** Hackberry Vase
- Randy Brewer:** Cedar Negative Space hollow form
- Randy Brewer:** Walnut Negative Space hollow form
- Randy Brewer:** Mesquite Negative Space hollow form
- Jim Spano:** Elm Off-center bowl
- Jim Spano:** Kentucky coffee bean Off-center bowl
- Cortland Hunt:** Sycamore bowl
- Cortland Hunt:** Walnut & Maple bracelets
- Jim Philpott:** Maple Christmas tree
- Cortland Hunt:** ?Ash bowl
- Mack Peterson:** Plywood/Padauk Open-segment vase
- Mack Peterson:** Plywood, mesquite, yellow heart segmented base
- Mack Peterson:** Mesquite vase
- Mack Peterson:** Fiddleback maple, bloodwood open segment vase
- Cortland Hunt:** Mesquite Lidded box
- Johnny Tolly:** Mesquite Popcorn bowls
- Joe Kirk:** Maple last-minute turnings
- John Parker:** Rough-turned spalted hackberry, hackberry, Mesquite
- Ed Roberts/Drew Shelton** collaboration: maple & rosewood Drozda box
- Gene Berry:** elm/chinaberry/firewood? bowl
- Jim Brinkman:** Persimmon Holey candlesticks
- Don Thompson:** Blackwood Jatoba sea uchin bowl





Bring Back Raffle

Jim Howe: Johnny Tolly



Jim Howe: Greg Vest



Charles Kay: Jim Howe



Johnny Tolly: Jimmy Tolly



Jim Spano: Don Thompson



Jim Spano: Jim Howe



Pat Little: Jim Howe (no picture)

REMEMBER TO RETURN THE FAVOR, if you won—bring back next month!!

Membership in CTWA

We welcome NEW MEMBERS to join our band of merry turners anytime. An interest in woodturning is the only requirement. Dues are \$35.00 per year, prorated to \$3.00/month for new members. CTWA members are also encouraged to join the American Association of Woodturners, AAW. Those dues are \$43 online membership only, \$53.00 for individuals and \$58 for families. Your membership includes the AAW magazine, American Woodturner, a first-class quarterly magazine full of woodturning articles, tips and ideas with color illustration of the world's master turners' techniques. With our membership, whether you are experienced or a novice, we will teach you, or learn from you, and build long-lasting friendships based on a common kinship of matching wood, metal, machine and man, or woman as the case may be.

Volunteer Instructors

SOUTH

Bill Hammack 512.282.0832
tops tiny turnings

Stacey Hager 512.282.1036
basics, spindles, sharpening, hollow vessels

Johnny Tolly 512.858.4471
basics, open segmented

Jimmy Tolly 512.894.0686
basics, platters

Craig Timmerman 512.288.3598
basics, square turning, hollow vessels

Charlie Kay ckayda@gmail.com
boxes & bottle stoppers
512.636.3492

H. O. Evans 512.282.2830
segmented turnings

Hilda Carpenter 512-395-7782
Airbrushing, tool handles, bowls, bottlestoppers

Jack Besperka 512.261.4682
decoration & finishing

NORTH

Rusty Myers 512.218.1606
basics, boxes, kitchenware

Judy Williams 512.293.7479
spindles

Jim Spano 512.835.5023
novelty items, tops, shop gadgets

Len Brissette 512.258.4004
bowls, platters, sharpening

ROUND ROCK

Larry Walrath 512.255.5379
big vessels, bowls, platters

Ed Roberts 512.255.3294
basics platters

LOCKHART/SAN MARCOS

David Dick 512.357.6517
basics, spindles, architectural

2014 Officers

President

Pat Little
Patlittle46@yahoo.com
512-423-0508

President Elect

Jay Littlefield
jaylittlefield@verig4.com
512-917-7316

Program Chairman

Drew Shelton
dcselton@gmail.com
512-863-4651

Secretary/Newsletter Editor

Hilda Carpenter
512.395-7782
hildac@mac.com

Treasurer

Ed Roberts
512.255.3294
eroberts6@juno.com

Membership Chairman

Blair Feller
blair.feller@gmail.com
830-385-2782

Webmaster

Aleta Wallace
aleta.wallace@gmail.com
512-589-8949

Audio/Visual Coordinator

Greg Vest
512-736-2715
sounddudeaustin@gmail.com

First Saturday Coordinator

Len Brissette
512-423-3625
mesquite@austin.rr.com

Librarian

Stephen Van Gee
svangee@austin.rr.com

CTWA Web Site

www.ctwa.org

Editorial Information

This newsletter is by and for members. The Editor welcomes any written materials and will provide assistance with getting your information into publishable form if you want. **DEADLINE IS THE FIRST MONDAY OF THE MONTH.** Contact me with your ideas and drafts by phone at 512.395-7782, by E-mail at hildac@mac.com or mail them to:

The Chip Pile
c/o Hilda Carpenter
560 Moss Rose Lane
Driftwood, TX 78619

Volunteer Your Shop for First Saturday!

1. It doesn't need to be fancy, or big.
2. We'll bring the lathes.
3. You make the coffee.
4. We'll bring the donuts.
5. Have enough room for at least 1-2 turners (easy in the summer).
6. Let Len Brissette lbrissette@austin.rr.com know! Or email the editor.

Calendar

The calendar listings are an attempt to keep you up to date on upcoming CTWA events, as well as other events of particular interest to woodturners. All regular 3rd Tuesday CTWA Meetings are at American Youthworks. Check Website for latest information.

All 1st Saturdays are from 9 am-noon. All meetings are 7 PM to 9 PM

Events & Dates subject to change, watch for emails or website notifications!

Jan 4 1st Sat
Place Len Brissette

Jan 21 CTWA Meeting
Presenter Drew Shelton
Twist Box

Feb 1 1st Sat
Place Randy & Dolly
Brewer

Feb 18 CTWA Meeting
Presenter TBD

Mar 1 1st Sat
Place TBD

Mar 18 CTWA Meeting
Presenter TBD

April 5 1st Sat
Place TBD

April 15 CTWA Meeting
Presenter TBD

Classified Ads

Nova 1500 Lathe, 16" swing + rotating headstock,
 Leeson DC motor and controller: \$600 (the lathe is mounted on a very heavy and sturdy stand)
 Delta Bandsaw, closed stand with riser block, extra new blades: \$450
 Tormek wet sharpening system w/ many jigs: \$250
 Stewart System Tools, Boring bar, Face plates, Vacuum chuck system, more.
 Contact:
 Larry Mart
 337 Portsmouth Drive
 Georgetown, TX 78633
 512-863-6399
 ldmart@suddenlink.net

Jet wood lathe 16X42 like new, model # JWL 1642EVS
 115 volts 1 phase variable speed about 5 years old hardly used.
 asking \$1500 cash you pick up.
 New cost \$2500+tax.
 contact: Bob Brumage
 PLEASE CALL
 Ph. 512 266-6952

First Saturday

First Saturday Coordinator **Len Brissette** hosted our first event for 2014 at his shop on a bright, sunshiny January 4, with twenty or more folks showing up for donuts, coffee, trading tall tales, and a little bit of turning. Whether it was Holiday Hangover or the fact that no one wanted to haul their mini-lathe from the end of the cul-de-sac to Len's shop, it was a while before we got any lathes going, and no one wanted to try out Len's Oneway. Finally, there was enough whining that several folks hauled minis in and some turning took place. There were also mechanical problems to solve, with both **Greg Vest** and **Craig Timmerman**

bringing in tail stocks that were no longer functional. There were, of course, as many proposed solutions as there were kibitzers and at least one or two of the suggestions may have been useful. Craig's problem, he thought, was that the quill drive was stuck. After much consternation and the efforts of **Jim Spano**, the piece was disassembled. Have you ever seen a pile of powdered threads? Yeah, that was the problem. He needs new parts. When the turning and kibitzing and coffee were done, and Len had gotten rid of some of his stash of of turning wood, nine folks went to Moonies for some good hamburgers.

Thanks, Len, for hosting us.



The Chip Pile

Central Texas Woodturners Association
A chapter of the American Association of Woodturners

Hilda V. Carpenter
560 Moss Rose Lane
Driftwood, TX 78619

To:

Meeting Location

The CTWA meets at American YouthWorks, 1901 East Ben White Boulevard (Texas 71) in south Austin. The building is on the south side of Ben White, just east of Interstate 35. The best entry is off Woodward Street, just south of a little strip center. You enter an alleyway into a lighted parking lot. We will enter through the back door. As you drive in, you will see a truck dock in the back of the building with a big roll-up white door. The entryway is just to the right of the truck dock. Folks coming from the north may want to exit I-35 at Woodward and proceed south on Woodward across Ben White.

