



The Chip Pile



The Newsletter of the Central Texas Woodturners Association

Austin, Texas

A Chapter of the American Association of Woodturners

November 19, 2013 Meeting
Last Minute Christmas Turnings
2014 Officer Vote
 7:00 - 9:00 PM
 American YouthWorks - Austin, Texas
 1901 East SH 71
 (about 1/4 mile east of I-35 on south side of SH 71)

Christmas Party
 Clyde & Pat Little
 14307 Geronimo
 Volente, TX 78601
 512-413-6931
 Dec 14th 9 am - 3 pm

President's Shop

Another year in the life of CTWA is now almost done, our twenty-fifth as one of the first AAW affiliate clubs. As always, we accomplished most of our goals for the year and fell short on a few of them. We have one more regular meeting and our Christmas party to wrap up another successful year.

The Cindy Drozda demonstrations and hands-on classes are now done and the consensus seems to be that they were a success. We were able to accommodate everyone who wanted to get into a class. The turnout for Cindy's demos on Saturday wasn't as large as we had hoped, and only about seventy per cent of those who indicated they would attend actually did so. They missed a good, instructive session. Before I leave that topic, there are several folks that deserve special thanks for the extraordinary effort they put in to make those events

a success. As always, we are indebted to **Pat and Clyde Little** for hosting the event and the instructor for five-days. Thanks to **Stacey Hager** for all the effort he put into lining things up with Cindy. The hard work of keeping track of all the classes and the enrollees, making the schedule work, and collecting all the money was due to the efforts of **Drew Shelton**. The always involved and contributing **Jim Spano** did way more than we have a right to expect in videotaping all four days of classes as well as the full day of demos. That is more time on his feet than I could have survived. Thanks to those who donated their lathes for students who couldn't supply their own and to those of you who readily volunteered to assist when needed. Thanks to **Len Brissette** for filming for Jim during the final intensive. Finally, thanks to **Johnny Perales**, who came and opened up and got things set up for us on his day off and when it really wasn't convenient for him.

For those of you who are newer members, by tradition, we don't have a regular meeting or First Saturday in December. Instead, we have a party, scheduled this year for December 14 at **Pat and Clyde Little's** place. There will be First Saturday style turning and socializing until about noon when we gather for a pot luck meal, with meat and drinks supplied by the club. Pat will be circulating a sign-up sheet at the meeting. Spouses are welcome and encouraged. After the meal, we have a gift exchange. The gifts are turned items, and they can be stolen a couple of times, which guarantees a great deal of merriment. Everyone

is encouraged to bring a piece for the exchange. You don't have to be an expert turner. Just bring a piece that represents the best work you are capable of. Oh, and the Chip Pile editor gets a vacation in December as well, so don't look for another issue until January.

It has been a privilege to serve as your President this year, although I must admit that it took a good deal more time than I expected it to. There are many folks who made my job much easier. Rather than try to fit those thanks into this epistle, I will beg Hilda's indulgence and submit a farewell letter in the January issue.

For now, thanks to all of you and enjoy the upcoming holiday season with friends and family.

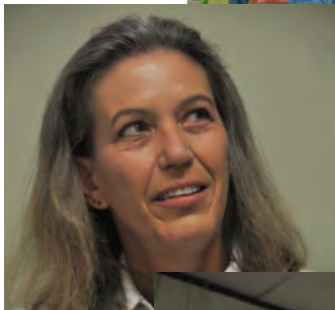
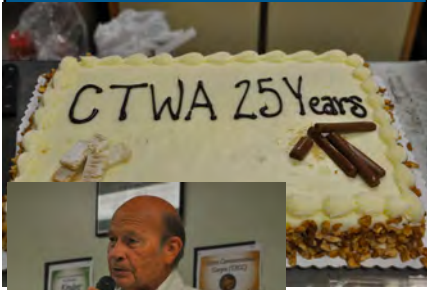
Charlie Kay

Monthly Features

2014 Officer Candidates, p. 10
Bring Back Raffle, p. 8-9
Business Meeting, p. 2
Calendar, p. 14
Classified Ads, p. 11
Editor's "Turn", p. 4
Feature Presenter, p. 2
First Saturday, p. 4-5
Instant Gallery, p. 7-8
Map, p. 16
Membership Information, p. 9
Member's in the News, p. 3
Officers, p. 10
Photo Credits, p. 3
President's Shop, p. 1
Random Ruminations, p. 6
Upcoming Demo's./Classes p. 3
Volunteer your Shop, p. 9
Volunteer Instructors, p. 9
Extra: Chucking Bowls, p. 11

The American Association of Woodturners is "Dedicated to Providing Education, Information and Organization to Those Interested in Woodturning." In keeping with the standards of our National Organization, the Central Texas Woodturners Association hereby gives permission for all other woodturning chapters, organizations, magazines and newspapers to use any materials contained herein for the benefit of all woodturners everywhere. We ask that credit be given for the source of the material.

Demonstration October 2013
25th CTWA Anniversary
Meet our Original Members



The evening was full of celebration and tales from the original members of CTWA. **James Johnson**, now with the Hill Country Turners, Kerville, TX led of a panel. James talked about his home-made lathe crashing on the side of the road and early tools that he made or used. When James started turning, there were no books or schools to teach turning techniques, so he was “taught by God and mistakes.” It wasn’t until 1983 that he had what he termed a “good lathe.” He made gouges on his table saw using a carborandum blade. **Bill Hammond** started turning in 1947 when he took an elective in college. When he left the Army in 1954, he bought a Delta lathe from his great uncle. He made candle holders and sold them for \$1/pair. Bill went from turning larger projects to turning very small projects. His most famous

Keeping Austin Turning Since 1988

being the “Pregnant Goblet” so named for the tiny goblet that was hidden in the stem of the “mom” goblet. Bill’s daughter, **Carolyn**, was part of woodworkers at Paxton. She remembers calling out, “Daddy, look I made sawdust curlie-ques!” **Joe Kirk** rounded out the panel by remembering that about 10 years ago he gave a demonstration to the club on bottle stopper turning. Joe had a piece of the totem pole that included a 15” diameter spindle with a 4” hole in the middle to mount on the pole. In 1986 he bought his first lathe and found some carbon steel tools that he bought for \$40—he says he got a good deal on them because the store couldn’t sell them. Joe and Bill were in the 1st grade together, so they shared a lot of memories together. His first turning was a telephone (quite impressive). Other club members shared their first turnings.



The members also donated items for the “Help Clifford Help Kids” auction. Below is a small sampling, thanks to **Stephen Van Gee, Drew Shelton, Jim McKinney, Bill Hammond, Jim Philpott, Steve Green, John Parker, Bob Duncan, Jim Brinkman, John Besberka, Craig Timmerman, Charlie Kay, Jim Spano, Vaden**



Morhmann, Jimmy Tolly, Johnny and Marcia Tolly for donating wares



to this event. Not all the photos are included in this Chip Pile due to limited space. American Youth Works is a proud sponsor of CTWA and provides the wonderful meeting space we have for each months’ meetings, plus the occasional Saturday demonstration, such as Cindy Drozda’s.

It is important to thank those original members, including **S. Gary Roberts**, who started it all. Gary attended the first AAW symposium and immediately returned to Austin to start CTWA. Unfortunately Gary was unable to attend the festivities, but we recognized his contributions in his absence.

Special thanks to **Stacey Hager** for arranging the presenters and the evening’s festivities. Also thank you to **Betty Hager** for organizing all the food contributions. Here’s to another 25 years of CTWA!

Upcoming Demo's & Classes

Nov. 19th:

Last Minute Turned Gifts: Topics and presenters to be announced.

DECEMBER CHRISTMAS PARTY—December 14

**!!!Christmas Party !!!
Remember to:
Turn a gift to share
Sign up for the pot luck!
Come have fun turning in
the morning!**

Members In the News

Craig Timmerman will be showing/selling his work at the Armadillo Christmas Bazaar from Dec 17-24. The Armadillo Christmas Bazaar is held at the Palmer Events Center in Austin. It is open from 11-11 everyday and features live music and art from 150 artists.

October 31, **Marcia and Johnny Tolly** travelled up to the Ft. Worth club to give a duo demonstration for the members of the North Texas Woodturners. There were 60+ people in attendance during the monthly meeting. Johnny covered all aspects of personal safety requirements.

Johnny then proceeded with his demonstration on how he makes the Thin Disks for Christmas Ornaments. Johnny showed how

he cuts the wood to get the most out of the wood before going to the lathe. Next, he demonstrated how he turns the first side using the friction drive method, including sanding.

He then talked about using a vacuum system for those that have a vacuum system. Johnny then used his alternate method using a face plate with double sided tape to hold the disk to turn and finishing the opposite side. Johnny then handed the demonstration over to Marcia who explained the process of pyrography. Marcia described the tools used and procedures for laying out different designs. She showed the cuts or burns used to develop the patterns on the wood. Rounds of questions were asked and she explained all to the satisfaction of the North Texas wood turners. A thin-turned Christmas Ornament was presented to the club for their auction. The club enjoyed the duo demonstrations. On November 14 Johnny and Marcia will travel over to Kerrville, TX where they will again be doing the duo demonstration on the Thin Disk Christmas Ornaments for the Hill Country Turning Club.

Jimmy Tolly and Steve Green both participated at Wesley Gallery's one-day art show on Saturday, November 2.

Business Meeting

Charlie Kay recognized our visitors, **Patty Dubon** and **Martin Thomen**. He then called on Pat Little to present the slate of nominated officers to be elected in next month's meeting: President: **Pat Little**
Past President: **Charles Kay**
President Elect: **Jay Littlefield**
Program Chair: **Stacey Hager**

Secretary/Newsletter: **Hilda Carpenter**
Treasurer: **Ed Roberts**
Librarian: **Stephen Van Gee**
Membership Chair: **Blair Feller**

Charlie thanked **Betty Hager** for arranging the food for the 25th celebration. He recognized the many people who contributed to AWY's annual fund raiser, "Help Clifford Help Kids."

Drew Shelton described the process for registering to attend the **Cindy Drozda** classes, he needs the money tonight for the interested parties to be considered, since there were more people signed up than are spaces available. Once he has all the registrants' money, he will draw names from a hat to select attendees. Those not chosen for the classes will have their money returned.

The annual Christmas party will be the 2nd Saturday of December (12/14/2013) at **Pat and Clyde Little's** lovely home on Lake Travis. Charlie encourages everyone to come and be sure to bring a turning to swap at the party. The morning will include a 1st Saturday-like get-together, followed by lunch and the gift exchange.

Charlie turned the meeting over to our distinguished panel, **James Johnson, Bill Hammond, Carolyn Hammond and Joe Kirk**. There were 53 people in attendance.

Photos
Photographs for this month's **Chip Pile** were provided by **Drew Shelton, Charlie Kay and Hilda Carpenter**. If you have digital photos that you would like to have considered for use in the newsletter. Send them to the Editor at hildac@mac.com.

Editor's "Turn"

As a professor in a major university, I saw all kinds of teachers. Some of those "teachers" were actually students, some of the professors really could not teach very well. What is a teacher anyway? I find that the best teachers are those who can "do" AND "teach" AND "inspire" a person to achieve some part of their own unique potential. When a teacher who can perform all three actions, do, teach and inspire—that teacher is a rare bird indeed (as my Grandmother would say). I found Cindy Drozda to be one of those rare birds. After two exhausting days I was so grateful for her time and talent.

In woodturning we often see wood with our hands and fingers. Yet, most teachers want to take the tool away from the student, demonstrate the skill themselves, then return the tool to the student. During the class, Cindy would actually guide my hands to replicate what she could do with the tool touching the spinning wood. In other words, Cindy had the gift of allowing me to learn by "seeing through her hands into my own." I experientially learned from her how to have tool control! I was inspired, so much so that I came home from the 2 days and have been turning every day for hours. As Charlie Kay says in his "Random Ruminations" found in this newsletter, Cindy is a remarkable teacher. My turning is much improved, and as a result, I'm late in getting this newsletter out by the 9th deadline to Aleta Wallace. I'm hoping that as woodturners yourself, you'll forgive me for my renewed passion that resulted in getting this to you late!

Keep turnin' it on!
Hilda Carpenter, Editor

First Saturday

November's first Saturday included a large turn-out of members for Cindy Drozda's demonstration. Cindy showed several of her famous techniques to the pleased crowd. Making "v" grooves with



her spindle gouge, then turning



those v-grooves into beads and coves, eventually creating her trademark finial shape. Next she



demonstrated turning a bowl out



of burl wood, coloring techniques, jam chucking to finish the bottom of the bowl.

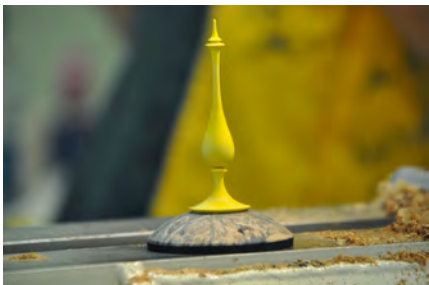


Drozda Demo Con't

Then she placed the top onto another jam chuck to place the



finial on the top and smooth out the curves, resulting in a pleas-



ing line for the lid to fit on top of the box. Showing the depth



of her talent, she then turned on "non-traditional" wood by making a box out of a seed pod.



She cuts the pod into 2 parts, the lid and the bowl. Then fitting the lid on the bottom, reverse



chucking the lid (using a jam chuck) inserts a different material, in this case wood, into the top to turn a finial. The bottom

of the lidded bowl is turned in the typical fashion, resulting in an unusual application of lid-



ded vessel with a finial. Cindy brought along examples of her



fine woodturnings! CTWA was honored to host **Cindy Drozda**, and thanks her for her time, her efforts and her excellent demonstration.

Random Ruminations:
“A Solitary and Collegial Craft”
BY
Charles Kay

It is common, I think, to reflect on the past as another year nears its end. In my case, that tendency has been enhanced a bit this year by the fact that I am ending my term in the leadership of our organization. It is also influenced by my interaction with **Cindy Drozda** in the last week or so.

Cindy was last here in 2006, when she taught classes in my shop in Ruby Ranch. We had one one-day class and I was in a three-day class. I had turned a few boxes and had made one in a class with **Stuart Batty**, but I wasn't hooked on them. By the time I was done with her class, I knew that I would be turning more boxes. After the class, I turned a few finial boxes, but I was far more interested in boxes with inlays and decorated lids and with the simpler lines that I prefer.

In addition to attending Cindy's demonstrations on Saturday, I was present for at least half a day of each of her four classroom days. I was struck by a number of observations. For one thing, her methods have evolved quite a lot from those she used seven years ago. My own methods have diverged from what she had taught me, but it was interesting that hers had as well. As I watched her teaching and assisting students, I was struck that I knew how to do all the things that I saw her demonstrating. Many of those steps I had learned from her, of course, but others were ones she hadn't used seven years ago, but that we had both figured out since and were doing the same way. Still other techniques that she had added, I had figured out another way to do that was different but equally effective, yet another demonstration of the fact that there are many ways of doing anything that we do on the lathe.

Cindy is a remarkable teacher, one of the three best I have studied under. That takes a special talent and devotion to the craft of teaching. While I know how to do all the things she was teaching and am pretty skilled at them, I wouldn't make a good teacher. I am not a good enough student of the craft to clearly be able to articulate the fundamentals involved and, perhaps more important, I don't have the patience required to be a good teacher. Yet again, I marvel at the different talents that we all are born with. Most of us are naturally good at certain things but not so good at many others; however, get a group of us together and often we have at least one of the group that has a special talent to cover most any need.

That leads directly to my other thought. As we were completing our clean-up at the Little's shop on Monday, Cindy remarked to me on how much she enjoyed working with our club. She had said the same things when I first approached her at SWAT last year about coming to CTWA again. She explained herself by saying that as a group we were so cooperative with and supportive of one another, something she doesn't always see in woodturning clubs. That is something I have remarked on in my sixteen years with this group and something less common than one would hope for in most organizations.

All of this suits me well. As one who cherishes solitude and my own thoughts, woodturning offers a solitary pursuit that I can totally lose myself in. However, I also value the collegial opportunities that our regular get togethers afford and I cherish the fact that it has been my experience that woodturners will show you how to do anything they know how to do.

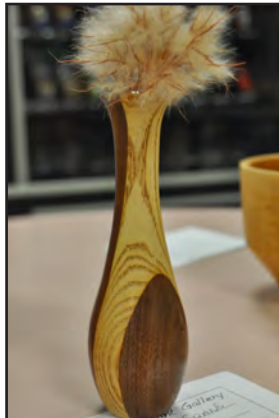
Charlie Kay

October Gallery

Jimmy Tolly (8)



Jim Spano (2)



James Johnson



Randy Brewer (4)



October Gallery

Bob Duncan



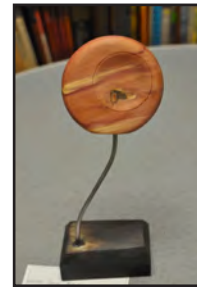
Sandy Peck: Martin Thomen



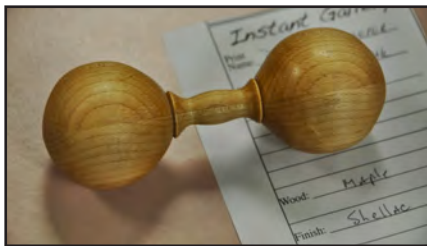
Randy Brewer



Greg Vest: Jim Spano



Dwight Schaeper



??

Cortland Hunt



Bob Duncan: Roger Gardner



Suzi Parker: Johnny Tolly



Jimmy Tolly (2)

Bring Back Raffle



Vaden Mohrmann: Charlie Kay



John Parker: Patty Duban



Bring Back Raffle

Greg Vest: Jim Spano



REMEMBER TO RETURN THE FAVOR, if you won—bring back next month!!

Membership in CTWA

We welcome NEW MEMBERS to join our band of merry turners anytime. An interest in woodturning is the only requirement. Dues are \$35.00 per year, prorated to \$3.00/month for new members. CTWA members are also encouraged to join the American Association of Woodturners, AAW. Those dues are \$43 online membership only, \$53.00 for individuals and \$58 for families. Your membership includes the AAW magazine, American Woodturner, a first-class quarterly magazine full of woodturning articles, tips and ideas with color illustration of the world's master turners' techniques. With our membership, whether you are experienced or a novice, we will teach you, or learn from you, and build long-lasting friendships based on a common kinship of matching wood, metal, machine and man, or woman as the case may be.

Volunteer Your Shop for First Saturday!

1. It doesn't need to be fancy, or big.
2. We'll bring the lathes.
3. You make the coffee.
4. We'll bring the donuts.
5. Have enough room for at least 1-2 turners (easy in the summer).
6. Let Len Brissette lbrissette@austin.rr.com know! Or email the editor.

Volunteer Instructors

SOUTH

- Bill Hammack** 512.282.0832
tops tiny turnings
- Stacey Hager** 512.282.1036
basics, spindles, sharpening, hollow vessels
- Johnny Tolly** 512.858.4471
basics, open segmented
- Jimmy Tolly** 512.894.0686
basics, platters
- Craig Timmerman** 512.288.3598
basics, square turning, hollow vessels
- Charlie Kay** ckayda@gmail.com
boxes & bottle stoppers
512.636.3492
- H. O. Evans** 512.282.2830
segmented turnings
- Hilda Carpenter** 512-395-7782
Airbrushing, tool handles
- Jack Besperka** 512.261.4682
decoration & finishing

NORTH

- Rusty Myers** 512.218.1606
basics, boxes, kitchenware
- Judy Williams** 512.293.7479
spindles
- Jim Spano** 512.835.5023
novelty items, tops, shop gadgets
- Len Brissette** 512.258.4004
bowls, platters, sharpening

ROUND ROCK

- Larry Walrath** 512.255.5379
big vessels, bowls, platters
- Ed Roberts** 512.255.3294
basics platters

LOCKHART/SAN MARCOS

- David Dick** 512.357.6517
basics, spindles, architectural

2013 Officers

President

Charles Kay
512-636-3492
ckayda@gmail.com

President Elect

Pat Little
512-423-0508
Patlittle46@yahoo.com

Program Chairman

Stacey Hager
512-282-1036
StaceyHager@hotmail.com

Secretary/Newsletter Editor

Hilda Carpenter
512.395-7782
hildac@mac.com

Treasurer

Ed Roberts
512.255.3294
eroberts6@juno.com

Membership Chairman

Chris Van Peski
512-303-1590
chrisvanpeski@gmail.com

Webmaster

Aleta Wallace
aleta.wallace@gmail.com
512-589-8949

Audio/Visual Coordinator

Greg Vest
512-736-2715
artwoodworker@verizon.net

First Saturday Coordinator

Len Brissette
512-423-3625
mesquite@austin.rr.com

Librarian

Stephen Van Gee
svangee@austin.rr.com

CTWA Web Site

www.ctwa.org

Editorial Information

This newsletter is by and for members. The Editor welcomes any written materials and will provide assistance with getting your information into publishable form if you want. DEADLINE IS THE FIRST MONDAY OF THE MONTH. Contact me with your ideas and drafts by phone at 512.395-7782, by E-mail at hildac@mac.com or mail them to:

The Chip Pile
c/o Hilda Carpenter
560 Moss Rose Lane
Driftwood, TX 78619

Nomination Committee News

This slate will be presented at the November meeting when the members will vote on each officer

Please ask the current officers if you want to know what the individual duties of each office include.

2014 Proposed Officer Slate

President: **Pat Little**
Past President: **Charles Kay**
President Elect: **Jay Littlefield**
Program Chair: **Drew Shelton***
Secretary/Newsletter: **Hilda Carpenter**
Treasurer: **Ed Roberts**
Librarian: **Stephen Van Gee**
Membership Chair: **Blair Feller**

Volunteer positions
Webmaster: **Aleta Wallace**
A/V Coordinator: **Greg Vest**
1st Saturday Coordinator: **Len Brissette**

* Drew accepted the program chair position as **Stacey Hager** declined. This is a change from what was presented at last month's meeting.

Calendar

The calendar listings are an attempt to keep you up to date on upcoming CTWA events, as well as other events of particular interest to woodturners. All regular 3rd Tuesday CTWA Meetings are at American Youthworks. Check Website for latest information.

All 1st Saturdays are from 9 am-noon. All meetings are 7 PM to 9 PM

Events & Dates subject to change, watch for emails or website notifications!

Nov 19 CTWA Meeting
Presenter: TBD
Last Minute Turned Gifts

December Christmas Party
Dec 14
No 1st Saturday

Jan 4 1st Sat
Place TBD

Jan 21 CTWA Meeting
Presenter TBD

Feb 1 1st Sat
Place TBD

Feb 18 CTWA Meeting
Presenter TBD

Mar 1 1st Sat
Place TBD

Mar 18 CTWA Meeting
Presenter TBD

April 5 1st Sat
Place TBD

April 15 CTWA Meeting
Presenter TBD

Classified Ads

Nova 1500 Lathe, 16" swing + rotating headstock, Leeson DC motor and controller: \$600 (the lathe is mounted on a very heavy and sturdy stand)

Delta Bandsaw, closed stand with riser block, extra new blades: \$450

Tormek wet sharpening system w/many jigs: \$250

Stewart System Tools, Boring bar, Face plates, Vacuum chuck system, more.

Contact:

Larry Mart

337 Portsmouth Drive
Georgetown, TX 78633
512-863-6399

ldmart@suddenlink.net

Jet wood lathe 16X42 like new, model # JWL 1642EVS

115 volts 1 phase variable speed about 5 years old hardly used.

asking \$1500 cash you pick up.

New cost \$2500+tax.

contact: Bob Brumage

PLEASE CALL

Ph. 512 266-6952

Chucking a Bowl

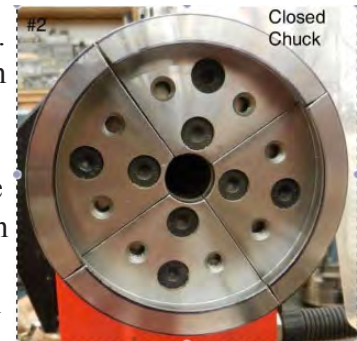
This is from our former member, Frank Miller:

Even though I am behind the camera at demos, I do pay attention to the demonstration. There is usually not a lot of detail given to the best way to chuck a bowl because of all the other information that needs to be presented. I thought the beginning turners could use a more detailed discussion of why a chuck has problems holding some bowls while another bowl of the same wood puts up with more abuse without coming loose. I hope to show you how you can greatly increase the holding power of your chuck and avoid some of the flying bowls.



The Super Nova chuck comes standard with 50mm jaws. 100mm jaws are available. 50mm is approximately 2" in diameter which is a circumference of about 6.28". 100mm is approximately 4" in diameter which is a circumference of about 12.65". A 1-pound force of the chuck is doubled with 100mm jaws over 50mm jaws. This only happens when the 100mm jaws are set at 100mm. The jaws form a circle at 100mm as seen in #1.

In #2, the jaws are completely closed. The outside of the jaws touch only at the tips of the jaws and the inside touches on the center of the jaws. The jaw pressure will decrease by 30% or so as you see in #2.



As the jaws approach maximum, the area where the jaws touch will decrease more and the pressure points on the jaws are reversed as seen in picture #3. This can be seen by the black lines that mark a circle in #3.



When you need to drive the chuck in reverse, it is a good idea to lock the chuck with setscrews. The standard screws that come with chucks are steel tips and if the steel tips contact threads, it will crush the threads. Some lathes have enough thread relief so the setscrews contact the spindle instead the threads. The setscrews can also be replaced with brass tip or nylon tip setscrews. These are available from Reid Supply Company at Reidsupply.com. The current catalog has them on page 273 and available both in inch and metric.

- Frank Miller

The Chip Pile

Central Texas Woodturners Association
A chapter of the American Association of Woodturners

Hilda V. Carpenter
560 Moss Rose Lane
Driftwood, TX 78619

To:

Meeting Location

The CTWA meets at American YouthWorks, 1901 East Ben White Boulevard (Texas 71) in south Austin. The building is on the south side of Ben White, just east of Interstate 35. The best entry is off Woodward Street, just south of a little strip center. You enter an alleyway into a lighted parking lot. We will enter through the back door. As you drive in, you will see a truck dock in the back of the building with a big roll-up white door. The entryway is just to the right of the truck dock. Folks coming from the north may want to exit I-35 at Woodward and proceed south on Woodward across Ben White.

