

The Chip Pile

The Newsletter of the Central Texas Woodturners Association

Austin, Texas

A Chapter of the American Association of Woodturners

April Meeting
April 16, 2013
Johnny Tolly: Xmas Discs
 7:00 - 9:00 PM
 American YouthWorks - Austin, Texas
 1901 East SH 71
 (about 1/4 mile east of I-35 on south side of SH 71)

May First Saturday
 May 4
 Drew Shelton's Shop

President's Shop

Our turning year continues to progress well. We have had a number of folks sharing wood with the club at our last couple of meetings. We have had some interesting demonstrations by members of our club, including last month's tag team demonstration by **Johnny and Marcia Tolly**. Our thanks to them for a fine job.

What we didn't get this month was a First Saturday Shop Crawl, as we used the First Saturday weekend to conduct another Beginners Turning Class at Clyde and Pat Little's fine shop in Volente. We had seven turners with experience levels ranging from zero on up. We had a nice turnout of experienced club members who gave up their weekend to serve as assistants in the learning process. **Len Brissette** led the class through bowl turning on Saturday, and I demonstrated turning a box on Sunday. The able assistants were **Jim Spano, Clyde Little, Ed Roberts, Jerry Whiteaker, Bob Duncan, Jim Brinkman, and Craig Timmerman**. I didn't jot down names, so I hope I didn't forget anyone. Many thanks to all of you for helping us in this effort. Several folks need to be called out for extra thanks: **Pat and Clyde Little** for again opening their home and shop to a horde of woodturners, **Jim Spano** and **Clyde** for the immense amount of effort they put into designing and organizing this event and getting everyone on the same page. It was a great group effort and I think that the new turners benefitted from the classes taught by beginning teachers. Now all of you need to encourage those folks to keep practicing and to bring their efforts to Show

and Tell.

Speaking of practice, I would like to again encourage folks to come to the First Saturdays. That is an excellent place to ask for help. If you are having trouble with something in your turning, bring the piece along and ask one of us to help you figure out how to fix the problem you are having. There are usually at least four or five lathes available, although they don't all get unloaded. I know that the old guys stand around and bat the breeze, drink coffee, and eat too many Round Rock donuts, but we are all ready to head to a lathe and help you troubleshoot your difficulties. Just bring a piece and ask someone to help. I suspect that some of our newer members may be intimidated by how the older members rag on one another over catches and other mishaps and think, "Wow, what will the say if I try?" Relax. We aren't going to do that to novice turners. When you get good enough, though, look out!

One of the questions that came up in our group discussion at the close of the classes had to do with guidance for how to choose and where to get tools. **Craig Timmerman** has agreed to put together an article with his suggestions for new tools that are high quality and won't break the bank. If you have been turning awhile, you probably have a number of fine used but still serviceable tools that you would part with for a reasonable price to our newer turners. It's just that you saw something newer and better that you knew would make you a better turner and bought it. So, our plan is to have a Tool Swap at the June First Saturday. Look through the drawer where you have all those tools that you don't use any more, put a cheap price on them and bring them along in June.

We have checked one more item off of our club to-do list for the year. I had asked President-Elect **Pat Little** to head an audit committee to audit our books. She was joined by **Len Brissette** and they have met with Treasurer **Ed Roberts** and completed CTWA's first financial audit. The books are in order and the committee has presented a report with their findings and recommendations for ways to make our accounting clearer. A copy of the report will be filed with Newsletters and copies of Board meeting Minutes in the bookcase at the meeting site. Feel free to read it. One recommendation is for an annual audit at the end of each club year, led by the President-Elect, and that will be

implemented.

I am way late getting this to Hilda for the newsletter. I had forgotten that this is one of those month's when the club meeting comes up a week earlier than you think that it should. So that will do it for now.

See you at the meeting.

Charlie Kay

Monthly Features

- Beads of Courage, p. 7**
- Bring Back Raffle, p. 9**
- Business Meeting, p. 7**
- Calendar, p. 5**
- Classified Ads, p. n/a**
- Editor's "Turn", p. 6**
- Feature Presenter, p. 2-3**
- First Saturday, p. N/A**
- Instant Gallery, p. 8-9**
- Map, p. 12**
- Membership Information, p. 10**
- Member's in the News, p. 6**
- Officers, p. 5**
- Photo Credits, p. 3**
- President's Challenge, p. 3 & 10**
- President's Shop, p. 1**
- Random Ruminations, p. 4**
- SWAT p. 7**
- Upcoming Demo's p. 3**
- Volunteer your Shop, p. 10**
- Volunteer Instructors, p. 5**

The American Association of Woodturners is "Dedicated to Providing Education, Information and Organization to Those Interested in Woodturning." In keeping with the standards of our National Organization, the Central Texas Woodturners Association hereby gives permission for all other woodturning chapters, organizations, magazines and newspapers to use any materials contained herein for the benefit of all woodturners everywhere. We ask that credit be given for the source of the material.

Demonstration February 2013
Johnny & Marcia Tolly

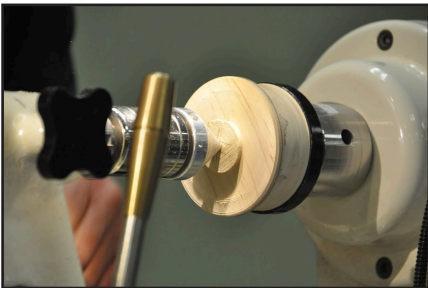
Partners for life, Johnny and Marcia Tolly provided a great demo for making Christmas “discs”. Johnny’s por-



tion of the demonstration included



Keeping Austin Turning Since 1988



using the Apprentice Mini Chuck, Hunter carbide tools. He further demonstrated turning off the tenon using a vacuum chuck and both double sided tape for those who may not have a



vacuum system. Johnny strongly sug-

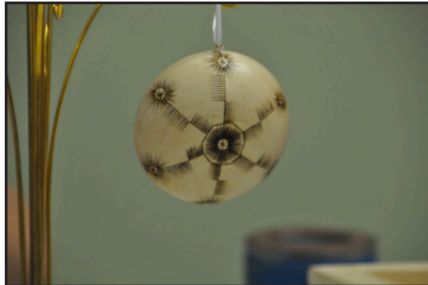


gests keeping the tail stock up until the last nub needs to be turned off. Using a 1/8 drill bit, he drills a small hole on

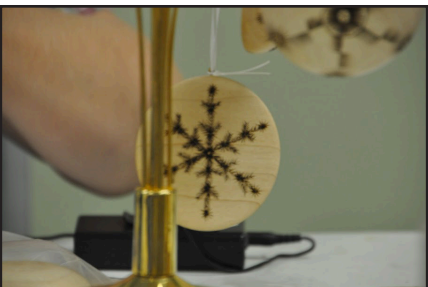


the circumference of the disc. He sands both sides of the piece to create a canvas for Marcia to do her pyrography

magic. He sometimes makes concave



forms. Without doubt, Marcia made her art look incredibly easy. A snowflake has 6 points. Using freehand, she



burned the form into the disc. She also brought other examples of her artistic talents. For her pyrography, she uses a Detail Master 3 because it heats up and

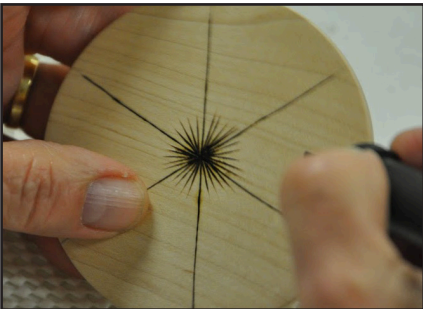


Demonstration March 2013:

Johnny & Marcia Tolly



cools down quickly. The nibs are typically writing or blade, depending on



the image she creates. She cleans the

tips with a wire brush. Strong suggestions: keep the angle so the smoke and heat will go away from you. Pull each stroke toward you for a straighter line. She used a writing tip for the images of dogs and children. Using alcohol she removes any burning edges.

Charlie suggested another President's challenge to create Christmas ornaments using their techniques.

Upcoming Demo's & Classes

Intermediate class May 11th & 12th:

May 11 Bowl Instruction by Craig Timmerman

May 12 Box Instruction, leader: tba

Goblets will NOT be done at this time.

We will be having a tool grinding session for class attendees at 1st Saturday, May 4th held at Drew Shelton shop, for turners who need help with your grinds. Base on past experiences, we feel that valuable lathe time will be lost if a tool grinding session is done at the class location.

If you are unable to attend, let Jim Spano know ASAP so we can accommodate turners on the waiting list.

April Demonstrator

Tom Enloe

Tom travels from Houston to demonstrate his "Problem solving techniques: A demo of a unique way to mount wood for goblets, pool cues, etc. with a step-by-step approach to turning long thin turnings."

May Demonstrator Janice Levi

The title of the presentation is "Just Finials."

All too often a turner creates a beautiful box or Christmas ornament from exotic wood or highly figured native wood, then adds a finial top or icicle that distracts from the turning, rather

than complementing it. This demonstration is aimed at helping turners select a style of finial that will aesthetically enhance their beautiful wood box or ornament. We will look at silhouette cut-outs of paper finials, boxes and ornaments and select those finial designs that seem to be most pleasing in appearance. There will be a brief discussion of proportion and the Golden Mean. We will also discuss wood color, density, and grain to consider when choosing finial material. And, of course, not all finials must be



made of wood. Sometimes selecting Corian or acrylic can result in a beautiful finial that complements the overall design. There will also be some tips on successfully turning a delicate finial.

President's Challenge

Last month's spin-top box challenge was met with many unique ideas. **Drew Shelton, Dwight Schaefer, Suzi Parker and Johnny Tolly** won this challenge.

This month you are invited to submit your representations of Johnny & Marcia's Christmas discs.

Photos

Photographs for this month's **Chip Pile** were provided by **Drew Shelton**. If you have digital photos that you would like to have considered for use in the newsletter. Send them to the Editor at hildac@mac.com.

Random Ruminations:

“Remaking Oneself”

BY

Hilda Carpenter writing in for Charles Kay

For years I spent life in the fast lane of the Silicon Valley. I was considered successful. Despite the fact that the speed made me go white-headed early and grinding my teeth to nubs. I learned very valuable lessons about remaking myself. Whether you work in a small, large company or have your own business, it is critical to always keep your options open about how, who and what you are. The choices we make either entrench us into singular thinking, or allow for possibilities to reach our own unique potential.

I coached so many people on this concept. For some, like artistic temperaments, it was easy to get across the idea that they were a canvas that could always be repainted. Other people had more difficulty with this notion of remolding their life's choices. They closed themselves off with their own past and struggled with letting it go. William Bridges wrote a book called, “Transitions”, after his wife died.

The idea of his philosophy is that you cannot have a new beginning without an ending. As a general rule, people hate endings and change. Thus, they remain stuck in the mind's framework of what worked for them in the past. Bridges says that after an ending there is never an immediate new beginning. He says we go through a terrible stage called the neutral zone. We circle back into an ending, gnash in the middle and eventually consider the possibilities of something new. The neutral zone lasts longer for people who cling to the past the way Spring sometimes cycles back into Winter. We know when we are near the new beginning after processing the grief of the ending. I used this model in the hundreds of reorganizations that left people with the shaky feeling of starting something new, with new cohorts or jobs.

Woodturners as a population are people who probably understand this better than most. Leaving the past blow-up behind, the woodturner looks for the next masterpiece in his or her woodturning. The people I've met in our club have come from varied backgrounds and are leaving or left the endings of those careers to enjoy something new. When a demonstrator gives us new ways of doing unique things, or even things I think I do well, I leave the meeting with inspiration to try a new tool, or even the dreaded spin-top box (never did get my finial to stick).

If I find myself in the neutral zone, feeling fuzzy, unsure, or downright scared (like the first time Frank showed me how to use a skew) I know there is a new beginning in my future.

I can think of no better example of someone remaking himself, struggling through the neutral zone than my husband, Steve Green. Now here is a man, diehard geek, who never considered that he might be artistic. Yet, someone told him the other day that he had truly “remade” himself. Long, stressful days are gone now for Steve. He will spend the same amount of hours working in his art as he did griping about the other geeks he worked with for 40 some-odd years.

I believe William Bridges was right. The best new beginnings come out of dark, sad endings. They make it through the rough waters of insecurity in the neutral zone and open up new possibilities to tap our unused potential. If you are feeling a loss, confused, scared or excited, it simply means you are somewhere in those three phases that spiral back upon themselves, the end, the neutral zone, and the new beginning. Go ahead, tap your own unique potential, you just might find a new way of thinking.

Keep on turning,

Hilda Carpenter for Charlie Kay

2013 Officers

President

Charles Kay
512-636-3492
ckayda@gmail.com

President Elect

Pat Little
512-423-0508
Patlittle46@yahoo.com

Program Chairman

Stacey Hager
512-282-1036
StaceyHager@hotmail.com

Secretary/Newsletter Editor

Hilda Carpenter
512.395-7782
hildac@mac.com

Treasurer

Ed Roberts
512.255.3294
eroberts6@juno.com

Membership Chairman

Chris Van Peski
512-303-1590
chrisvanpeski@gmail.com

Webmaster

Aleta Wallace
aleta.wallace@gmail.com
512-589-8949

Audio/Visual Coordinator

Greg Vest
512-736-2715
artwoodworker@verizon.net

First Saturday Coordinator

Len Brissette
512-423-3625
mesquite@austin.rr.com

Librarian

Stephen Van Gee
svangee@austin.rr.com

CTWA Web Site

www.ctwa.org

Editorial Information

This newsletter is by and for members. The Editor welcomes any written materials and will provide assistance with getting your information into publishable form if you want. **DEADLINE IS THE FIRST MONDAY OF THE MONTH.** Contact me with your ideas and drafts by phone at 512.395-7782, by E-mail at hildac@mac.com or mail them to:

The Chip Pile

c/o Hilda Carpenter
560 Moss Rose Lane
Driftwood, TX 78619

Volunteer Instructors

SOUTH

Bill Hammack 512.282.0832

tops tiny turnings

Stacey Hager 512.282.1036

basics, spindles, sharpening, hollow vessels

Johnny Tolly 512.858.4471

basics, open segmented

Jimmy Tolly 512.894.0686

basics, platters

Craig Timmerman 512.288.3598

basics, square turning, hollow vessels

Charlie Kay ckayday@gmail.com

boxes & bottle stoppers

H. O. Evans 512.282.2830

segmented turnings

Hilda Carpenter 512-395-7782

Airbrushing, tool handles

Jack Besperka 512.261.4682

decoration & finishing

NORTH

Rusty Myers 512.218.1606

basics, boxes, kitchenware

Judy Williams 512.293.7479

spindles

Jim Spano 512.835.5023

novelty items, tops, shop gadgets

Len Brissette 512.258.4004

bowls, platters, sharpening

ROUND ROCK

Larry Walrath 512.255.5379

big vessels, bowls, platters

Ed Roberts 512.255.3294

basics platters

LOCKHART/SAN MARCOS

David Dick 512.357.6517

basics, spindles, architectural

Calendar

The calendar listings are an attempt to keep you up to date on upcoming CTWA events, as well as other events of particular interest to woodturners. All regular 3rd Tuesday CTWA Meetings are at American Youthworks. Check Website for latest information.

All 1st Saturdays are from 9 am-noon. All meetings are 7 PM to 9 PM

Events & Dates subject to change, watch for emails or website notifications!

April 16th CTWA Meeting

Presenter: Tom Enloe
Stretching a Goblet

May 4th 1st Saturday

place TBD

May 11-12 Intermediate Class

place: Clyde Little

May 21st CTWA Meeting

Presenter: Janice Levi
Just Finials

June 1st 1st Saturday

Place: TBD

June 18 CTWA Meeting

Presenter: TBD

July 6th 1st Saturday

Place: TBD

July 16 CTWA Meeting

Presenter: TBD

Aug 3 1st Saturday

Place: TBD

Aug 20 CTWA Meeting

Presenter: TBD

Aug 22-25 SWAT Waco, TX

Editor's "Turn"

This month I had a great time making discs for the Christmas ornament President's challenge due in April.

I learned some interesting lessons. First I determined that the Hunter tool Johnny described was not that easy to ensure the disk was flat. So, I brought out my trusty Easy Tool straight-edge and that did the trick! Second, I learned that what Marcia does free hand is no easy task. I tried to burn a simple (ha) snowflake. I never knew until Marcia told us that snowflakes always have 6 sides, fascinating. Well, dutifully I marked out my 6 sides and made a pretty good attempt at getting the 3 lines straight . . . then I discovered how hard it is to create geometric shapes. Let's put it this way, my snowflake pretty much looked like a squished snowflake with strangely abstract formations. So, I did Christmas trees. They were much easier. The trees actually looked like trees. Another problem I discovered was the cheapie drill that I bought from Michaels wouldn't hold the 1/8" drill bit. So I got out my wonderful little drill and made the holes. Again symmetry may not be my strongest suit . . . I had a tendency to angle the drill,

Keeping Austin Turning Since 1988

so some of my holders actually pushed through the disc when I screwed them in. Oops.

Then, I had this brilliant idea to make very thin discs for carving with my NSK dental drill. The problem with very thin discs is they break very easily, especially when I moved the tool rest close up and whacked it—I had a great, flat bowl-looking disc. Hmmm

However, I LOVED the new chuck that Johnny told us about. Man that little chuck can grab that wood! Smaller pieces will be much simpler from now on, I'm sure.

Lastly, I discovered that when I brought up my tail stock to turn off the tenon, I pushed it in so hard that the disc bowed. Hmmm

Well, I have some discs that made it through my learning curve. They certainly are not the quality that Marcia showed, but by Christmas 2020 I might have this mastered!

Keep turnin' it on!
Hilda
Editor

Members In the News

The jury was set to review about 30 artists wishing to join the River Art Group in San Antonio on Saturday, April 1. **Steve Green** presented three candi-

dates to demonstrate his work. He was happy to receive the award for acceptance on April 6 th.

If you are not interested in driving to San Antonio, Steve will have his award-winning art at the upcoming Wimberley Valley Art League on April 27th & 28th at the Blue Hole State Park.

Johnny Tolly presented a \$100 hunter tool at the bring back! This was no ordinary gift, so we made sure to give it away first to afford everyone the opportunity to win! Everyone that bought a ticket anyway!

Business Meeting

Charlie Kay started the meeting by welcoming visitors **Bill Kingsbury and Richard Compton. Clyde Little and Jim Spano** discussed the upcoming beginners' class April 6-7. Jimmy Tolly announced for any people who picked up a defective clock kit can replace that kit with another. Shawn Graham announced the opening of his new business that will teach hand tools, introduction classes, and various uses of these same tools. Shawn asks for anyone who wants to donate tools to let him know. Johnny Tolly has sliced some "Beads of Courage" buttons for anyone who would like to use them in their bowls that will be donated to this worthwhile effort. During the gallery introductions, Bill Kingsbury related how he colored his bowl (see the gallery pictures) with Kool-Aid as the coloring agent.

SWAT is Coming!

SWAT REGISTRATION IS OPEN!

For the latest information regarding the Southwest Association of Turners (SWAT) symposium upcoming in August you can visit their website <http://www.swaturners.org> for a current list of demonstrators, local hotels that provide discounts for attendees, and general descriptions of Waco, TX. The convention center is a great place for this event, since hotels are conveniently located.

I'll repeat what I said last month, "This show is the second largest show in the US (next to AAW symposia). Vendors offer great discounts, the demonstrators are selected from Professional and club turners alike.

You will not leave the symposium without a new trick, or maybe you'll even win the raffle and bring home a nice new lathe."

Johnny Tolly and others have mentioned the Beads of Courage activities and invited all the CTWA woodturners

Beads of Courage

to participate in this worthwhile cause. For more information check out <http://www.beadsofcourage.org>

Several of you have asked about the specifications for the boxes:

In order to hold the beads, turned boxes for the Beads of Courage program need to be about 6 inches in diameter (5 inches minimum), rectangular lidded boxes about 4x6x4 inches. If possible, have Beads of Courage engraved or burned in the lid. Make sure the lids are easily removable. Also, finials should be easy for a small child to grasp and not too elaborate.

If you would rather create or donate beads here is the information from

Beads of Courage:

Program Beads are commercially manufactured due largely to the sheer quantity involved. These beads are the ones that you may have seen on bead guides that correspond to specific events in a child's treatment journey.

Act of Courage Beads are the artist-made glass beads that are given to acknowledge the milestones in a child's treatment journey. This year, we expect to need approximately 100,000 of these handmade beads donated so children can continue to receive one-of-a-kind beads for significant treatment milestones. These beads truly bring the arts to our Arts-in-Medicine mission. Thank you!

What is an Act of Courage Bead? Act of Courage Beads can take almost any form that you would like to make-it's an opportunity for you to let your imagination go! The 3/32" mandrel is preferred but other sizes are also usable.

Special Requirements for Act of Courage Beads: Please have nice 'puckers' on the ends of the beads, sharp edges on the bead holes cut fingers and can not be sent out. Overly frilly bits sticking out may break off and leave sharp edges on the surface, be sure that raised dots have solid connections (no undercuts) and that surface decorations are robust enough to take some knocking about.

We ask that you refrain from using reduction frit or glasses that give a metallic sheen on the surface due to heavy metal issues with these materials. We can't send metallic reduction

surface beads to the kids.

Anneal your beads properly in a kiln to ensure they don't crack. Cracked beads have to go in the waste basket.

Please make sure that the bead release is cleaned out. Beads with the release still inside take more time for our volunteer staff to clean and this tremendously slows down turnaround time to the hospitals.

Polymer Clay Beads are used in many of our programs including Creative Courage Journal, Beads of Courage Program for Siblings, Arts-in-Medicine Workshops and as a Member's Choice bead in the Beads of Courage Program.

Special Requirements for Polymer Clay Beads: Any size or shape is acceptable. The kids love bright colors! Our preferred hole size is 3/32" with no sharp corners, edges, or protrusions that would easily break off. Please remember that they beads are worn and handled by children and should be sturdy enough to stand up to wear and tear.

March Gallery

Steve Green



Johnny Tolly (3 BOC bowls)



Jim Brinkman



Jim Spano



Mac Peterson



Bill Kingsbury



Jim Spano



Charlie Kay



HO Evans



Bill Kingsbury



Charlie Kay



Jim Brinkman



Stacey Hager (all 3 balls)

Aleta Wallace: Jim McKinney

March Gallery

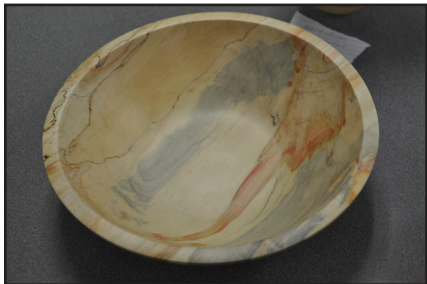
Charlie Kay



Charlie Kay



Jimmy Tolly



Mack Peterson



Bring Back Raffle

Hilda Carpenter:??



Jimmy Tolly: Hilda Carpenter



Jim McKinney: Larry Robinson



No Pictures:

Johnny Tolly (Hunter tool): Clyde Little

Jack Graham (Sea Urchins): Greg Vest

Marcia Tolly (Disc Ornament): Jim Howe

Len Brissette (Vase) Erik Peterson

Bob Duncan (Spintop Box): Suzi Parker

Congratulations if you won a Bring Back. You need to bring back a turning to share next month.

Your turning should represent the level of your turning skill. If you do not have a lathe, or don't feel you have the experience, go to a first Saturday, contact one of our volunteer instructors to help you prepare a Bring Back piece. So buy a ticket, get involved and have fun.

It's the end of the year. Think back & if you still owe a bring back, it's a good time to turn it out, or ask one of the volunteers or officers to help your catch up. You know who you are!

Volunteer Your Shop for First Saturday!

1. It doesn't need to be fancy, or big.
2. We'll bring the lathes.
3. You make the coffee.
4. We'll bring the donuts.
5. Have enough room for at least 1-2 turners (easy in the summer).
6. Let Len Brissette lbrissette@austin.rr.com know! Or email the editor.



Len Brissette

Membership in CTWA

We welcome NEW MEMBERS to join our band of merry turners anytime. An interest in woodturning is the only requirement. Dues are \$35.00 per year, prorated to \$3.00/month for new members. CTWA members are also encouraged to join the American Association of Woodturners, AAW. Those dues are \$38 online membership only, \$48.00 for individuals and \$50 for families. Your membership includes the AAW magazine, American Woodturner, a first-class quarterly magazine full of woodturning articles, tips and ideas with color illustration of the world's master turners' techniques. With our membership, whether you are experienced or a novice, we will teach you, or learn from you, and build long-lasting friendships based on a common kinship of matching wood, metal, machine and man, or woman as the case may be.

Tops Pres. Challenge



Participants: Marcia Tolly, Drew Shelton, Bob Tucek, John & Suzi Parker, Jim Spano, Joe Kirk, Johnny Tolly, Bob Duncan, Dwight Schaefer

Winners:
Drew Shelton, Dwight Schaefer, Suzi Parker, Johnny Tolly

The Chip Pile

Central Texas Woodturners Association
A chapter of the American Association of Woodturners

Hilda V. Carpenter
560 Moss Rose Lane
Driftwood, TX 78619

To:

Meeting Location

The CTWA meets at American YouthWorks, 1901 East Ben White Boulevard (Texas 71) in south Austin. The building is on the south side of Ben White, just east of Interstate 35. The best entry is off Woodward Street, just south of a little strip center. You enter an alleyway into a lighted parking lot. We will enter through the back door. As you drive in, you will see a truck dock in the back of the building with a big roll-up white door. The entryway is just to the right of the truck dock. Folks coming from the north may want to exit I-35 at Woodward and proceed south on Woodward across Ben White.

