

The Chip Pile

The Newsletter of the Central Texas Woodturners Association

Austin, Texas

A Chapter of the American Association of Woodturners

January Meeting

Len Brissette January 15, 2013

7:00 - 9:00 PM

American YouthWorks - Austin, Texas

1901 East SH 71

(about 1/4 mile east of I-35 on south side of SH 71)

First Saturday

January 5

Stacy Hager
9215 Chisholm Lane
9 am - Noon

President's Shop

I have edited this column many times and now find it my responsibility to help us focus on the things that we hope to accomplish as a club over the next year. Here is a partial list.

A number of us have already begun to plan for a spring turning class. We will be providing details as they develop. We have learned things from our two previous efforts and will again be modifying and, we hope, improving our approach. We are trying to arrange two outside demonstrators for weekend demonstrations followed by hands-on classes. We also hope to do a second session in the fall. At this point no arrangements have been

completed, but we will be keeping you informed as we go along. We have sufficient funds in our treasury to continue to make the demonstrations cost-free to club members, although there will be fees for the hands-on sessions. Our new Program Chairman, Stacy Hager, is hard at work lining up demonstrators for our monthly meetings.

We have continued to improve our support for American YouthWorks and I would like to see us with broader participation in providing pieces for their annual fund raiser. I would also like us to make a club effort to provide pieces for the SWAT Beads of Courage effort. Perhaps we can have a club challenge for July for Beads of Courage pieces and if we have enough, try to get them displayed as a group in the Instant Gallery. Give me your thoughts on these and other service projects we might consider. I would also like your thoughts on President's Challenge ideas.

Thanks to all who have agreed to serve as club officers for 2013, and welcome to the new folks who have joined that lead-

ership team, Pat Little, Chris Van Peski, Stephen Van Gee, Hilda Carpenter and Stacey Hager. Feel free to let any or all of us know what you would like to see. I would also encourage more of you to volunteer to help things happen. If we are to continue to be the active vibrant organization that we are, we need to continue to bring new folks into leadership positions. CTWA needs you!

I look forward to seeing us make this another successful year for our club.

Charlie Kay

Monthly Features

- Bring Back Raffle, p. 10
- Business Meeting, p.
- Calendar, p. 5
- Classified Ads, p.
- Christmas Party, p 6
- Editor's "Turn", p. 7
- Feature Presenter, p. 2-3
- First Saturday, p. 11
- Instant Gallery, p. 8-9
- Map, p. 12
- Membership Information, p. 11
- Member's in the News, p. 8
- Officers, p. 5
- Photo Credits, p. 3
- President's Shop, p. 1
- Random Ruminations, p. 4
- Volunteer your Shop, p. 11
- Volunteer Instructors, p. 5

The American Association of Woodturners is "Dedicated to Providing Education, Information and Organization to Those Interested in Woodturning." In keeping with the standards of our National Organization, the Central Texas Woodturners Association hereby gives permission for all other woodturning chapters, organizations, magazines and newspapers to use any materials contained herein for the benefit of all woodturners everywhere. We ask that credit be given for the source of the material.

Demonstration November 2012:

Finishing Roundtable

Steve Green, Johnny Tolly, Marcia Tolly, Jim Spano, Hilda Carpenter provided various types of finishing techniques in a round table for the Club. Steve Green started out by talking about how he finishes his crystal inlaid platters with Wipe-on Poly satin applying



with a paper towel in very light coats (3-4 with a day to harden in between). He also uses EEE and Shellawax, Minwax Gloss. He uses Scotch pads (maroon or white) then wipes off the dust with a Viva paper towel. The members mentioned that there was also a gray pad. These are

Keeping Austin Turning Since 1988

varying grits. A shortcut he uses is to use a sanding mandrel. After all coats are finished, he uses the Deft buffing system to give a wax finish.



Marcia Tolly demonstrated how she uses Deft semi-gloss finish spray. She said to be sure to spray from about 8" from the side to get an even coat.

Johnny Tolly demonstrated Briwax. He keeps the piece on the lathe then uses a paper or shop towel to apply it. He noted that, as with any wax product, it will spot with water.



Johnny and Marcia discussed the differences between Deft spray and Briwax. Marcia says

she doesn't use it because it is tackier longer, whereas the Deft spray dries immediately. If the lacquer clogs the spray nozzle, simply hold the can upside down and spray into a paper bag to clear the opening.



Jimmy Tolly talked about how he uses Mahoney's Walnut Oil. He suggests cutting up an old



T-shirt to a 3" x 4" rag, then fold tightly. Place the oil on the rag to apply to a spinning piece of work. This smaller applicator helps prevent it from being caught up in the spinning lathe. He uses an uncharged buffing wheel to sand (meaning no grit or wax). The oil is what is buffing out the piece. He then applies Mahoney's wax cream with a charged buffer to wipe off excess oil and finish the piece. Jimmy gave a tip on how to fill a wormhole or flaw that is a little different than coffee grounds, or rock. He gets brass key filings from his local

Demonstration November 2012: Finishing Roundtable



hardware store. They are free, and add a special sparkle to the piece.



Jim Spano talked about a finishing technique by using 50% Deft and 50% lacquer thinner that he brushes on with a paint



brush then wipes off. He also uses a combination of Mahoney Walnut and wax finishes. To achieve a dull finish he doesn't buff the piece. Jim also talked about Renaissance Wax. Even though the price seems expen-



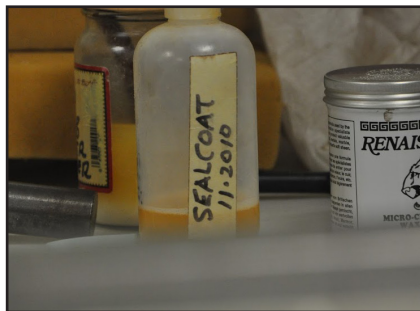
sive, the can lasts a long time and it doesn't leave fingerprints. He uses Sealcoat as a sanding



sealer if the end grain doesn't color. His favorite finishing is



Rustoleum Stone. He says it is easy to use and reduces sanding. Jim demonstrated using the Deft buffing system. The EEE takes out the imperfections, white



diamond removes the EEE and finer finishes the piece, then the was buffs the piece to a lovely finish.

Hilda Carpenter demonstrated using India Ink on wood. It dries fast and affords the wood-turner an option on low-featured wood. She then used Golden Interference and iridescent acrylic airbrush spray paint to provide a colored sheen. Painters' tape or pinstripe tape can block the paint and ink for interesting interleaving of color and wood.



Photos

Photographs for this month's **Chip Pile** were provided by **Drew Shelton, Steve Green**. If you have digital photos that you would like to have considered for use in the newsletter. Send them to the Editor at hildac@mac.com.

Random Ruminations:
"You Can't Go Home Again"

BY

Charles Kay

The year 2012 was a very good one for me and continued to improve as the year drew to a close.

I never expected to be spending a fair amount of time turning in December, but that is what happened. I had a very successful BudaFest and a big wholesale order to start the month off and found myself down to only four wine stoppers. Then on the Monday after the Christmas party I began getting calls from repeat customers, some for stoppers, but others for other things I had sold out of. So I spent a few frantic days before Christmas turning baby rattles, mystery salt boxes and a couple of salt cellars. Plus, I restocked on wine stoppers. I then expected to get some more boxes and lidded bowls done to decorate and bring to the January meeting.

I was on a roll and expected to accomplish much more before the end of the year, but two things arose to interrupt those plans. The first was a diversion to the middle of the nineteenth century. Back in the summer, I had read Jean Edward Smith's new biography of Eisenhower, and found him continuing to refer back to Grant. I think that Smith is an excellent writer and I really knew little of Grant, so I chased down Smith's biography of Grant. As I was finishing that volume, a biography of Grant by another of my favorite authors, H. W. Brands, hit the book stores, so naturally I had to check that one out. I figured that I had spent enough time on the Civil War for now, but as I was finishing the Brands, I made the mistake of going to see Lincoln, an excellent movie that I highly recommend if you haven't seen it. Clearly Spielberg had relied on Doris Kearns Goodwin's Team of Rivals in putting the movie together. I had talked myself out of reading that book when it came out several years ago, but couldn't resist at this point. I am about done with it and it is a great read. You can't do much turning when you are mired in the 1860s, however.

If that wasn't enough to keep me from the lathe, the annual football bowl season finally did me

in. I am not much of a TV watcher, and hadn't watched sports for years until the last three years or so, when I found myself drawn again to college football. Admittedly, there are way too many bowl games and many of them aren't of much interest to me, but I get caught up in the drama of college football.

After I caught up on my turning, I had thought to get back to painting my disassembled Jet mini. I can't let Spano get all the glory and I know I will be ragged on at the January First Saturday if I show up again without my lathe. My excuse is that it has been very cold at night and pretty humid and those do not seem to be optimum conditions for painting cast iron. Anyway, that is my story. I am sure that the Civil War and college football have nothing to do with it.

On a different note, I was reminded during Christmas week of the words of Thomas Wolfe that, "you can't go home again." I had occasion to go to Houston to visit with friends. I grew up between Houston and Galveston and hadn't been there since well before Hurricane Rita in 2005. So I headed down to Galveston County to drive through the area where I grew up. I found that the two houses where I had lived during my public school years are both gone and that two of the four school buildings where I attended are gone and the other two are no longer schools. I have lived long enough to see my past eliminated.

There are only five more bowl games and they are down to one a day now, so maybe I will get back to my lathe soon.

Keep on Turning,

Charlie Kay

2013 Officers

President

Charles Kay
512-636-3492
ckayda@gmail.com

President Elect

Pat Little
512-423-0508
Pattlittle46@yahoo.com

Program Chairman

Stacey Hager
512-282-1036
StaceyHager@hotmail.com

Secretary/Newsletter Editor

Hilda Carpenter
512.395-7782
hildac@mac.com

Treasurer

Ed Roberts
512.255.3294
eroberts6@juno.com

Membership Chairman

Chris Van Peski
512-303-1590
chrisvanpeski@gmail.com

Webmaster

Aleta Wallace
aleta.wallace@gmail.com
512-589-8949

Audio/Visual Coordinator

Greg Vest
512-736-2715
artwoodworker@verizon.net

First Saturday Coordinator

Len Brissette
512-423-3625
mesquite@austin.rr.com

Librarian

David Wolter
512.250.1912
dlwolter@swbell.net

CTWA Web Site

www.ctwa.org

Editorial Information

This newsletter is by and for members. The Editor welcomes any written materials and will provide assistance with getting your information into publishable form if you want. **DEADLINE IS THE FIRST MONDAY OF THE MONTH.** Contact me with your ideas and drafts by phone at 512.395-7782, by E-mail at hildac@mac.com or mail them to:

The Chip Pile

c/o Hilda Carpenter
560 Moss Rose Lane
Driftwood, TX 78619

Volunteer Instructors

SOUTH

Bill Hammack 512.282.0832
tops tiny turnings
Stacey Hager 512.282.1036
basics, spindles, sharpening, hollow vessels
Johnny Tolly 512.858.4471
basics, open segmented
Jimmy Tolly 512.894.0686
basics, platters
Craig Timmerman 512.288.3598
basics, square turning, hollow vessels
Charlie Kay ckayday@gmail.com
boxes & bottle stoppers
H. O. Evans 512.282.2830
segmented turnings
Hilda Carpenter 512-395-7782
Airbrushing, tool handles
Jack Besperka 512.261.4682
decoration & finishing

NORTH

Rusty Myers 512.218.1606
basics, boxes, kitchenware
Judy Williams 512.293.7479
spindles
Jim Spano 512.835.5023
novelty items, tops, shop gadgets
Len Brissette 512.258.4004
bowls, platters, sharpening

ROUND ROCK

Larry Walrath 512.255.5379
big vessels, bowls, platters
Ed Roberts 512.255.3294
basics platters

LOCKHART/SAN MARCOS

David Dick 512.357.6517
basics, spindles, architectural

Calendar

The calendar listings are an attempt to keep you up to date on upcoming CTWA events, as well as other events of particular interest to woodturners. All regular 3rd Tuesday CTWA Meetings are at American Youthworks. Check Website for latest information.

All 1st Saturdays are from 9 am-noon. All meetings are 7 PM to 9 PM

Events & Dates subject to change, watch for emails or website notifications!

January 1st Saturday
place Stacey Hager

January 15th CTWA Meeting
Presenter: Len Brissette

February 2nd 1st Saturday
place TBD

February 19th CTWA Meeting
Presenter: TBD

March 2nd 1st Saturday
place TBD

March 19 th CTWA Meeting
Presenter: TBD

April 6th 1st Saturday
place TBD

April 16th 7 PM to 9 PM
CTWA Meeting
Presenter: TBD

May 4th 9 am noon
1st Saturday
place TBD

May 21st 7 PM to 9 PM
CTWA Meeting
Presenter: TBD

2013 Christmas Party

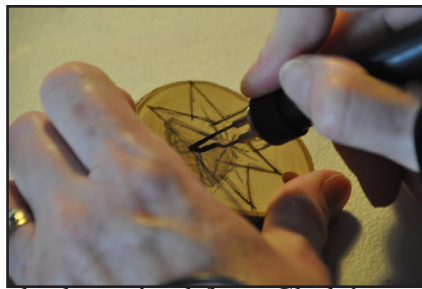
CTWA members and spouses gathered at **Pat and Clyde Little's** beautiful home on Lake Travis on Saturday, December



12, for the annual Christmas Party. No one got a precise count, but a good guess is 70 to 75 people, our largest turnout yet for this annual event. A big crowd spent the morning in the large shop, though there was much more talking than turning. That is, of course, one of the objectives of these get-togethers. There was much camaraderie over coffee and Round Rock donuts (supplied yet again by the ever reliable Drew Shelton) amidst all the woodworking machinery. As always, **Jim Spano** was turning on his unique Spano Banana lathe,



demonstrating spindle turning and coaxing others into trying their hand at it. **Marcia Tolly** was demonstrating her pyrography technique and **Charlie Kay** was turning a little box out of a nicely figured piece of cedar



elm he swiped from Clyde's stash. **Craig Timmerman** brought along an example of his newest innovative pieces - turned spheres that stick magnetically to laminated arcs.

From there, it was upstairs to dine on the sumptuous spread, with the covered dishes folks brought to accompany the turkey, duck, and ham provided. It was nice that it was a beautiful day with perfect temperatures as we had such a big turnout that it was necessary to set up some tables on the decks.



When everyone had eaten more than they should have, it was time for the highly anticipated Gift Exchange. Before the gifts and thievery could begin, there was one more thing that needed



to be attended to. Pat and Clyde



have provided way more to our club than we could ever ask of them, not the least of which is hosting this big event every year for the last several years. At the SWAT Symposium in August, that issue and how the club could recognize their contributions was a topic of conversation amongst a big group of folks working in our room. Someone made the observation that they had lost their collection of gallery class woodturnings when their house burned several years ago. One of the pieces had been a beautiful piece turned by **Craig Timmerman** that they had bought at an AAW Banquet auction. It turned out that Craig had later turned a duplicate of that piece and called it "Phoenix." That led to an immediate consensus in the group. So in the fall the Board decided to purchase this piece and present it to the Little's. **Charlie Kay** made that presentation on behalf of CTWA.

When that was done, we moved on to the Gift Exchange. As usual, the rules were provided by **Marcia Tolly** and explained by **Betty Hager**. As always, there was much merriment as many gifts were stolen until they were frozen. **Blair Feller** and **Dwight Schaeper** shared the title of most stolen from that **Mack Peterson** held in 2010.

Thanks to all who participated.

Editor's "Turn"

I'm back!

For those of you who don't know me, or perhaps who I don't know, I took myself out of commission last year, believing that I faced only a few years left to live. I was given a diagnosis that doomed me to dementia. Charlie gentlemanly came to my rescue by taking up the newsletter last year. Of course, he was already an expert, since he had done it for 10 years!

Now, the good news is that after an extended visit in the hospital, where the doctor took me off all the seizure medications I was taking . . . instead of having debilitating seizures, I got well! The bottom line is . . . the diagnosis of frontal lobe dementia was incorrect! I guess that's why they say that doctors "practice" medicine.

I'm delighted to be of service again to CTWA through this newsletter and the secretaryship.

So, what lessons did I learn in this past year? Well, question every single medication your doctor wants to give you, and realize all medications are indeed additive. Second, I learned that I can turn a pretty darn nice bowl. My turning skills really deteriorated as

my brain went to sleep, but now that it's awake again I find it amazingly easy to concentrate on turning. Figure that!

Third, I realized how very special my friends in CTWA are to me. Your support and love were amazing and helped in my recovery.

This next year should be an energizing year with Charlie's leadership. I look forward to working with him in any way I can to make the club stronger.

If you have ideas about articles, subjects, books, techniques, tools, etc. Just let me know. I'll research them and get them to you.

Keep turnin' it on!

Hilda

Letters

A letter from

December 29, 2012

Charlie:

I know this is late but I still wanted to let you and all of the membership know how much Clyde and I appreciate what you did for us at the Christmas party. It truly was a bittersweet moment for both of us. We love the turning you guys

purchased for us.

There are no words to express our appreciation for all that you have done for each other and for us. Y'all are special to us and we would like to say THANK YOU very much.

Happy New Year

Pat Little

Members In the News

Craig Timmerman had is usual booth at the Armadillo Christmas Bazaar in Austin. This event is an annual favorite for many who look for unique Christmas gifts each year. CTWA is very lucky to have such an accomplished professional woodturner who always manages to turn non-round objects d'art.

Business Meeting

November's meeting was busy with elections for the upcoming year. We appreciate all the past volunteers who contributed to making this a truly effective club. Thanks especially to **Curtis Turner** for his contributions of ideas that expanded CTWA beyond our normal circle of reach.

President, **Charlie Kay** then presented the upcoming slate of officers and approved unanimously with no additional nominations and no one offering discussion:

President: Charlie Kay
President elect: Pat Little
Program Chair: Stacey Hager
Secretary/Newsletter Editor: Hilda Carpenter
Membership: Chris Van Peski
Continuing to serve in their current capacities:
Treasurer: Ed Roberts
Webmaster: Aleta Wallace

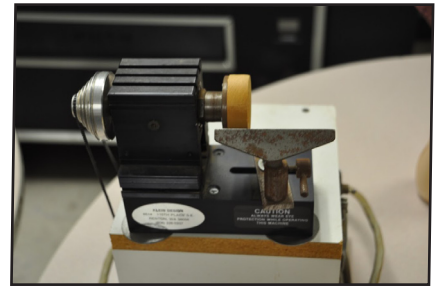
Keeping Austin Turning Since 1988

Audio/Visual Coordinator: Greg Vest
First Saturday Coordinator: Len Brissette
Librarian: David Wolter

There were 40 people at the meeting and Charlie welcomed two visitors, Vince Martin and Steve Maly. Charlie then turned the meeting over to the presenters.

Charlie called for a vote to contribute \$1,000 again to the AYW financial campaign. It was unanimously approved.

Bonnie Cline Lathe from Cortland Hunt



Chris Van Peski



October Gallery

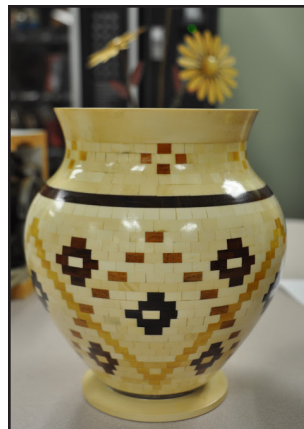
Stephen Van Gee



Unknown



H. O. Evans



Stephen Van Gee



October Gallery

Charles Kay



Eddy Butler



Stephen Van Gee



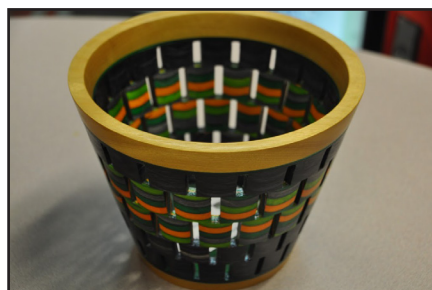
Mac Peterson



Mac Peterson



Several of these clock "kits" were taken away at the meeting.



Jim Spano

Eddy Butler



Bring Back Raffle

**Jim Howe: Stephen Van Gee
Jimmy Tolly**



Congratulations if you won a Bring Back. You need to bring back a turning to share next month.

Your turning should represent the level of your turning skill. If you do not have a lathe, or don't feel you have the experience, go to a first Saturday, contact one of our volunteer instructors to help you prepare a Bring Back piece. So buy a ticket, get involved and have fun.

Woodturner: Winner

**Bob Hreher: Aelta
Wallace**



**Eddy Butler: Jim
McKinney**

It's the end of the year. Think back & if you still owe a bring back, it's a good time to turn it out, or ask one of the volunteers or officers to help your catch up.

You know who you are!

Steve Green: Greg Vest



Johnnie Perales delighted the members with Starbuck's Coffee and pastries in thanks for the contributions of woodturnings from the members for the American YouthWorks annual fund raising.



Drew Shelton: Greg Vest



Volunteer Your Shop for First Saturday!

1. It doesn't need to be fancy, or big.
2. We'll bring the lathes.
3. You make the coffee.
4. We'll bring the donuts.
5. Have enough room for at least 1-2 turners (easy in the summer).
6. Let Len Brissette
lbrissette@austin.rr.com
know! Or email the editor.



Len Brissette

Membership in CTWA

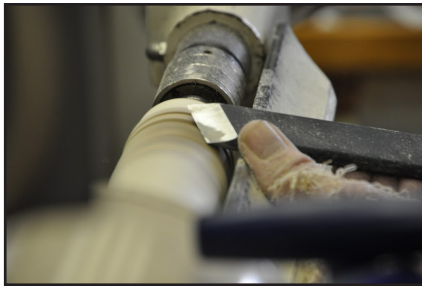
We welcome NEW MEMBERS to join our band of merry turners anytime. An interest in woodturning is the only requirement. Dues are \$35.00 per year, prorated to \$3.00/month for new members. CTWA members are also encouraged to join the American Association of Woodturners, AAW. Those dues are \$38 online membership only, \$48.00 for individuals and \$50 for families. Your membership includes the AAW magazine, American Woodturner, a first-class quarterly magazine full of woodturning articles, tips and ideas with color illustration of the world's master turners' techniques. With our membership, whether you are experienced or a novice, we will teach you, or learn from you, and build long-lasting friendships based on a common kinship of matching wood, metal, machine and man, or woman as the case may be.

1st Sat. January

Some 30 or so folks showed up at Stacey Hager's shop on a chilly, gray morning for the first First Saturday of 2013. The get together was long on talk and short on turning this time. The ever reliable Jim Spano showed up with his latest invention, which combines a disco sized strobe light with a Hall effect sensor to stop the apparent motion of the piece being turned, so that you can see the actual cut taking place. After Jim showed it off others,

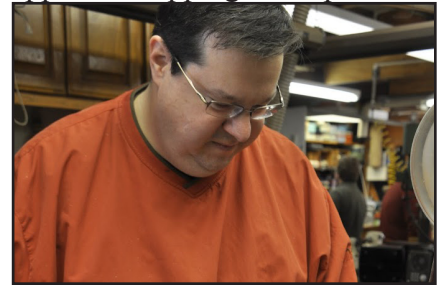


including Drew Shelton and Craig Timmerman, gave it a try. Craig spent the most time on it. Watching the system at work



quickly induced headaches in

most viewers, said to be ameliorated by wearing yellow goggles while using the device. The coolest side observation was the apparent stopping of chips in



midair. Other folks were practicing on spindles on Stacey's Oneway. There was also a lot of interest in the beautiful photo book that Betty Hager had published for Stacey for Christmas. It follows Stacey's turning career and many of the beautiful pieces that he has produced.

Following the session, a dozen or so folks headed to The Bakehouse for lunch. Charlie Kay had sold folks on the outstanding chicken pot pie available there. Of course that didn't turn out as expected. They had sold out and it would be several hours before more was available. Maybe next time.



Stacey Hager's "Politician" *Runs on hot air and does nothing useful* . . . *Designed and built in 2006 by Stacey Hager who also runs on hot air and does nothing useful*

The Chip Pile

Central Texas Woodturners Association
A chapter of the American Association of Woodturners

Hilda V. Carpenter
560 Moss Rose Lane
Driftwood, TX 78619

To:

Meeting Location

The CTWA meets at American YouthWorks, 1901 East Ben White Boulevard (Texas 71) in south Austin. The building is on the south side of Ben White, just east of Interstate 35. The best entry is off Woodward Street, just south of a little strip center. You enter an alleyway into a lighted parking lot. We will enter through the back door. As you drive in, you will see a truck dock in the back of the building with a big roll-up white door. The entryway is just to the right of the truck dock. Folks coming from the north may want to exit I-35 at Woodward and proceed south on Woodward across Ben White.

