



The Chip Pile

The Newsletter of the Central Texas Woodturners Association
Austin, Texas
A Chapter of the American Association of Woodturners

CTWA Meetings

APRIL MEETING

Tuesday, April 17, 2012
7:00 - 9:00 PM
American YouthWorks - Austin, Texas
1901 East SH 71
(about 1/4 mile east of I-35 on south side of SH 71)

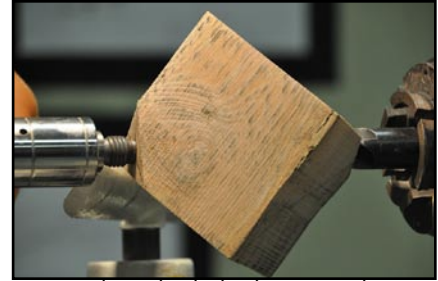
FIRST SATURDAY TURNOUT

The First Saturday Turnout for May will be at 9:00 AM on May 5, at a location to be announced. Check your E-mail

to turn on a spring pole lathe!

We are fortunate to have one of the largest turning symposiums just a short drive away in Waco. So, this is your reminder to that SWAT is around the corner (August 24-26). If you've never attended a symposium, you owe it to yourself to make every effort to attend.

Thanks,



mounted on the lathe between those two centers, with the bottom of the bowl oriented to the tailstock. Using a bowl gouge, material is removed to form a tenon on the bottom. As material is removed, a triangular base will appear. This will become the foot of the bowl. The more material that is removed, the bigger the base will become. You need to remove enough

Curtis

Symposia

My travels this month took me to Saratoga Springs, New York. The event was the Northeastern Woodworkers Showcase 2012. This event combines a woodworking show and furniture exhibit with Totally Turning, a regional turning symposium.

Although I was there to work for Lie-Nielsen Toolworks, I was able to take in a few turning related experiences. I saw some amazing turnings by David Nittmann, among many others. I had the chance to talk with Brent English of Robust lathes and to thank

him in person for working with Johnny Tolly to provide the club with special pricing on a few tool rests for the club. I also had the opportunity to talk with Steve Worcester (demonstrated for CTWA last year) and Sharon Doughtie. Of course, there was stacks of eye popping turning blanks from all over the globe. I even had the opportunity

March Demo

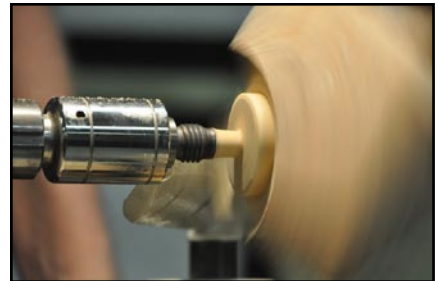
Turning a Three-sided Box

Our own talented **Craig Timmerman** treated us to a demonstration of another of his complicated turning creations at our March meeting. This one is a footed three-sided bowl.



To turn this piece, Craig starts with a cube, suggesting 4" X 4" X 4" as good starting size.

This cube should be defect free. He cuts the tip off of two opposite corners and finds the centers of these two newly created flats. The piece is then



material to make a stable base as well as enough to create a tenon. The cuts should create a shallow bowl, which will give the legs an arched appearance. Finally, cut a tenon to fit your chuck. That tenon should be solid wood all the way around, with no flat spots and should be as small in diam-

Monthly Features

Business Meeting 4
Calendar, page 6
Demo Schedule, page 5
Membership Information, page 6
Shop Crawl Schedule, page 6
This Month's Program, page 5
Volunteer Instructors, page 7

The American Association of Woodturners is "Dedicated to Providing Education, Information and Organization to Those Interested in Woodturning." In keeping with the standards of our National Organization, the Central Texas Woodturners Association hereby gives permission for all other woodturning chapters, organizations, magazines and newspapers to use any materials contained herein for the benefit of all woodturners everywhere. We ask that credit be given for the source of the material.

2012 Officers

President

Curtis Turner
512.914.1873
curtis_turner@sbcglobal.net

President Elect

Charles Kay
512.636.3492
ckayda@gmail.com

Program Chairman

Tim White
512.312.2572
twhite716@austin.rr.com

Secretary/Newsletter Editor

Greg Vest
512.736.2715
sounddudeaustin@gmail.com

Treasurer

Ed Roberts
512.255.3294
eroberts6@juno.com

Membership Chairman

Pat Little
512.423.0508
patlittle46@yahoo.com

Webmaster

Aleta Wallace
512.589.8949
aleta.wallace@gmail.com

Audio/Visual Coordinator

Eddy Butler
325.388.8565
artwoodworker@verizon.net

First Saturday Coordinator

Len Brissette
512.423.3625
mesquite@austin.rr.com

CTWA Web Site

www.ctwa.org

Editorial Information

This newsletter is by and for members. The Editor welcomes any written materials and will provide assistance with getting your information into publishable form if you want. **DEADLINE IS THE FIRST MONDAY OF THE MONTH.** Contact me with your ideas and drafts by phone at 512.636.3492, by E-mail at ckay@austin.rr.com or mail them to:

The Chip Pile

c/o Charles Kay
828 Middle Creek Drive
Buda TX 78610-3056

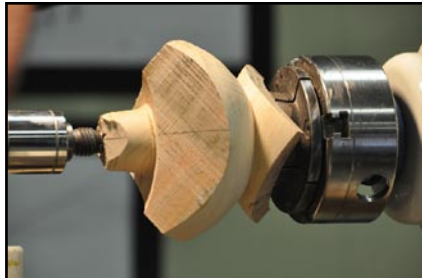
Keeping Austin Turning Since 1988

eter as possible to fit your chuck and should have a flat shoulder to seat the chuck.

The piece is now reversed and mounted in your four-jaw chuck, with the tailstock providing additional support. The bowl gouge is then used to form the outside shape of the bowl and to turn the top side of the legs. The shape of the top of the legs should



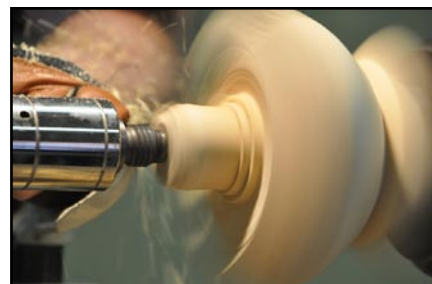
match the arch you created on the bottom, or at least enough material should be left so that you can match the bottom to the top when you remove the tenon. The most difficult part of this step is the area where the



bowl and the legs converge. Use of detail gouge or a skew will simplify the process. It is easier to finish this area if the bowl and the legs form a wide vee. Making the legs have more arch keeps them away from the bowl and makes them easier to sand. For a variation, a cove or some other detail can be used in lieu of a vee where the bowl and base meet.

If you are sanding while the lathe is running, you must power sand. Craig recommends using a five inch sanding pad. If you cut a vee where the bowl and legs meet, you may have to use hand sanding. You can wrap sandpaper around a long thin piece of wood to get to that area. The wood needs to be long enough to keep your fingers a safe distance from the rotating wings.

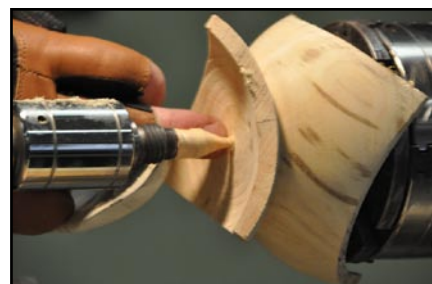
With the tailstock still in place, begin removing material from the inside of the bowl, making light cuts. Turn as much of the inside of the bowl as possible with the tailstock in place. When the tailstock is removed, finish the wings of the bowl first, then move on to the rest. Once the wings are turned, don't go back to them



as they will be vibrating too much to cut cleanly. As you get to the inside bottom, you need to pay attention to where the bottom will be. The outside shape will look like the bowl disappears into the foot area, but the inside bottom needs to stop short of that or you will wind up with a fancy three-sided funnel when you turn the tenon off the bottom. Now power sand the inside of the bowl.



To finish the bottom of the base, chuck a 3" X 3" waste block and turn it to a convex shape a concave center, sort of like a donut. Reverse the bowl onto this waste block with a piece of leather between the two and bring the



tailstock up to hold the bowl in place. Carefully remove the tenon and match the shape of the bottom of the legs to the shape of the top. Turn off as much of the tenon as you can, then remove the bowl, cut off the final nubbin and sand the bottom and apply the finish of your choice.



Thanks to Peter for donating these beautiful pieces.

Jack Besperka also donated three pieces that he called "Facebook Friends" to the raffle. **Greg Vest** had the lucky ticket for the black Friend, **Greg Stowers** won the white piece and **Jim Spano** took home the red Friend. Thanks to Jack for donating his Friends.

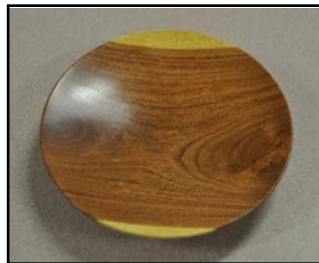
Thanks, Craig, for another great demonstration and for making clear how to accomplish this complicated piece.

Bring Back

We were lucky to have three nice pieces donated by talented turner **Peter Hawkins** at our March meeting. All three were finished with salad bowl finish and Beall buffed. **Jim Brinkman** was the lucky winner of a Peter's beautiful pecan hollow vessel. **Larry Robinson** took home the nice ash platter and **Jim Spano** scored the ash vase.



Jim Howe picked up a Christmas ornament turned by new turner **Sandy Peck** who was a visitor at our February meeting. **Larry Robinson** won a small mesquite platter turned by **Jim Spano**, finished with Deft and Beall buffed. **Gene Stokes** had the ticket for a small figured maple bowl turned by **Charlie Kay** and finished with wax.

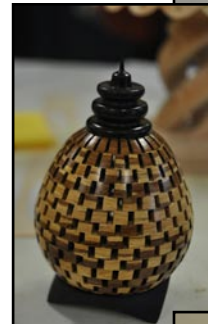
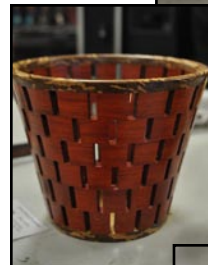
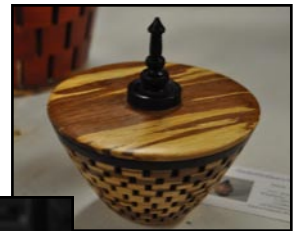


As is the custom, each of the winners will bring back a turned item to the next meeting. The Bring Back items should be representative of each per-

son's best work. It should be noted that the Bring Back Raffle is meant to be a fun event. No one is grading you on the quality of your work. Just bring a piece that represents the best that YOU can do. If you don't yet have a lathe or don't feel that you have enough experience, contact one of our Volunteer Instructors to help you prepare a Bring Back piece. So buy a ticket, get involved and have fun.

Show and Tell

Our prolific segmented turner, **Mack Peterson**, brought along five pieces to the instant gallery. There was a bowl with lid of bamboo, ebony and yellow heart, a vessel of bamboo and padauk, a bowl of padauk, yellowheart and marblewood, and another vessel of ebony and bamboo. Then a surprise a non-segmented triangular bowl of sable.



Keeping Austin Turning Since 1988

Steve Green showed off a maple platter with mineral crystal inlay finished with polyurethane.



Hilda Carpenter's patient determination has finally begun to pay off and shown by this nice spalted maple pierced bowl finished with polyurethane. Great job, Hilda.



Chris Van Peski showed off an interesting pair of tea lamps made from pine, one walnut stained and the other unfinished.



Joe Kirk brought along a lidded bowl of mesquite and ebony he hollowed with his new Best Woods hollower and finished with polyurethane gel and Hut wax.



Jack Graham showed three of his dyed silver maple bowls, highly finished with polyurethane. Jack says he

is about ready to give us a demonstration on his dying technique.



Jim Brinkman brought three items, a box of mesquite and walnut, a vase of mesquite, and a vessel of mesquite. All were finished with Deft and Beally buffed.



Curtis Turner also showed off three pieces, an osage orange burl bowl finished with wax, an osage orange burl disk finished with wax, and a cedar elm burl bowl as yet unfinished.



Finally, as has become common lately, I have one orphan piece. It is a nice bowl, but I cannot credit you if you don't leave a slip with a reasonable description of the turning. Sorry.



Business Meeting

There were 54 persons in attendance at our March 20, 2012, meeting, presided over by **President Curtis Turner**. For the first time in a very long while, there were no visitors.

Craig Timmerman reported on the status of the Austin Parks and Recreation tree cutting program. As of mid-March, the city had not begun to cut trees this spring. They are wait-

ing until everything is leafed out to be sure that the trees scheduled for cutting are actually dead. He will follow up and let us know when wood is available.

Curtis brought us up to date on the Alan Lacer events coming up April 21 through April 23. The Saturday, April 21 all-day demonstrations will be open to all members at the American YouthWorks site and pizza will be available for our on-site lunch. The sessions will run from 9:00 AM to 4:00 PM. He reported that some vacancies are still available for the Sunday and Monday hands-on sessions. Contact Tim White to sign up. Cost is \$150 per day per person. Those sessions will take place in **Clyde and Pat Little's** shop, starting at 9:00 AM.

Webmaster **Aleta Wallace** reported that the CTWA mass E-mail list is now operable. contact Membership Chair Pat Little to get your name on the list.

Curtis reported that he is extending his New Turner (less than one-year) Challenge contest to the April meeting and prizes will be given. First place will be a \$50 Craft Supplies gift certificate, second a \$20 certificate and third a \$10 certificate.

Curtis told us that the club is considering a couple of events for the fall, although no firm plans are yet in place. New Zealand turner Graeme Priddle will be in the US and may be available for demonstrations and/or hands-on sessions. Also, we will probably do a class for new turners this fall like the one we did last fall. More information will be reported as it becomes available.

April Program

Real Bullet Pens

Our demonstrator for our April meeting will be long-time CTWA stalwart **Johnny Tolly**. Johnny will be demonstrating how he makes



his award winning Bullet Pens. These are made from actual rifle shells that have been fired (yes, from an actual

rifle). These are not the fake shells that you can buy from the catalogs.

Johnny will be giving away all of his hard-learned tricks, so you surely will not want to miss this demonstration.

No rifles will be fired in the demonstration.

Show Time

Steve Green has lined up a busy year of Art Shows for 2012. You can catch him at the following:

The Spring Show of the Wimberley Valley Art League on April 28th from 10 - 5. www.wimberley-artsfest.com

As the "**Featured Artist**" at the **Buda Fine Arts Festival**

October 27 - 28, 10 - 6 on Saturday and 10 - 4 on Sunday. www.budafineartsfestival.com

This will be a feature from time to time, outlining where our members are selling their wares. Send me your information and I will include you.

Charlie Kay

CTWA Supporters

We need to recognize those whose support help to make for a better Central Texas Woodturners Association.

Thanks to:

Craft Supplies USA

for providing gift certificates to the club, and to:

American Youth Works

for providing us with a meeting facility.

Photos

Photographs for this month's **Chip Pile** were provided by **Drew Shelton**. If you have digital photos that you would like to have considered for use in the newsletter. Send them to the Editor at ckayda@gmail.com.

Web Site

Check out the CTWA Web Site at www.CTWA.org. If you have comments, suggestions or something for the Gallery, get in touch with **Webmaster Aleta Wallace** at aleta.wallace@gmail.com.

In Memorium

Elva Roberts

We are sad to report that Ed Roberts's wife Elva passed away on Friday, March 30. She was in hospice care at the end of a long illness. There will be a memorial service at the First United Methodist Church, 1004 North Main Street, Round Rock, at 2:00 PM on Friday, April 13.

Most of our long-time members had gotten to know Elva at our annual Christmas parties, where she faithfully shared her home made dinner rolls.

Our thoughts are with Ed and his family in this sad and difficult time.

2012 Demonstration Schedule

April 17	Johnny Tolly
May 15	to be announced
June 19	to be announced
July 17	to be announced
March 20	to be announced

If you are interested in being a Demonstrator at one of our meetings, or want to suggest a Demonstrator, get in touch with **Program Chairman Tim White**.

Calendar

The calendar listings are an attempt to keep you up to date on upcoming CTWA events, as well as other events of particular interest to woodturners.

April 17 - 7:00 PM to 9:00 PM
CTWA Meeting - American YouthWorks

April 21 - all day
Alan Lacer Demos - American YouthWorks

April 22 & 23 - all day
Alan Lacer Hands-on Sessions

May 5 - 9:00 AM to Noon
First Saturday - location to be announced

May 15 - 7:00 PM to 9:00 PM
CTWA Meeting - American YouthWorks

June 2 - 9:00 AM to Noon
First Saturday - Charlie Kay's shop

June 19 - 7:00 to 9:00 PM
CTWA Meeting - American YouthWorks

July 7 - 9:00 AM to Noon
First Saturday - Chris Van Peski's shop

July 17 - 7:00 PM to 9:00 PM
CTWA Meeting - American YouthWorks

August 4 - 9:00 AM to Noon
First Saturday - Orlando Banos's shop

Symposia

There are three major woodturning symposia coming up in the next five months. If you have been to one or more of these events in the past, you already know how inspiring and educational they are. There is also the opportunity to buy more toys -- sorry, tools. Here is the list:

Utah Woodturning Symposium
May 16 through May 19
Provo, Utah

This annual event is sponsored by Craft Supplies and the cost is \$275. You can get more details at

American Association of Woodturners Symposium
June 8 through 10
San Jose, California

This annual event moves around the country every year. It is the largest gathering of woodturners in the world and has a huge and amazing Instant Gallery. The trade show is also amazing. If it has to do with woodturning, you can find it here. The Registration cost is \$250 for members before May 15, \$300 before May 28 and \$350 at the door. You can get more details at www.woodturner.org.

SouthWest Association of Turners Symposium
August 24 through 26
Waco, Texas

Affectionately known as SWAT, this annual symposium is second in size only to the AAW Symposium. There were 821 woodturners at last year's Symposium. It also has a great Instant Gallery and trade show. Best of all, it is by far the least expensive. Advance registration is \$130 and registration at the door is \$160. Plus, it is only 100 miles up the road. If you are a new turner and are looking for inspiration and three days of great demonstrations, you really should plan to attend this. You can get more details at www.swaturners.org.

Membership in CTWA

New members are welcome to join CTWA at any time. All you need is an interest in woodturning. Dues are \$35.00 per year, (\$40 per family) or \$3.00 per month, prorated for new members joining during the year. AAW dues are \$45.00 per year for individuals and \$50.00 for families. CTWA also strongly encourages all of our members to join the American Association of Woodturners (AAW). For that, you get a first class quarterly magazine, **American Woodturner**, with excellent articles on woodturning and woodturners, amply illustrated with color photographs. For more information, go to www.woodturner.org.

To learn more about membership or if you want to join CTWA, contact our Membership Chair:

Pat Little
14307 Geronimo
Volente, TX 78641
patlittle46@yahoo.com
512.423.0508

2012 First Saturday Shop Crawl Schedule

May 5
June 2
July 7
August 4
September 1
April 7

to be announced
Charlie Kay
Chris Van Peski
Orlando Banos
to be announced
to be announced

We can always use volunteer hosts. You don't have to have a fancy shop to host it, just a place for folks to congregate and drink coffee, eat donuts, and maybe for one or two to turn. To volunteer to host a First Saturday Shop Crawl, get in touch with **Len Brissette**.

Clouds

I am completing this issue of The Chip Pile a full day later than I had intended and I offer no apology at all. The clouds made me do it. I had great plans to make a day of it on Wednesday. I planned to knock the newsletter out in short order, then get back into the shop and do some more turning.

I got up at 7:00, early for me, dressed and went to the park for my three and a half hour walk. I got my breakfast, then sat down to start on the newsletter.

I was immediately side tracked by a phone call from my youngest son in San Jose. He drives to work one day a week and calls me either on his way to work or his way home. As always, I enjoyed the lengthy phone call.

I returned to the newsletter for about 45 minutes when I got another phone call. One of the men I met on my Big Bend trip in February wanted to stop by and check out my shop and particularly my band saw. He is a woodworker, but not a turner. He had invited me out to his property near Dripping Springs last week to have me look at some huge black walnut trees in a creek bottom that have been dying over the last several years. He is really concerned that this wood be used and has had some of it planked up and passed on to others. He gave me several large pieces, which I will be bringing to First Saturday.

I drove into downtown Buda for a 4:00 lunch, then came back to work on the newsletter. That didn't last long.

The back of my house faces west and, as of yet, there is nothing but a big vacant field on the other side of my back fence. Through my back door, I could see the stormy clouds with the late afternoon sun peeking through. I have always been a sucker for clouds. I find them mesmerizing and can watch them for hours as some folks do with ocean waves and fires.

I grabbed my camera and went out to shoot some photos. I couldn't possibly count the number of cloud photos I have taken over the last fifty years or so. I took several photos, but no sooner would I decide I'd best get back to the work than the changing clouds would woo me back again. I sat down on the patio to watch for just a couple more minutes.

That was when it hit me. I decided that I was going to forget everything and sit and watch the clouds moving and changing until dark. And, I did. It occurred to me that at this point in my life, I am responsible for absolutely no one but myself. I have no real commitments, other than to publish this newsletter and to serve as President of the club in 2013. Neither of those is very onerous.

I had been treating things like completing the newsletter and getting done with turnings that I had committed to as a job that I was a slave to. I dawned on me that nothing I have to do now is that important any more. Maybe it never was.

I first went on the Social Security rolls the summer that I turned thirteen. I worked forty hour weeks as a laborer in the hot, humid southeast Texas sun. I was spreading fill in formed out slab foundations for new houses. When the fill was done, there were trenches to be cut for beams, then builders felt rolled out and hot mopped with molten asphalt to serve as a vapor barrier in those days before polyethylene sheet. Then the reinforcing mesh and rebar had to be put in place and tied. Then it was on to the next house. In addition, we had to hot mop the built-up roofs and scatter pea gravel in the hot tar. When there was nothing else to do, it was my job to take the 20 pound sledge and knock out the concrete curb section for the driveway. I think I got a dollar an hour.

Jobs got easier, but I was never really not working until I retired. When I retired, I worked on the things that I had always wanted to do. While I have enjoyed doing those things, I couldn't keep from putting pressure on myself to do things under time pressures, although those time pressures were artificial and of my own devising.



All those interruptions on Wednesday were far more pleasurable than fighting with myself to make self-imposed deadlines. From now on, I'm just going to stop and watch the clouds.

Keep on turning,

Charlie Kay

Volunteer Instructors

SOUTH

Bill Hammack 512.282.0832
(tops, tiny turnings)

Stacey Hager 512.282.1036
(basics, spindles, sharpening, hollow vessels)

Johnny Tolly 512.858.4471
(basics, open segmented)

Jimmy Tolly 512.894.0686
(basics, platters)

Craig Timmerman 512.288.3598
(basics, square turnings, hollow vessels)

Charlie Kay 512.636.3492
(boxes, lidded bowls, bottle stoppers)

H. O. Evans 512.282.2830
(segmented turnings)

Hilda Carpenter 512.395.7782
(air brushing, tool handles)

Jack Besperka 512.261.4682
(finishing, decorating)

NORTH

Judy Williams 512.293.7479
(spindles)

Jim Spano 512.835.5023
(novelty items, tops, shop gadgets)

Len Brissette 512.258.4004
(bowls, platters, sharpening)

ROUND ROCK

Larry Walrath 512.255.5379
(big vessels, bowls, platters)

Ed Roberts 512.255.3294
(basics)

LOCKHART/SAN MARCOS

David Dick 512.357.6517
(basics, spindles, architectural)

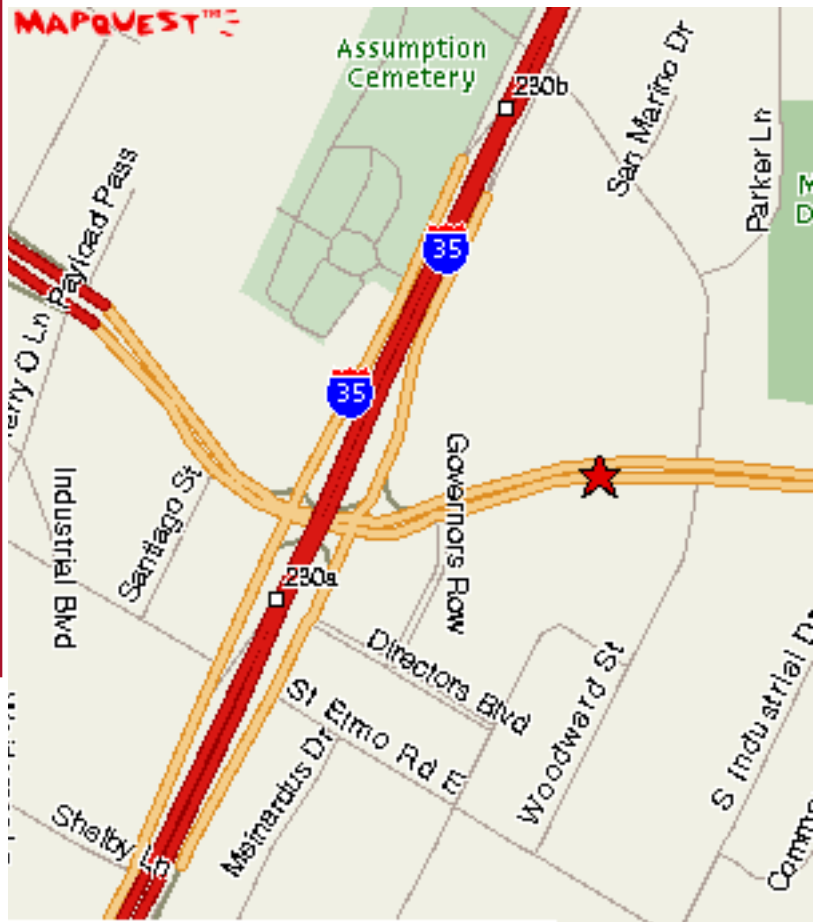
May First Sat-
urday

As of press time, the location for the May 5 First Saturday has not been finalized. The location will probably be announced at the April 17 meeting. In any event, there will be a mass E-mailing prior to the meeting to let you know where it will be. Be sure to see Pat Little if you aren't on the E-mail list.

Charlie Kay

Meeting Location

The CTWA meets at American Youth-Works, 1901 East Ben White Boulevard (Texas 71) in south Austin. The building is on the south side of Ben White, just east of Interstate 35. The best entry is off Woodward Street, just south of a little strip center. You enter an alleyway into a lighted parking lot. We will enter through the back door. As you drive in, you will see a truck dock in the back of the building with a big roll-up white door. The entryway is just to the right of the truck dock. Folks coming from the north may want to exit I-35 at Woodward and proceed south on Woodward across Ben White.



The Chip Pile

Central Texas Woodturners Association
A chapter of the American Association of Woodturners

Charles Kay, Editor
828 Middle Creek Drive
Buda, TX 78610-3056

To: