



The Chip Pile



The Newsletter of the Central Texas Woodturners Association
Austin, Texas
A Chapter of the American Association of Woodturners

May Meeting:
Alan Trout: Casting Turning
May 17, 2011
7:00 - 9:00 PM
American YouthWorks - Austin, Texas
1901 East SH 71
(about 1/4 mile east of I-35 on south side of SH 71)

First Saturday
June 4th 9-noon
Clyde Little's 14307 Geronimo,
Leander, TX 78641, (512) 331-0276

March Most Unusual

Drew Shelton: This Thuya burl finished with walnut oil and wax is stunning. Note how Drew was able to keep the curled and ragged edges even. Thuya Burl is from Morocco. It carves, turns, and polishes well. Although its inherent knottiness and twisted grain make tear out somewhat likely when cutting pieces on the lathe, frequently sharpened gouges generally produce good results.

ished with DEFT & buff, etc. When I researched Bois D'arc I found out it is also Osage Orange. Bois D'arc is for Bow in that it makes great bows. You'll find them as posts, particularly around old cotton fields in Texas. That orange color will deepen, and harden with exposure to sun. The cherry will also darken.

These were both bring-back raffle items. Lovely work.

Monthly Features

Book Review, p. 6
Bring Back Raffle, p. 11
Business Meeting, p. 5
Calendar, p. 6-7
Classified Ads, p. 15
Demo Schedules, p. 6
Editor's "Turn", p. 2
Feature Presenter, p. 2-4
First Saturday, p. 14
Instant Gallery, p. 9-10
Interesting Tools, p. N/A
Meet the Turners p. 5
Membership Information, p. 15
Member's in the News, p. 11
Officers, p. 11
Photo Credits, p. 10
President's Shop, p. 1
Random Ruminations, p. 2
The Month's Most Unusual, p. 1
Volunteer your Shop, p. 15
Volunteer Instructors, p. 8
EXTRA'S:
AAW Symposium, p. 8
AYW, p. 13
BOWLS AAW/SWAT, p. 8
Club Demonstrators, p. 13
Current Demo's, p. 5
Pres.' Challenge Composite, p. 1
SWAT, p. 8
TTSA, p. 11

The President's Shop



Have you ever looked at the age of the officers in CTWA? I don't intend to offend anyone by that opening statement. However, I

use this "Uncle Sam wants YOU" as an icon to remind all of us that the vitality of a club depends on the newer members to take the leadership from the older guard.

We currently have a position of audio/visual coordinator open. Do you know how to take pictures of your kids; hook up your computer to your TV? Then most likely you are qualified for this position. If you know how to lead, then sign up for a leadership position. You will not lead alone—trust me, I would not do it if I had to do it alone. We need new blood. CTWA needs you. Officers are elected in October, it's not too early to think about it.

The **President's Challenge** is due in June. This composite piece can be a collaborative: small or a rocket ship of 7' your imagination is the limit, have fun with it.

"Keep making chips,
David Dick, President



Jim Spano was busy with his off center chuck, and created this goblet made of Bois D'arc and Cherry fin-



The American Association of Woodturners is "Dedicated to Providing Education, Information and Organization to Those Interested in Woodturning." In keeping with the standards of our National Organization, the Central Texas Woodturners Association hereby gives permission for all other woodturning chapters, organizations, magazines and newspapers to use any materials contained herein for the benefit of all woodturners everywhere. We ask that credit be given for the source of the material.

Editor's "Turn"

This was quite a month, wasn't it? I missed the meeting while I attended a family reunion in Florida. Osama Bin Ladin is dead. I travelled to Waco to see some amazing childrens' efforts. I also saw the evidence of our Texas budget cuts and gas price influence (this lowered the number of entries by many schools).

I learned that the more ribbons the kids received that the more funding the technical portion grants were funded. However, we were to be fair in our judging. Thus, I never disqualified any child, I recategorized a lot. I felt like I was in politics (icky).

Then I headed over to Lubbock to see my mother for mother's day. She is in an Alzheimer's home, all she wants is to go back home. All I wanted to do was recategorize her. (icky).

I couldn't wait to return home to Driftwood and see my lathe. I have to finish a top for my Beads of Courage Bowl. Then the painting begins. It has a funny frog in the inside. I hope it cheers a child as much as it does me.

I reflected a lot on my travels and I realized I really missed my woodturning friends during the trips. I missed the meeting and first Saturday. You are my extended family and make me feel warm and welcome.

I am placing the paperwork for AYW to send in a donation for them. They need your help, we don't think about them as our own extended family. Until we see them make pens during our supervision. Or when Johnnie turns on the lights.

Take care dear family, I'll see you this month and I'm looking forward to it.

Keep turning it on,

Hilda Carpenter, Editor

Random Ruminations: Busy Month of Moving BY Charles Kay

Charlie was busy moving this month. I'd like to thank him for his ongoing contribution to the **Chip Pile**. He covered the business meeting and the First Saturday for me this month. We'll Look forward to seeing his Random Ruminations next month and see how his readings and life-ongoings are unfolding. —Hilda Carpenter

Keep on turning,
Charlie Kay

Demonstration April 2011: Craig Timmerman:

Our own Craig Timmerman conducted the same Spout-Off Vase demonstration that he will bring to the American Association of Woodturners in June. Craig's demonstrations always seem to turn complicated turnings into simple tasks to produce beautiful pieces. Of course, in practicality, we know this is not the case. Moreover, his teaching skills were skillful and we came away with a clear picture of how he produced this spout-off vase rough out.

Enjoy these pictures to get an idea of how Craig walked us through his process.



Thanks you Craig for your efforts in demonstrating to CTWA.



Demonstration April 2011:

Craig Timmerman: con't



Demonstration April 2011, con't:

Craig Timmerman:



Meet the Turners: Johnnie Perales

By
Judy Williams

Ever wonder who that fellow is who opens up the American Youth Center for our meetings? It is **Johnnie Perales** who has been involved with CTWA for years. **Gary Roberts** organized a mentor/training program for AYC back when it was downtown. His thought was that these troubled young people could do something such as pen turning that could in turn become a profitable sideline for them. Being able to make something that others would buy could only enhance the self-esteem of these young people. Over the years CTWA has contributed turned auction items for their fund raisers.

Dealing with young people is exhausting especially when they come to this alternative school already having failed or have been in trouble with the law. Johnnie uses his turning as a relief valve. He said that what he liked best about turning was that it was "meditative as well as soothing".

Johnnie started turning in high school but didn't really take it up again until he restarted 16 years ago. Between high school and going back to the lathe, he worked construction after serving an apprenticeship under his Grandfather. He has a long line of family working with wood and in construction and thinks he comes by it naturally because it's in his family's blood.

When he returned to turning, it was a way to use math and calculations and measurements in a real-life activity. It was also a way to show and demonstrate the value of education in a working environment. The turning was a way to get kids started and involved in using what they were learning in the classroom and show them real life applications. Johnnie gives students a reason and hope for their future.

Johnnie doesn't really go to his shop with a final design in mind. His designs are more organic reflecting what the wood says to him. When he learns a new technique and masters it, then it frees him to create. Currently he has 3 Jet lathes—1 mini and 2 big ones. When pushed to chose one particular thing he likes to turn, he admits to really having fun with weed pots. They are quick, easy and allow for endless creativity that really melts away the days stresses.

Business Meeting

April 19, 2011, Business Meeting

There were 53 attendees at the April 19 CTWA meeting including three visitors. Those visitors were:

Rob Finch, a returning member after a long absence

Rick West, a new turner
Bill Kingsbury, our annual visitor from Appleton, Wisconsin

President **David Dick** made an announcement about the upcoming AAW Symposium in St. Paul, Minnesota, and offered to coordinate carpools if desired. **Craig Timmerman** said he would be driving up and could take limited packages for those that might be flying.

Our planned annual outside turner came up with a conflict, so as an alternative, there will be a club teaching and turning retreat at **Clyde and Pat Little's** shop on October 1. More details with follow.

David Dick and **Johnnie Perales** discussed the financial difficulties facing American YouthWorks due to their loss of several grants this year because of grantors' budget cuts. The AAW Board had approved a \$1,000 check to **American YouthWorks** toward their shortfall. We have been using their space rent free and this seemed a reasonable expense. By show of hands, the club members VOTED to confirm the Board action. Individual contributions would be welcomed.

New item!

Current Demo's

Craig Timmerman will be demonstrating at AAW in June.

Curtis Turner will be conducting a turning demo for the Lone Star Woodturners Association in the Woodlands on May 28th

*If you or you know about a turner who is demonstrating for another club, please let the editor know
hildac@mac.com*

Needed: AV
COORDINATOR

**Demo
Schedule**
**May meeting :
Alan Trout
San Antonio**

May's demonstrator, Alan Trout takes a different approach to woodturning. His 10 years of machinist experience provides a unique perspective. 4 years of woodturning experience and his artistic view garner to create what he calls a "synth-organic" form. While casting is not a new idea, the scale of work that Alan has applied to his techniques is.

He will discuss the basic process and equipment required to do successful casting, along with the required safety procedures. There will also be a demonstration of a basic casting and an opportunity for questions and answers. Alan is a local Texan and we are lucky he is interested in demonstrating to clubs!

Here is an example of his work:



**June meeting
TBD**

Needed club demonstrators

**July meeting
TBD**

Needed club demonstrators

**Book Reviews
by
Judy Williams**

**CLASSIC WOODTURNING PROJECTS by
Bonnie Klein**

Have you ever wanted a quick and easy project to turn? Have you wanted something practical to practice tool skill on? Have you ever wanted instant gratification from woodturning?

This book is really fun. Bonnie starts with the basics and oftentimes we tend to do things "our" way and slack off on safety issues as well as tool handling. The projects are laid out to increase skills but more advanced turners might enjoy the "fun" aspect of turning something that takes advantage of that last little piece of exotic wood. There are lots of pictures so it is hard to go wrong.

Every project seems to have a little something that anyone can add to another project whether it is chatter work enhanced with color or making a realistic carrot pen. Several items such as the chatter work egg or spin top can become the impulse item at a crafts fair to help pay booth fees. One thing that Bonnie probably never thought of is using one of the projects to increase production in one's own turnings. It is through repetition that we become skilled. It may take an hour to do the first chatter work egg, but doing it over and over builds the skill to do it in minutes. Can you not imagine creating decorated Easter eggs on your lathe with the grandkids watching the magic as you apply color?

Calendar

The calendar listings are an attempt to keep you up to date on upcoming CTWA events, as well as other events of particular interest to woodturners. All regular 3rd Tuesday CTWA Meetings are at American Youthworks. Check Website for latest information.

**Events & Dates subject to change,
watch for emails!**

**May 17 7 pm-9pm CTWA MTG
Presenter:
Alan Trout**

**Jun 4th 9am - noon
First Saturday Clyde Little,
14307 Geronimo, Leander, TX
78641, 512-331-0276**

**June 17th 7 PM to 9 PM
CTWA Meeting
Presenter:
Need Club Presenter**

**June 24-26 AAW Symposium
St. Paul, MN.**

**Jul 9th 9am - noon
First Saturday Chris Van Peski,
108 Palo Duro Dr., Cedar Crk,
512-303-1590**

**July 19th 7 PM to 9 PM
CTWA Meeting
Presenter
Need Club Presenter**

**August 6th 7 PM to 9 PM
First Saturday
Orlando Bloom, 11321
Oak Branch Dr, Austin**

**August 16th 7 PM to 9 PM
CTWA Meeting
Presenter
TBD**

**August 26-28 CTWA Symposium
WACO, TX**

**First Saturday
Schedule
2011**

- Jun 4 Clyde Little 14307 Geronimo, Leander, TX 78641,
(512) 331-0276*
- Jul 9 Chris Van Peski 108 Palo Duro Dr. Cedar Creek,
(512-303-1590)
- Aug 6 Orlando Banos 11321 Oak Branch Dr, Austin
- Sep 10 Tim White 1790 Ruby Ranch Rd, Buda
- Oct 1 Clyde Little (Basics Demos)
14307 Geronimo, Leander, TX 78641, (512) 331-0276
- Nov 5 Len Brissette 10901 Cade Circle, Austin, 423-3625
- Dec Christmas Party

**** *Clip this out and paste it in
your daytimer, or enter it into your
phone! Watch for emails, or the web-
site, this is subject to change.*

AAW 25th Annual Symposium

AAW 25th Annual Symposium

June 24-26

St. Paul, MN.

Demonstrators Gallery

Local Tourism

Register now for Hotel discounts

Go to this event with others in our club, or just to enlighten yourself about wood turning. There are multitudes of world-class turners, galleries, and vendors in this annual event.

Several people in our club will be going: David Dick, Curtis Turner, Steve and Hilda Carpenter (first timers) and many more. Craig Timmerman will be demonstrating as well as showing his piece in the gallery! Craig will be driving and able to carry pieces for you.

It is an event worthwhile attending. You must be a member to attend. Your CTWA membership affords you a discounted membership. Spouses must pay a full membership to attend (ouch that one hit me, but it's still worth it!)

BOWLS AND BOWLS

There are two opportunities to make bowls to help two different organizations this year.

AAW:

AAW is supporting a project called **"Return to the Community"** that originally is from a grassroots organization called "The Empty Bowls Project" <http://www.emptybowls.org/> from what I can tell from the research I found on an AAW chat room. "The basic premise is simple: Potters and other craft-people, educators and others work with the community to create handcrafted bowls." Read about it on AAW's site for more information. This goes for hunger.

SWAT:

SWAT has the Beads of Courage bowl proj-

Keeping Austin Turning Since 1988

ect that asks for bowls in 6-12" diameter and 4x4x6" with an easy-open lid. These bowls go for children with cancer and will be filled with beads for them to string.

So, no matter which way you wish to go, please make a bowl for one of these worthy projects.

Beads of Courage Bowl by Johnny Tolly in the instant gallery made from Maple, Bubinga, Oil & Wax finish with beads to make an easy open top.



SWAT Annual Symposium

August 26-28

WACO, TEXAS

SWAT Aug. 26-28 Checklist

- Register for SWAT [http:// www.swat.org](http://www.swat.org)
- Hotel Reservations (use AAA or other discounts)
- Practice a gallery trial piece for SWAT this month Finish turning it and review for changes.
- Let the Tolly's know you can help set up or clean up for SWAT (any help is appreciated).

Volunteer Instructors

SOUTH

Bill Hammack	512.282.0832
	tops tiny turnings
Stacey Hager	512.282.1036
	basics, spindles, sharpening, hollow vessels
Johnny Tolly	512.858.4471
	basics, open segmented
Jimmy Tolly	512.894.0686
	basics, platters
Craig Timmerman	512.288.3598
	basics, square turning, hollow vessels
Charlie Kay	512.295.2144
	boxes & bottle stoppers
H. O. Evans	512.282.2830
	segmented turnings
Jack Besperka	512.261.4682
	decoration & finishing

NORTH

Rusty Myers	512.218.1606
	basics, boxes, kitchenware
Frank Miller	512.335.4768
	basics, spindles, skew tops
Judy Williams	512.293.7479
	spindles
Jim Spano	512.835.5023
	novelty items, tops, shop gadgets
Len Brissette	512.258.4004
	bowls, platters, sharpening

ROUND ROCK

Larry Walrath	512.255.5379
	big vessels, bowls, platters
Ed Roberts	512.255.3294
	basics platters

LOCKHART/SAN MARCOS

David Dick	512.357.6517
	basics, spindles, architectural

April Member Gallery

I missed a multi-wood gallery this month so viewing the pictures was a fun way to attend the meeting; and to test my ability to identify peoples' turnings. First, **Mack Peterson's** caught my eye with his Padauk & Yellowheart; Bamboo, Ebony, Padauk; Bamboo, Yellowheart, Padauk; and then



the diversion from segments to a natural-edge elm bowl; and an elm vase. Or at least Mack thinks it's Elm. Lovely entries, Mack.



Jim Brinkman turned a multi-wood lidded bowl with finial. He chose Silverleaf Maple, TX Mesquite, and a delicate ebony finial. Finished with Beall. Nice! (easy to id tag)

Bill Kingsbury's Box Elder Root burl provided a nice bottom for this lidded box, the



Cherry top/finial compliments the wood coloring in the Box Elder, finished with wipe-on Poly. Look at the beauty of buffing the Poly.

H.O. Evans produced what he calls, "Little Indian Bowl." Once again, HO, nice work!



Jim Spano has beautiful lines on his hollow vases of Bois D'arc. I could tease him and tell him, "Hey Jim, it looks like you're designing a driving range." However, he is, as they say, a master. Plus, Jim tells good golf jokes. He finished these with Deft. Nice job, Jim.



Bob Elfort marked his tag sugar maple & mahogany. This is a lovely piece I'll mark as his.



Curtis Turner marked a "Curly Live Oak"



John Brengle's mimosa root bowl with an oil finish brings out the lovely lines of the mimosa bowl. (easy id tag and distinctive wood)



Bill Kingsbury labeled this beauty "Sugar Maple with tap holes." I'm taking a guess here on the wood. I had to research a cross section picture of the wood. This looks like a match.



Apr. Member Gallery
cont.

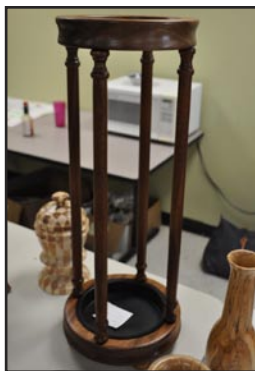
Eddy Butler has unique artistic sense that identifies his style, even though his tag only said, "African Mahogany" with beale. The African Mahogany may fade, but it has it's shining day today. Eddy, we should take this to AAW as well as SWAT.



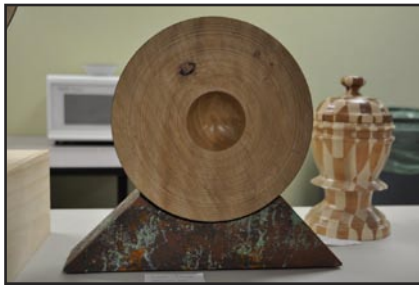
Doug Green spent 30 hours on this layered Ferris wheel. You can watch him on



YouTube URL
http://www.youtube.com/watch?v=BfCZpuFUT4U&feature=mfu_in_order&list=UL



and I'm pretty sure this is Doug's captured screw puzzle (unknown wood)



Lynn Kramer has a unbrick stand with Spanish Cedar and lacquer finish.



Orvis Vestal has a maple & walnut. This



looks like a rook, moving simultaneously

Photos

Photographs for this month's **Chip Pile** were provided by **Drew Shelton, Charles Kay, and Hilda Carpenter**. If you have digital photos that you would like to have considered for use in the newsletter. Send them to the Editor at hildac@mac.com.

through a three-dimensional chess board.

and a Pecan hollow turning.



John Wallace had two entries a cedar and turquoise plate, and a spalted pecan pot with brass inlay. This is the only picture that remained.

If the pictures are mis-marked—remember to mark your tags as specifically as possible and to make sure Drew captures your gallery entry! Arrive at the meeting early to ensure your entry is photographed!

Great gallery, I'm sorry I missed it, but my granddaughter was adorable!

Editor.

No labels for these:



Bring Back Raffle

Drew Shelton: This Thuya burl finished with walnut oil and wax is stunning. I vote for seeing more of your work in the gallery and thank you for your donation to the raffle! I know **Bill Kingsbury** will be happy to reciprocate with a turning of his own donated in next month's raffle.



John Brengle had a spill proof pecan stein finished in oil that **Gene Stokes** will be sipping from . . . depending on the oil.



Gene Stokes created this perfectly proportioned lidded box out of mesquite (looks like a burl) with an eucalyptus finial finished with kuipeon polyurethane. Look at

Jim Spano was busy with his off center chuck, and created this goblet made of Bois D'arc and Cherry finished with DEFT & buff ect. **David Dick** took this beauty home.



The cup is redheart and the stem is Lignum Vitae that **John Brengle** took home!

Not shown **Tim White** easter egg mesquite tung oil taken home by **Rob Rinca**.

As is the custom, each of the winners including Mystery Person (you know who you are, even if the Editor doesn't) will bring back a turned item to the next meeting. This is not a Judging contest! Your turning should be representative of your turning skill. If you don't have a lathe, or don't feel you have the experience, contact one of our volunteer instructors to help you prepare a Bring Back piece. So buy a ticket, get involved and have fun.

If you have a winning ticket from last month, then you need to bring back

an item for next month's meeting. OR, ask one of the officers or volunteers to help you or turn something for you. THANKS!—The Secretary/Editor

2011 Officers

President

David Dick
512-557-8609
thewoodwriter@yahoo.com

President Elect

Curtis Turner
512-914-1873
curtis_turner@sbcglobal.net

Program Chairman

Tim White
512.312.2572
twhite601@austin.rr.com

Secretary/Newsletter Editor

Hilda Carpenter
512.395-7782
hildac@mac.com

Treasurer

Ed Roberts
512.255.3294
eroberts6@juno.com

Membership Chairman

Pat Little
512-423-0508
patlittle46@yahoo.com

Webmaster

Larry Walrath
larry@larrywalrath.com
512.255.5379

Audio/Visual Coordinator

Frank Miller
512.335.4768
millerstexas@msn.com

Librarian

David Wolter
512.250.1912
dlwolter@swbell.net

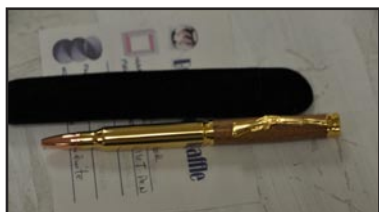
CTWA Web Site
www.ctwa.org

Editorial Information

This newsletter is by and for members. The Editor welcomes any written materials and will provide assistance with getting your information into publishable form if you want. **DEADLINE IS THE FIRST MONDAY OF THE MONTH.** Contact me with your ideas and drafts by phone at 512.395-7782, by E-mail at hildac@mac.com or mail them to:

The Chip Pile
c/o Hilda Carpenter
560 Moss Rose Lane

that finial! **Jim Spano** took this one home.



This handsome Ballet pen of mesquite and Deft created by **Bob Hreher** was scored by **Kimberly Shelton!**

Members in the News

Johnny & Marcia Tolly in Midland
by
Keith Hughes
Ernie Showalter

May 14th demonstration will be a highlight event. We will have a visiting turner from the Austin Texas area. **Johnny Tolly** and his wife **Marcia** will be here to present a special demonstration. Any one who attends SWAT will recognize what Johnny and Marcia do to make the Texas woodturning symposium second in the nation to the National symposium. If you see someone driving a forklift bringing in the lathes for the program, take a close look, it will likely be Johnny. Johnny and Marcia work all year in the background getting things organized for the August SWAT event.

One of Johnny's specialties is making Christmas ornaments. Not just any Christmas ornament. What he makes is one approximately one inch, that's one inch outside diameter with a 1/16 inch wall thickness through a small hole. Take a ruler and look close to 1/16 inch, that's next to no wood at all. How small a hole does he work through and what tools does he use? You will just have to come and see for yourself because I don't know.

Texas Technical Schools Association
TTSA
by
Hilda Carpenter

Some few thousand junior high school and high school kids entered various categories trying to win white, red, blue and best of state ribbons May 6th-7th in Waco, Texas. There were pens, roll-top desks, guitars, metal-works, compacts, armoires, etc. That was in the main symposium floor. Then in two of the Texas rooms down stairs there were houses made of popcicle sticks, house plans, and a thousand photographs to be judged. Our merry band from Austin were only part of the crew that served as the judges led by **Johnny and Marcia Tolly and Jimmy Tolly. Gene Stokes, Judy Williams, Steve Green, Hilda Carpenter** all pitched in where we could best serve our talents. Here are some pictures

Keeping Austin Turning Since 1988

of our crew eating the barbecue dining before beginning judging. As Gene



played with his new iPhone, **Jimmy Tolly** warned us not to sit in any of the kid's chairs. His experience last year proved that they might fall apart, regardless of weight (the student hadn't glued it together). Judy listens



intently. **Steve Green** is ready to go, and Hilda is having fun with her iPad.



We had a great time in Waco and served a good purpose for the kids.

Mesquite Harvest

by
Stephen Van Gee

Free wood is always a little tricky. It requires a lot of coordination.

Stephen Van Gee, Dennis Sneed and **Pedro Pacheco** made arrangements with Helen, the owner of a mesquite tree, to take it down at an appointed time. They arrived at that time to harvest the tree. . . The problem was they weren't sure they had the correct house number.

They stumbled onto a gentleman cleaning up brush. Sure enough they had the correct address—just plain luck.

Helen, the owner, was at the market and even though they had called her several times, they only received voice-mail. Later, they found out she had left her phone at home.

Our trio went ahead and cut the tree into several pieces and each of them took three to four pieces.

Stephen believes the tree had been down for some time. It has a hollow center, but it was a good mission as they cleaned up the tree and agreed to make Helen something from the wood.

Nice ending to a great old tree. I hope we can see some of that mesquite in the gallery, or bring backs, or SWAT!

AYW Needs Your Help
by
Hilda Carpenter & AYW

American Youth's goal was to raise \$100,000 for their campaign. They raised CTWA donated \$3,000 toward that effort. However, you may want to join in their effort, even though the campaign itself is closed. AYW had to close one of their schools downtown due to budget cuts in the Austin budget.

If you are interested as an individual in donating to this school, there is a way to do this. Did you know if you give a certain amount that money can be used to buy a laser for upgrading the woodturning efforts? Or, if you like, you can simply donate and have the money go to the general budget to buy a book, or supplies. However, Johnnie Perales would really like to buy a laser printer. Since CTWA already paid \$1,000 toward AYW, why not send \$2,000 and let's get Johnnie his laser? Ask **Doug Green** what a laser printer can teach the kids.

Go to the AYW to discover the difference that their services make to the community.

Did you know that they have a waiting list for their school? It would be such a shame for their services to be reduced because of a shortfall of money. They had to lay off teachers and close classes due to money shortfalls. It's a rough world in a 503(c), but this is a non-profit that is determined to make it through the rough times.

When I spoke to the key fundraisers of AYW, they told me that the collaboration pieces that we donate at the end of year, are auctioned off for really big money! They said that they would let us know (close the loop with us) the funds that they raised this year with the pieces we donated! So, be sure to enter your collaboration pieces.

However, what they need most right now is money. You can become a member of AYW by joining on their website to learn more about what they do for these amazing children.

A little jingle, a lot of jingle can open a class, buy some books, supplies, hire a teacher, open a classroom, admit a student—and get that laser printer for existing students so they are prepared for the real world.

Remember, if you want your gift to go to

the laser, be sure to put Johnnie Perales or "LASER" on the donation card. This reproduction did not scan very well, if you want

demonstrators?

Would you like the opportunity to try to

YES! Here is my special gift to provide life-changing programs for at-risk youth.



I would like to contribute \$ _____ to help provide a laser engraver for AYW youth.

Please charge my credit card. Visa / MC I have enclosed cash / check.

Card No. _____ **Exp.** _____ **CVV**(3 digit code on back) _____

For credit card processing, please ensure your name and address matches your billing statement.

Name _____

E-mail _____

Address _____

Phone _____

For more information, please contact Sharon Yarbrough, syarbrough@americanyouthworks.org, or 744.1908.

Donations are easy and secure online at www.americanyouthworks.org.

a better card, see Johnnie.

Club Demonstrators
by
Tim White, Program Director

CTWA MEMBERS:

We are currently looking for demonstrators for **June, July, and September** through **November**.

We've had a lot of outside demonstrators, and I need some help from the club to fill the gaps in the calendar. June and July are the highest priority.

If you would be interested in demonstrating, or know someone who might be, please let me know ASAP. Also, if there are any requests for topics, please suggest any that you may be interested in watching.

Feel free to reply to me directly—
twhite716@austin.rr.com

Thanks,

Tim White

Program Director
CTWA

Club Demonstrators
by
Hilda Carpenter

Did you know that many demonstrators have less than 5 years experience in woodturning?

Do you have a particular tool that you like to use?

Is there a technique you like to use that maybe you have not seen used by previous

demonstrate your technique? As you have seen, some of the most famous woodturners in the world blow up their work in front of us. Everyone understands—even the best woodturners have been there.

I hesitated to volunteer for a round of demonstration because I was afraid perhaps people wouldn't be interested in my technique. Then I started thinking about the application in terms of sidegrain with color. Color doesn't work with side grain. But acrylics do, especially when used with an airbrush.

So, I'm volunteering to Tim White, he can decide if he wants me or not, no hard feelings if he doesn't. I've been to some meetings that were boring to me. Some of you may find my presentation quite boring, until I blow something up. Just kidding. Jimmy has insured I won't go through the bottom of a bowl.

So, think about it, can you turn a bottle stopper? What finish do you use to keep it from dulling? Mine dull after I use shellawax, but I truly dislike CA. How about a tool holder? How do you get the hole in the middle? Mine is just off. And the darn holder is hard to find if I mis-measure.

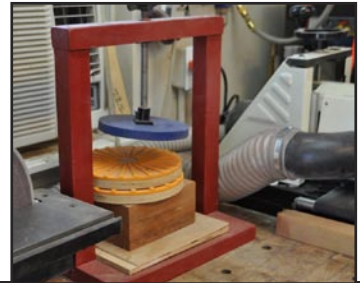
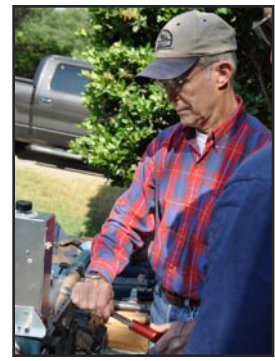
How about the elbow tool? I'd love to see "junior" learnings about the elbow tool. You know what I mean. The experts jump through the basics and go to the top end while I'm struggling with the pull that they already know is there.

Let's go newbies . . . Let's show the old guys what we don't know, but what we've learned. Or, you medium level turners show us the next path . . . We are all here together. Either way, there are around 55-60 of us who show up each month, let's at least make it entertaining. The experienced guys have NO excuse . . . show us the way. Pardon me, there are a few of you who do, but there are several who do not, I want to learn from all of you!

First Saturday May 7, 2011

May 7, 2011, First Saturday

Some 25 or 30 folks showed up at **James Patterson's** well stocked and well organized shop on May 7. There were five lathes running. **Kimberly Shelton** and **Stacey Hager** were turning bowls. **Frank Miller** was conducting perhaps his last seminar on the skew and various others were taking a crack at various turning projects. **Clyde Little** had to show off his battery powered mini-dust blower and **David Dick's** dog was showing off her ability to mind her own leash.



When the turning and talking were done, a dozen of us went to Chuy's for a fine lunch. It takes a while to get a table for twelve at Chuy's on a Saturday.

Thanks to James for hosting this event. His double garage shop is as well organized as **Jim Spano's**.

Membership in CTWA

We welcome NEW MEMBERS to join our band of merry turners anytime. An interest in woodturning is the only requirement. Dues are \$35.00 per year, prorated to \$3.00/month for new members. CTWA members are also encouraged to join the American Association of Woodturners, AAW. Those dues are \$38 online membership only, \$48.00 for individuals and \$50 for families. Your membership includes the AAW magazine, American Woodturner, a first-class quarterly magazine full of woodturning articles, tips and ideas with color illustration of the world's master turners' techniques. With our membership, whether you are experienced or a novice, we will teach you, or learn from you, and build long-lasting friendships based on a common kinship of matching wood, metal, machine and man, or woman as the case may be.

Volunteer Your Shop for First Saturday!

1. It doesn't need to be fancy, or big.
2. We'll bring the lathes.
3. You make the coffee.
4. We'll bring the donuts.
5. Have enough room for at least 1-2 turners (easy in the summer).
6. Let Len Brissette
lbrissette@austin.rr.com
know! Or email the editor.



Len Brissette

Classified Ads

Free personal classified ads are available to all members of CTWA to sell, buy or trade woodworking related items. To place an ad, contact Hilda Carpenter at hildac@mac.com or 512.395.7782. Ads will be run for two months, UNLESS OTHERWISE NOTIFIED, and then dropped.

FOR SALE:

- Parks 12" planer** with 12" jointer attachment.
- Delta 1" belt/ 5" disk sander** with stand.
- Meed telescope** (D=114mm, F=1000mm, f/8.8) with stand and Autostar Tracking.
- Coleman Angle Jig** for any radial arm saw.
- Skill Saw** 6 1/2", heavy duty, all ball bearing, all aluminum, model 552
- New Black & Decker saber saw** with dust collector, model JS 500
- 2 **Weed eaters** (Echo GT 200 BE) (Bolens BL100 17")
- 2 **Chain saws** (Echo 452 VL with 16" bar) (McCulloch CS38EM 38cc)
- 3 **Tillers** (Troy-built Horse 6 hp, Honda heavy duty 8hp FRC800
- Almost new, Mantis model 7222E cultivator**
- Johnson 3hp Seahorse outboard motor**
- Antique collections** - fans, typewriters, bottles, toasters, radio, accounting machine, oil heater, and more.

Call **Stacey Hager** for details
(512) 282-1036

FOR SALE:

720 Sq ft work shop with 10ft ceiling, 200amp service, 6" insulated walls, and central AC/heat. This comes with 4 bedroom house, 3 car garage on 1/3 acre tree covered lot in balcones country club neighborhood. Call Frank Miller 512-335-4768

FOR SALE:

DELTA TWO BAG 110v One hp DUST COLLECTION SYSTEM Mod. AP-400-Includes tubing, connections and two control valves. Used very little by an old man on days off--Way off! Will clean up and deliver. \$120.00 S. Gary Roberts - 345-1521 or <sgricr76@att.net> cones country club neighborhood. Call Frank Miller 512-335-4768

WANTED USED LATHE JET MINI
Contact Lily 512-618-3284

.....
Did you know we've sold PowerMatics, Novas, Jet Mini's, Planers, Power tools, and antique tools over the last year? All you have to do is write the editor: hildac@mac.com Let her know you want to sell something on the classified ads. Supply a picture and your sale goes faster.

The Chip Pile

Central Texas Woodturners Association
A chapter of the American Association of Woodturners

Hilda V. Carpenter
560 Moss Rose Lane
Driftwood, TX 78619

To:

Meeting Location

The CTWA meets at American YouthWorks, 1901 East Ben White Boulevard (Texas 71) in south Austin. The building is on the south side of Ben White, just east of Interstate 35. The best entry is off Woodward Street, just south of a little strip center. You enter an alleyway into a lighted parking lot. We will enter through the back door. As you drive in, you will see a truck dock in the back of the building with a big roll-up white door. The entryway is just to the right of the truck dock. Folks coming from the north may want to exit I-35 at Woodward and proceed south on Woodward across Ben White.

