



Keeping Austin Turning Since 1988

The Chip Pile

The Newsletter of the Central Texas Woodturners Association

Austin, Texas

A Chapter of the American Association of Woodturners

CTWA Meetings

February Meeting

Tuesday, February 16, 2010

7:00 - 9:00 PM American Youth Works

1901 E. SH 71, Austin, TX

1/4 mi. east of I-35 on south side of SH 71

1st Saturday Turnout

The 1st Saturday Turnout for March

will be at 9:00 am Location TBD

Watch for the email for location!

Don't forget our first president's challenge for 2010. "The Going Batty Club" will feature your baseball bats, night sticks, or caveman's clubs. If your project is a baseball bat you may want to turn a ball to go with the bat. There are no size restrictions for the projects. This challenge is just for fun so just let your creative thinking prevail. I look forward to seeing some interesting projects at our February meeting.

drinks. Trent Bosch in one of the nation's best known demonstrators so you will certainly want to attend this fabulous demonstration. The demonstration will be held at American Youthworks.

**Volunteer your shop
for First Saturday!**

From the President's Shop

Winter weather makes it pretty hard on some woodturners, especially those who have unheated shops. While my shop has a good heater I find myself less motivated to work in the shop during cold weather. Since I am writing these comments on a cold winter day, obviously I chose to remain in the cozy confines of my house for another day. If it is not warmer by tomorrow I will force myself to warm up the shop and make a few chips. The wife is threatening to get me out of the house or else! February is already here, the groundhog did something, so

warmer weather is just around the corner. Soon I will be complaining of the blistering sun and griping about my shop not having adequate air conditioning. Am I spoiled or what?

Last month we announced the beginning of

registration for the **Trent Bosch** hands-on classes that will be held at American Youthworks and **Clyde Little's** shop on **April 24, 25-26, and April 27-28**. Your response has been overwhelming. In fact, there are only a few remaining slots available. The second class, which is designed for advanced and intermediate turners is already full, but space is still available in the first class. We are attempting to place all of our less experienced turners in that class but we also have some very good turners scheduled in that class. **Trent Bosch** has stated that he can adjust to different skill levels. The cost for these classes is \$200. **Tim White** will begin accepting money at our February meeting, so bring your checkbook with you.

This month we will begin registration for the all day demonstration led by **Trent Bosch** on **Saturday, April 24**. Cost for the demonstration is only \$25 and includes a light lunch, along with coffee and donuts, as well as your favorite soft

Monthly Features

AAW Symposium, p 4
Business Meeting, p. 6
Bring Back/ Instant Gallery, p. 6
Calendar, p. 9
Classified Ads, p. 8
CTWA Dues, p. 3
Demo Schedule, p. 3
First Saturday, p. 7
Editor's "Turn", p. 3
Feature Presenter, p. 2
Members' Gallery, p. 5
Membership Information, p. 4
Members in the News, p. 8
President's Challenge, p. 8
President's Shop, p. 1
Rhapsody in Wood Show, p. 8
Service Opportunity, TSA, p. 6
SWAT, p. 4
This Month's Program, p. 4
Trent Bosch, p. 4,6
Volunteer Instructors, p. 9

The American Association of Woodturners is "Dedicated to Providing Education, Information and Organization to Those Interested in Woodturning." In keeping with the standards of our National Organization, the Central Texas Woodturners Association hereby gives permission for all other woodturning chapters, organizations, magazines and newspapers to use any materials contained herein for the benefit of all woodturners everywhere. We ask that credit be given for the source of the material.



January Demonstrator: *Anna Rachinsky by Chalres Kay*

Anna Rachinsky of the Hill Country Turners provided us with a fascinating demonstration at our January meeting, as she showed us how she makes her walnut cross-section jewelry.

Anna began by centering a scrap



wood blank between centers and roughing it to a cylinder and turning a tenon on one end. She then chucked the blank and turned a hole in the end to fit the nogalito (tiny wild walnut), about two-thirds



of the nut going into the hole with the "pointy end" out.



The nut is then glued in place with epoxy containing either tiny wood chips or brass shavings from a key grinder. The blank is then re-chucked and the end of the nut and the face are turned away very carefully, stopping often to check for the best design, generally the middle of the nut. Using a thin fluted parting tool, she then turns

three tiny beads on the face of the



cylinder around the nut. She then



uses a thin parting tool part a circa 1/16" disk off the end of the cylinder, taking care not to break or chip out the much harder nut as she goes through it.

The end of the cylinder, including the rest of the nut, is then trued up, removing the minimum material possible. Using double-stick tape, the disk is then reversed on the end



of the cylinder, trued up and three tiny beads added with the thin fluted parting tool, taking care not to go too deep.

The finished pieces are then finished with Wipe-On Poly for water resistance. They can then be turned into ear rings or pendants using common jewelry findings.

BIG TURNING

We got a "two-fer" at our January meeting, as Hill Country Turner, AAW, and CTWA founding member, **James Johnson**, entertained us with photos of his turning an 800 pound box elder blank into a very large hollow vessel. This entailed modifying his lathe using risers to accommodate the diameter of the piece. Further modification of the lathe became necessary after the spindle broke while he was turning the piece!



Visit Anna's online site at www.artisanrockyhill.com

Editor's "Turn"

Never to be thwarted against woodturning, I decided to attempt a bowl.

But first, I talked to my dear sweet face shield. I said, "I really need you to stay on my head and not be a distraction to my turning. No one is believing me when I say I screw up because of you." It was then that I re-discovered the adjustment at the top of the headgear. I snapped it to the smallest form—man I really do have a small head, or this thing is made for gorillas.

Armed with the tighter headgear and roughing gouge, I successfully achieved a nice smooth, round cylinder. I turned the tenon so I could remount it into the headstock. So far so good, the face shield is staying in place!

I cut the safety board—I don't actually know if this is what it's called, but I call it that since I turned the actual chuck with Steve's tool one time, and it's never been the same since. So I use my parting tool to separate a big hunk of wood to the size of the tenon to keep me from sliding off the left side of the project. It sort of looks like a big fan wheel. OK, ready to start turning turn.

I then drew out my shape, grabbed the spindle gouge and started to form the outside curve. OK, there were a few tool grabs, but overall, I did it. Success!! Only . . . the face shield is listing off to the right. Oh no. I ignore it.

The outside of my bowl, that looks sort of like a glass looks *GREAT!* I sand through the numbers, and now I'm ready to do the inside . . . how on earth do I hollow out this? Where is **Peter Hawkins** when I need him?

I go over to the drills and drill out a big chunk of wood about 4.5" deep. Then, I get the bowl gouge. The piece immediately pops off the chuck. Repeat process. Repeat popping. Repeat, repeat, repeat. I am nothing, if not patient. In the interim, I have realized I am at a 90 degree angle to the floor. My face shield has no chance whatsoever to stay on my head.

I've decided Gorilla Tape is the answer.

I take a break to eat lunch. Breaks are always healthy when frustration sets in.

While I eat, I remember a really nifty tool I used during the **Mark St. Leger** class. It was called a skewchigouge. I also remembered watching Janice Levi turn her pine lampshades. She talked about being a slow turner. Well, the skewchigouge would definitely make me a slow turner, but maybe it wouldn't put the torque on the bowl to make it pop off the chuck. So, I tried it—Success. Oh, my face shield still fell off, but the bowl stayed on.

Bit by bit the tiny bits of sawdust came out. Then Steve asked me if I wanted to use a Termite Tool! He handed me this strange, long tool that had a round tip. He showed me how to use it. Oh I thought I was in heaven and the bowl didn't pop off the chuck!!

I loved the aggressive nature of the thing. I felt like the Terminator taking out huge chunks of Maple! I turned off

the lathe. I just knew the bottom was oh so thin. The calipers didn't agree with my assessment. And the bottom didn't look like the other woodturners at all. Oh, and my face shield had fallen off sometime during the demolition.

I used the skewchigouge to clean up some of the major grand Tetons that I'd created, then went back to the Termite, hoping to thin out the bottom some more.

One of **Binh Pho's** requisites is to turn a 1/32 inch bowl. Oh Dear. I'm a long way from that. I decided to set a much lower goal for myself. Mine is about 1/2 inch. But for my first bowl-that-looks-like-a-glass, I'm stopping. I was ready to end it. I sanded the inside, but the bottom still looked funky. I'll ask my buddies in CTWA what to do about that. I put my face shield back on, went over with my parting tool and heard Steve shriek. "Don't you think you need a tool rest?!" I guess all that Terminator stuff went to my head. The bowl is still on the work table until he returns from his **Stephen Hatcher** class (he needed the chuck).

So, what does this pitiful story have to do with you? Woodturners in the CTWA are truly very good, yet they suffer from an interminable flaw of low self-esteem. I saw this when I coached executives in High Technology. When people have to put themselves out on a personal front, it's scary. It's even intimidating.

All I can tell you is, looking from my place on as the objective observer of all the good woodturners—go for it! Start simple. Put something in a raffle, someone would love your work. Put something in the CTWA gallery. Then go ahead and put something in the SWAT gallery or AAW gallery. If you are waiting to be asked—consider yourself asked.

CTWA & AAW Dues

ANNUAL DUES were due in January and need to be paid to Tim White. Please write your \$35 check to CTWA. This allows you to join AAW and attend the symposium in June, as well as receive all the benefits. **From AAW:** We appreciate you and your local chapter's support of AAW. We have been working on expanding AAW membership benefits. Two changes for 2010 we are excited to offer are the journal going to 6 issues per year and the development of a vendor discount program. All memberships are on a yearly basis from January 1 through December 31. [Please click here](#) to renew your membership online. Thank you for promoting the benefits of AAW membership.

Demonstration Schedule CTWA Meetings

February	Johnny Tolly
March	Mike Hunter
April	TBD
May	TBD
June	TBD

If you are interested in demonstrating at one of our meetings, or if you want to suggest a demonstrator, get in touch with Program Chairman, Tim White.

February Demonstrator: *Johnny Tolly*

Johnny lives near Dripping Springs Texas with his lovely wife Marcia, Marcia is Johnny's main



inspiration and supporter of his creative woodturning endeavors. Johnny is also very proud of his 26 year service to his country in the United States Air Force, retiring as a Senior Master Sergeant in 1993. He saw combat action both in Viet Nam and during the first Gulf War. Currently, he is a Senior Equipment Maintenance Technician and has worked for Freescale Semiconductor in Austin, Texas for 16 years.

A woodturner for 26 years, Johnny is associated with various organizations: the American Association of Woodturners, World of Woodturners (WOW), South West Association of Woodturners, Central Texas Woodturners Association of Austin, and the Texas Mesquite Association. In this time, Johnny has created numerous masterpiece turnings.

Johnny is creative and has a keen eye for form and design elements. He has turned one piece wooden bowls, vases and unusual things like his Texas Sized Big Bug. He has made closed and opened segmented items as well. They range from vases, bowls, football, globe, table lamps, floor lamp and others. He won awards at the Woodworkers show of Austin. His Globe called, Johnny's World Full of Holes and his Texas Mesquite Floor Lamp both won awards.

Johnny has written several HOW TO ARTICLES that are on the web, www.turningwood.com and has had articles were published in the American Woodturner magazine and the Woodturning Design magazine. Some of his work may

be seen at www.ctwa.org, and at www.woodturners.org. His articles in Turning Wood are professional, clear and illustrated. I encourage you to investigate them.

He provides countless hours of service to SWAT, and the Texas Technology Association among other worthy projects.

This past year at SWAT Johnny and his wife Marcia were chosen among the gallery participants to show their work at AAW headquarters for a year.



The AAW has been conducting annual symposia since 1987. The next one is June 20, 2010. Just in time for the Summer Texas heat! Registration is open for Hartford, CT by going to www.woodturner.org/sym/sym2010/

You will need to make sure your CTWA and AAW dues are current. There are several reasons to attend this international symposium. First, you will have the opportunity to witness some of the master woodturners. Second, you'll meet new friends. And third, you'll come away with inspiration to try new



ideas and possibly create that masterpiece you always wanted to create!

To join AAW, you simply need to have a current membership in CTWA.

SWAT—not too early

It's not too early to start thinking about Waco! This year the Southwest Association of Turners. SWAT comes in September, a month earlier than earlier years. I frankly love SWAT, which is what is going to get me to the AAW Symposium in Hartford. I like the demonstrations, the gallery, and mostly—the turners.

I encourage you to enter something into the gallery. Our monthly members' gallery competes with those entered at SWAT. Even I entered! I was selected to bring something back for the 2-for-one raffle this year. Oh dear. So please come and watch the fun. You might even win a lathe in the big raffle! But come!

Membership in CTWA

We welcome NEW MEMBERS to join our band of merry turners anytime. An interest in woodturning is the only requirement. Dues are \$35.00 per year, prorated to \$3.00/month for new members. CTWA members are also encouraged to join the American Association of Woodturners, AAW. Those dues are \$45.00 for individuals and \$50 for families. Your membership includes the AAW magazine, American Woodturner, a first-class quarterly magazine full of woodturning articles, tips and ideas with color illustration of the world's master turners' techniques.

With our membership, whether you are experienced or a novice, we will teach you, or learn from you, and build long-lasting friendships based on a common kinship of matching wood, metal, machine and man, or woman as the case may be.

Drew Shelton,
Membership
Chair, dcshelton@gmail.com

January Member's Gallery



Peter Hawkins turned this hollow form of spalted sycamore.



Mac Petruso brought black palm and EZ rough scraper.

Ben Warren had an array of pens finished in CA and friction polish.



David Dick's spindle skills were clear with his long-stemmed goblets and gavel finished in tung oil.



Joe Kirk's hackberry Easy wood mini tool was envied by more than one woodturner!



Always original, **Mack Peterson** created a Texas 42 Domino Bowl out of Paduck, Yellowheart and Walnut. This deck took more than 42, try 514 pieces!



Ho Evans mastered both form, design, and the segmented turning with his Butterfly vase made from Wenge and Maple finished with Deft. We should expect to see this at the SWAT gallery,



right, Ho?

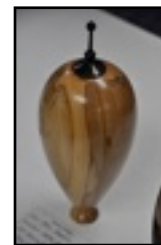
Peter Hawkins veered from his open form style to this Ash Vase shape. What made this difficult was the wood was punky. He finished with S/B and Beal.



Mesquite is known for its magical quality in turning. **Ed Roberts** captured it perfectly in this Vase/ Container using wipe on poly.



Peter Hawkins used texturing & ebonizing techniques on the top and bottom rims. He ebonized the finial of this mesquite hollow form.



In this mesquite branch burl, Peter simply noted "hollow form with voids."



Tim



White turned Bubinga and Abrosia Maple bowls and finished with tung oil.

Mack Peterson created South Texas Snowman out of Pear and Walnut.



Johnnie Pernaes created a container from unknown wood, and the form is very catenary.

Vessel Debris woven from James giant box elder!



January *INSTANT* Gallery

For those of you who may not know what a bring back, OR instant gallery is, it is simply a very cool way to win a wonderful woodturning by one of our own members. You might win a tool, or possibly a piece of wood! How can you win—you buy raffle tickets at the meeting. What do you do if you win? You bring something back the next month for someone else to win! Well, unless you are a visitor, or guest. Then one of the officers will turn something for you.

Anyway, it is a lot of fun, and it's a great way for our club to raise money for our needs, like guest presenters, parties, or tools! So thank you for participating. Both turners and participants alike!

There were 4 “bring-back” pieces this month.



Stephen Van Gee turned a beautiful cedar box finished with Minwax. **Gary Roberts** was the lucky winner!

Jim Patterson turned 2 bottle stoppers and 1 wine stopper made



from various woods. This first wine stopper is made from

bloodwood finished in wax. **Ed Roberts** will have a nice topper to his finest as the winner of this beauty!

Jim's walnut bottle stopper is also finished with wax and was taken home by **Jeff Chapman**.



Jim's third bottle stopper is cedar, finished with wax and was won by **Joe Kirk**.

Business Meeting by **Charles Kay**

There were 54 people at our January 19 meeting, including four visitors. New President **Gene Stokes** presided.

Gene reminded us that it is time to pay our 2010 dues. Please pay Membership Chairperson **Drew Shelton** if you haven't already done so. Gene also reminded members that membership in the American Association of Woodturners (AAW) is highly encouraged and very important to the club as whole because of the liability insurance coverage we receive if we are a 100 per cent AAW club.

Gene and Program Chairperson **Tim White** discussed the **Trent Bosch** demonstrations and hands-on sessions coming up at the end of April. The all-day demo session on Saturday, April 24 will be \$25 per person including lunch. Hands-on sessions will be April 25 and 26 for Beginners and Intermediates and April 27 and 28 for Intermediates and Advanced at a cost of \$200 per person. Make reservations with Tim.

Finally, Gene reminded us of his first President's Challenge, set for the February 16 meeting, the “Going

Batty Club.” See details elsewhere in the Newsletter.

Trent Bosch Sessions

Just a quick reminder that you may email **Tim White** if you want to sign up for one of the sessions with Trent Bosch.

Date	Session	Cost
4/24	Demo (includes lunch)	\$25
4/25 – 4/26	Beg/Inter	\$200
4/27– 4/28	Inter/Adva	\$200

You can pay at the club meeting in February or March. Make checks payable to CTWA. when you email **Tim White**, please indicate which sessions you plan to attend. twhite601@austin.rr.com

Service Opportunity by **Johnny Tolly**

It is that time of year when we call for judges for the Texas TSA State Contest (Technology Students Association). It will be held at the Heart of Texas fair complex in Waco May 6-8 2010. We need as many judges as we can get on Friday evening starting at 5 PM, earlier if you can. We can pay for a hotel room for you if you want to stay over and we will feed you that evening.

Please let us know if you can help out the youth of Texas TSA this year. If you would like more information about this marvelous organization, you can see their handbook by going to http://www.texastsa.org/publications/texas_tsa_version_12_handbook.pdf or speaking with **Johnny Tolly** johnntolly@austin.rr.com

First Saturday

There were 2 first Saturday's since the last newsletter! Due to the delay in January, we caught up with a great time at Orlando Banos shop, then **Clyde Little** hosted February's. I can't wait for March's meeting to learn about my new **Binh Pho** scraping tool. Here are a few pictures of the fun at Orlando's. Please volunteer your place, so all turners can gather. I found out you don't have to be a beginner, intermediate or expert. It is just for people who love to turn! If you see TBD in the newsletter for the site, the look for an email letting you know where it will be.

January 9 First Saturday by Charles Kay

Some thirty or so folks turned out on a cold Second Saturday for our January First Saturday event. It was held at **Orlando Banos'** big shop, with all the humungous tools. Orlando put one of them to work, using a big press to straighten the 12" tool rest for **Mack Peterson's** big **Oneway**. Frank Miller was making spindles and **Stacey Hager** was turning a hollow vessel. **Kimberley Shelton** spent her time turning a pen. The rest just wandered around gossiping and eating Round Rock donuts, courtesy of **Drew Shelton**, and drinking coffee. When all was said and done, eight or ten of us headed to Mighty Fine on Brodie for hamburgers.



No report on February meeting held at **Clyde Little's**

Rhapsody in Wood

Mike Chambers said that they still have openings for turners who would like to exhibit or compete.

The North Texas Woodcarvers Guild Presents



36th Annual Woodcarving Event

Classes:

March 3, 4 & 5, 2010

Cabela's Sporting Goods
12901 Cabela Dr.
Ft. Worth, Tx
(I-35W and Tx170)

Show and Sale:

March 6 & 7, 2010

Saturday 10am-5pm
Sunday 11am-4pm
Grapevine Convention Center
1209 S Main St
Grapevine, Tx
Admission: \$3 (under 12 free)

For more information call: Flo Morrison 817-703-5530
Email: NTXWoodcarvers@aol.com
Web: www.ntxwoodcarvers.com

Classified Ads

Free personal classified ads are available to all members of CTWA to sell, buy or trade woodworking related items. To place an ad, contact Hilda Carpenter at hildac@mac.com or 512.395.7782. Ads will be run for two months, UNLESS OTHERWISE NOTIFIED, and then dropped.

FOR SALE: CLEAN/LIKE NEW Parts Bins

(12Wx21Hx6D) w/ (60) clear plastic drawers (2Wx5 1/2Lx1 1/4D) approx. inches. \$11 each. Al @ 512/864-0876 gaskell@verizon.net Sun City.

FOR SALE: E-Z UP 10'x10' tent/canopy complete with four sides, awning and carrying case. Tent and sides are in excellent condition. Carrying case has a tear in it by the handle. This is the basic E-Z UP that is sold at Sam's Club. \$150 BO. Will throw in four small PVC pipe weights for free. **Contact Craig Timmerman** 512.773.9976 or armadilloww@gmail.com

FOR SALE: Delta Model DC33 13" 2 HP heavy cast iron planer, extra bade et, roller infeed and outfeed tables, mobile base. \$300

Atlas Model 6001 6" jointer, new 1 HP Baldor motor, mobile base. \$125.

Contact Hilda Carpenter at 512-395-7782 or hildac@mac.com

GOING BATTY CLUB PRESIDENT'S CHALLENGE FEB 16 MEETING

This is your chance to practice your spindle turning skills. Your challenge is to turn a baseball bat and you can get extra credit if you turn a ball to go with your bat. Any size bat is acceptable. A miniature bat from your mini lathe is perfectly ok. Notice that in keeping with the title of the challenge you also have the option of turning a caveman's club, nightstick, or just about anything that will pass as a club or cane.

Bring your finished product to the regular meeting on **February 16**. This challenge is strictly for fun. There will be no categories to enter or prizes to win. Just let your creative juices flow.

I really hope my mallet (to keep my face shield in place) qualifies.

Member News

David Dick reports on February 2nd **HO Evans** did a demo for the Woodworkers Club of Austin. Some of the fellows have been turning simple segmented bowls and cups for several months. They really were wowed by the pieces Ho showed them. It will be fun watching these new woodturners in the months to come. Several have joined CTWA and I think more will. Let's make sure they feel welcome.

A group of about too many to count gathered for **Bill Hammack's** 80th Birthday on January 30th. The woodturners congregated and agreed that we didn't recognize him without his ball cap, but that he looked darned good. Then we went on to talk about all our scars, lost fingernails, blood, and cauterized wounds. The youngest of us, however, **Trevor White**, had the best emergency room tales. **Bill Hammack**, who probably had some good tales himself, was too busy greeting guests to trade yarns with us. Perhaps we can get Bill and Trevor together to compare scars someday. Now that would be a good tale to hear. My father always said, "Never let the truth get in the way of a good story." I'll remind Bill and Trevor of that before they start.

David Dick's Dallas Demo (try saying that fast 3 times) went well. He completed a 17" high goblet on a mini-lathe using Jelutong (a carvers' wood). Now he has a request to demonstrate for the N. Texas Group! Congratulations, David!

2010 Officers

President

Gene Stokes
512.288.3598
gstokes1@austin.rr.com

President Elect

David Dick
512-557-8609
thewoodwriter@yahoo.com

Program Chair

Tim White
512.312.2572
twhite601@austin.rr.com

Membership Chair

Drew Shelton
dcshelton@gmail.com

Secretary/Newsletter Editor

Hilda Carpenter
512.395-7782
hildac@mac.com

Audio/Visual Coordinator

Frank Miller
512.335.4768
millerstexas@msn.com

Librarian

David Wolter
512.250.1912
dlwolter@swbell.net

CTWA Web Site www.ctwa.org

Larry Walwrath, Webmaster
wood@larrywalwrath.com

Editorial Information

This newsletter is by and for members. The Editor welcomes any written materials and will provide assistance with getting your information into publishable form if you want. DEADLINE IS THE FIRST MONDAY OF THE MONTH. Contact me with your ideas and drafts by phone at 512.395.7782, by E-mail at hildac@mac.com or mail them to:

The Chip Pile
C/o Hilda Carpenter
560 Moss Rose Lane
Driftwood, TX 78619

Volunteer Instructors

South

Bill Hammack 512.282.0832
(tops, tiny turnings)
Stacey Hager 512.282.1036
(basics, spindles, sharpening, hollow vessels)
Johnny Tolly 512.858.4471
(basics, open segmented)
Jimmy Tolly 512-894.0686
(basics, platters)
Craig Timmerman 512.288.3598
(basics, square turning, hollow vessels)
Charlie Kay 512.295.2144
(boxes, bottle stoppers)
H.O. Evans 512.282.2830
(segmented turning)
Jack Besperka 512.261.4682
(decoration & finishing)

North

Rusty Myers 512.218.1606
(basics, boxes, kitchenware)
Frank Miller 512.335.4768
(basics, spindles, skew, tops)
Judy Williams 512-836-7897
(spindles)
Jim Spano 512-835-5023
(novelty items, tops, shop gadgets)
Len Brissette 512.258.4004
(bowls, platters, sharpening)

Round Rock

Larry Walrath 512.255.5379
(big vessels, bowls and platters)
Ed Roberts 512.255.3294
(basics, platters)

Lockheed/San Marcos

David Dick 512.357.6517
(basics, spindles, architectural)

2010 Calendar

Feb 16, 7 PM - 9 PM
CTWA Mtg.
Amer. Youthwks
"Going Batty"
President's Challenge

Mar 6, 9 am-noon
1st Sat
Location TBD

Mar 16, 7PM - 9 PM
CTWA Mtg
Amer. Youthwks

Apr 3rd 9 am - noon
1st Sat
Location TBA

Apr 13, 7 PM - 9 PM
CTWA Mtg
Amer. Youthwks

Apr 24,25-26,27-28
Trent Bosch Wkshops
Clyde Little's
Amer. Youthwks

May 3rd 9 am - noon
1st Sat
Location TBA

May 17 7 PM - 9 PM
CTWA MTG.
Amer. Youthwks

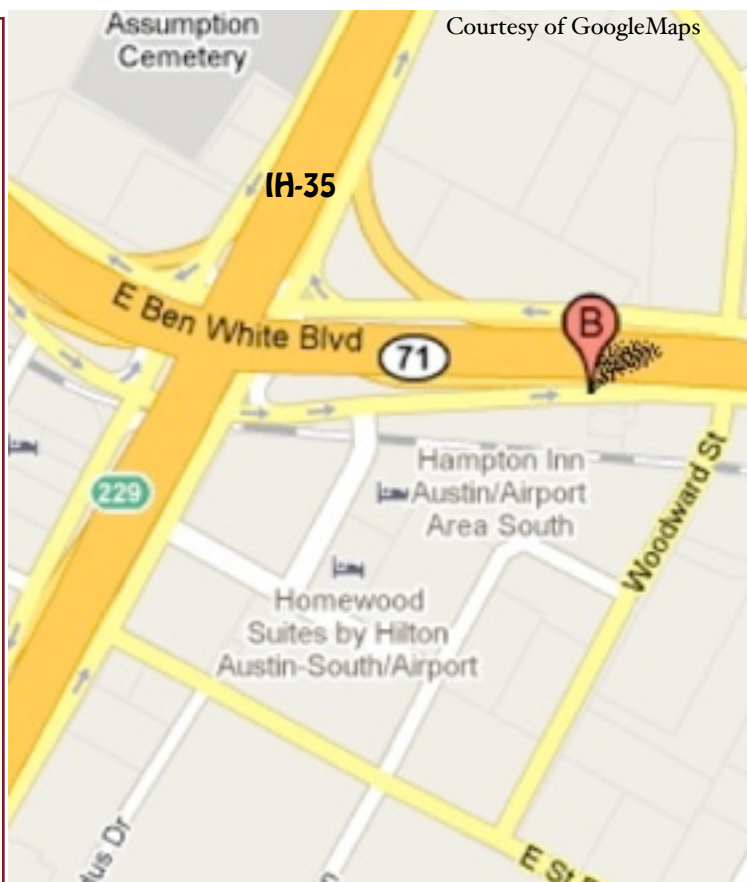
Jun 5, 7 PM - 9 PM
1st Sat
Location TBD

Jun 15 7 PM 9 PM
CTWA Mtg
Amer Youthwks

Jun 20 AAW SYMPOSIUM
HARTFORD, CT

Meeting Location

The **CTWA** meets at American Youth-Works, 1901 East Ben White Boulevard (Texas 71) in south Austin. The building is on the south side of Ben White, just east of Interstate 35. The best entry is off Woodward Street, just south of a little strip center. You enter an alleyway into a lighted parking lot. We will enter through the back door. As you drive in, you will see a truck dock in the back of the building with a big roll up white door. The entryway is just to the right of the truck dock. Folks coming from the north may want to exit I-35 at Woodward and proceed south on Woodward across Ben White



The Chip Pile

Central Texas Woodturners Association
A Chapter of the American Association of Woodturners

Hilda Carpenter, Editor
 560 Moss Rose Lane
 Driftwood, TX 78619