



# The Chip Pile

The Newsletter of the Central Texas Woodturners Association

Austin, Texas

A Chapter of the American Association of Woodturners

CTWA Meetings

## MARCH MEETING

Tuesday, March 18, 2008

7:00 - 9:00 PM

American YouthWorks - Austin, Texas

1901 East SH 71

(about 1/4 mile east of I-35 on south side of SH 71)

## FIRST SATURDAY TURNOUT

The First Saturday Turnout for April will be at 9:00 AM on April 5, at Larry Walrath's shop, 2301 Walsh Drive, Round Rock

From the President's Shop

## Back to Basics

March's First Saturday was a great example of the diverse things you can see and learn at a First Saturday get together. Of course it helps when the shop you visit is one like Stacey Hager's, one full of all kinds of tools and gadgets, but still. Here is a list of just a few of the things that you could see: sand-blasting, metal lathe work, tool grinding and, believe it or not, woodturning.

In the woodturning category there were various small projects including some spindle work. The latter was of particular interest to me as I don't do a whole lot of it. Frank Miller brought his assortment of skewers and was helping Jim Spano

get a clean cut on a laminated spindle that contained a combination of grain

orientations. Frank then showed how you can actually round a square spindle blank using the skew and the clean cuts that can result. Jim tried it first and then he handed the skew to me to try. Now, the use of the skew is not what I would consider to be one of my strong points as a wood turner. I have certainly made my share of unintended spirals using one, but I figured that this is what First Saturday is for. The main thing Frank showed me was to get rid of the "death

grip" I normally use when holding the skew; just relax and take light cuts. This made a big difference and soon I was passing the skew on to Drew who passed it on to someone else. We all got a chance to try several different types of skewers doing different cuts and while our cuts weren't perfect, we all certainly lost a lot of the fear-factor involved in using the skew before the session was over. What I took home from this was that I need to take the time to just work on some of these skill building tasks. I am going to find a couple of hours a week and just get

back to basics and work on some of these techniques. I encourage you to do the same; perhaps we can even share a few skill building projects at our next Show and Tell.

Craig

February Demo

Versatile CTWA turner **Stacey Hager** showed us another of his many talents at our February meeting. Using a piece of European boxwood and numerous visual aids, he showed us how to hand chase threads.

Stacey took us through preparing the blank and making the box. Then he sized the tenon on the top for the male threads and the inside of the top for the female threads. Then he proceeded to thread



both. Although he had prepared us for the possibility that this step might not work out, the threading went very well.

Stacey told us that the most common thread sizes are 20 TPI and 16 TPI. The depth of the thread is determined by multiplying the number of threads per inch by 0.866. He likes to turn at about 500 RPM. Faster speeds

## Monthly Features

- Calendar, page 5
- Classified Ads, page 8
- Demo Schedule, page 5
- First Saturday, page 6
- Membership Information, page 8
- Shop Crawl Schedule, page 6
- This Month's Program, page 4
- Volunteer Instructors, page 8

The American Association of Woodturners is "dedicated to Providing Education, Information and Organization to Those Interested in Woodturning." In keeping with the standards of our National Organization, the Central Texas Woodturners Association hereby gives permission for all other woodturning chapters, organizations, magazines and newspapers to use any materials contained herein for the benefit of all woodturners everywhere. We ask that credit be given for the source of the material.

# 2008 Officers

## President

Craig Timmerman  
512-288-3598  
armadilloww@gmail.com

## President Elect

Clyde Little  
512.413.6931  
clyde2044@yahoo.com

## Program Chairman

Gene Stokes  
512.288.3598  
gstokes1@austin.rr.com

## Secretary/Newsletter Editor

Charlie Kay  
512.295.2144  
ckay@austin.rr.com

## Treasurer

Ed Roberts  
512.255.3294  
eroberts6@juno.com

## Membership Chairman

Jim Spano  
512.835.5023  
jimjoy@austin.rr.com

## Webmaster

Larry Walrath  
larry@larrywalrath.com  
512.255.5379

## Audio/Visual Coordinator

Frank Miller  
512.335.4768  
millerstexas@msn.com

## Librarian

Betty Hager  
512.282.1036  
staceyhager@hotmail.com

## CTWA Web Site

[www.ctwa.org](http://www.ctwa.org)

## Editorial Information

This newsletter is by and for members. The Editor welcomes any written materials and will provide assistance with getting your information into publishable form if you want. **DEADLINE IS THE FIRST MONDAY OF THE MONTH.** Contact me with your ideas and drafts by phone at 512.295.2144, by E-mail at [ckay@austin.rr.com](mailto:ckay@austin.rr.com) or mail them to:

**The Chip Pile**  
c/o Charles Kay  
100 Matzig Cove  
Buda TX 78610-3108

## Keeping Austin Turning Since 1988

mean clean cuts, but slower speeds make the thread chasing easier to control. Stacey says that the secrets to hand chasing threads are a light touch, relaxed control and lots and lots of practice. The best woods for threading are boxwood and African blackwood - or any kind of wood with enough CA glue!



Thanks to Stacey for another fine demonstration. We look forward to the next item he will pull out of his bag of tricks.

## Bring Back Raffle

**Jane Miller** was the lucky winner of a bubinga and blackwood tea light, turned by **Joe Kirk** and finished with Hut's wax. **Jim Roby** took home an elegant purpleheart finial box turned by **Jerry Whiteaker** and finished with wax. **David Dick** was the winner of a hackberry pepper mill turned by **Charlie Kay** and finished with Waterlox. **Kathy Powell** had the winning number for an IOU from **Barry Groten**.

As is the custom, each of the winners will bring back a turned item to the next meeting.



The Bring Back items should be representative of each person's best work.



It should be noted that the Bring Back Raffle is meant to be a fun event. No one is grading you on the quality of your work. Just bring a piece that represents the best that YOU can do. If you don't have a lathe or don't

feel like you have enough experience, contact one of our Volunteer Instructors to help you prepare a Bring Back piece. So buy a ticket, get involved and have fun.



Show and Tell

**Gene Stokes** brought along bowl turned from zebrawood that had been Beall buffed.



**Ed Roberts** showed off a virge turned on commission from mesquite with a maple cross, finished with shellac.



**Stacey Hager** brought three pieces, a light thin platter turned from but-



ternut and finished with Waterlox, a long, thin finial turned from black wal-



nut and French polished and cocobolo threaded box finished with wax.



**H. O. Evans** brought a pair of wine goblets with holly, walnut and ebony segmented bases and stems, as well as a 1/2 cup measuring cup to go



with the 1/3 cup he brought last month. This time, he also brought the detailed calculations for size.



**Max Baker** brought along a platter turned from ash and finished with walnut oil.



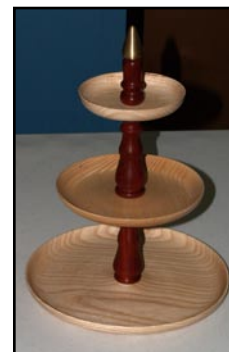
**Dennis Sneed** showed a number of items: spin tops and a wine stopper turned from mesquite and finished with lacquer, a magnifying glass handle of maple finished with lacquer, a "flying" lidded box of maple and a pair of mesquite tool handles turned from mesquite.



**Johnny Tolly** showed a mesquite burl bowl turned for the annual auction at the Lady Bird Johnson Wildflower Center.



**Lynn Kramer** brought along a two-tiered server of ash and bloodwood and a "brown" wood bowl, both finished with Hut's.



Larry Walrath showed off a nice mesquite bowl and a pair of egg cups, all turned from ash and finished with tung oil.



There were two additional pieces for which no ID slips were provided. Sorry I cannot credit the artists.



be teaching a three-day hands-on class.

The hands-on workshops will address as many of the topics as can be fit



into the time allotment. There will be plenty of one-on-one instruction, and students are encouraged to try a variety of small projects designed to help develop tool handling skills, a greater



understanding of wood, sharpening, and cutting dynamics; and the possibilities that these techniques can add to your work.

The demonstration sessions will run from 9:00 AM to 4:00 PM on both Saturday and Sunday, April 19 and 20 and will be held at our regular American YouthWorks meeting site. The cost for the demonstrations will be \$25 per day per person. Lunch will be served each day for an additional cost of \$5 per day per person. The hands-on classes will run from 9:00 AM to 4:00 PM on Monday, April 21 through Wednesday, April 23. You will need to supply your own lathe, which can be a mini-lathe. The club mini lathe will be available if you don't have one of your own. A location for the class has not yet been determined. It is preferred that you sign up for all three days of the class. If you cannot attend for all three days, we will put your name on a waiting list as those who can attend all three days will get priority. Cost for the class is \$350 per person.

To sign up for the demos and/or classes see **Jim Spano**. If you haven't already paid, try to remember to bring your checkbook to the meeting.

For more information on Michael and the events, check the February issue of *The Chip Pile* on our web site, [www.ctwa.org](http://www.ctwa.org).

February Program

## Turning with Corian

Our demonstrator for our March meeting will be the talented **Andy Chen**, a member of both the Hill Country Woodturners in Kerrville as well as the woodturning group in College Station. He will be demonstrating the turning of Corian.

Andy has been interested in woodworking since high school. Woodworking became his obsession when he moved to Texas in 1979. He dabbled in woodturning for a few years while building furniture. He began turning seriously in 1992, primarily segmented work, because at the time he only had a multi-purpose machine, which was too light and was only able to handle constructed blanks that were already balanced. Since the acquisition of a heavy-duty lathe in the spring of 1998, he has been enjoying many forms of turning. He also enjoys turning materials other than wood, a favorite being Corian®. His greatest interest in turning still lies in segmented vessels. Corian turnings are segmented out of necessity because of the limited thickness of the material. In addition to woodworking and turning, Andy enjoys designing and making tools.

Michael Mocho

## Spring Demos, Classes Set

Just another reminder that **Michael Mocho**, from Albuquerque, New Mexico, will be here on April 19th and 20th for two full days of demonstrations. Following that, Michael will



Business Meeting

We had 52 attendees at our February 19 meeting, including three visitors.

**Craig Timmerman** filled us in on the planned Michael Mocho demonstrations and hand-on workshops coming up in April.

**Steve Gottlieb** updated us in on the 2008 SWAT organizing Board meeting held in January in Waco. SWAT will be held in Waco this year, October 17 - 19. The biggest change this year, besides the new venue,

will be a different format for the raffle of turned items. A limited number of selected items will be individually raffled separately

Craig announced that Andy Chen will be our demonstrator for March. Since

Andy needs more than the usual hour for his demo, we will have an abbreviated business meeting in March. In addition, members are asked to limit themselves to no more than three Show and Tell items, and will only be allowed to discuss one of them.

mately \$220 for a steel hub wheel plus \$10 for an arbor. The plastic hub wheels are \$30 less. Final cost will be determined based on the exchange rate at the time of purchase and how many people order. If you would like one of these wheels see Stacey.

some of our early Bring Back pieces were. No one will be judging you on the quality of your work, and many of us have pieces that track the progress of various members' skills over the years

So have fun and participate.

Craft Shows

### Walrath at Warrenton

**Larry Walrath** will be demonstrating at the craft fair at Porter Family Farm in Warrenton, Friday March 28 and Saturday March 29. In addition, there will be antiques, metal art, glass art, pottery, pressed flowers and watercolors. There will be a number of other craft-people demonstrating how they do their work.

For more information, check out PorterFamilyFarm.com.

Club News

### Shortened Show & Tell

This month we are going to try something different during our Show and Tell time. We need to allow a little more time for this month's demonstration, so for Show and Tell we would like you to bring no more than three items. Then during the Show and Tell time, you will be asked to pick your favorite of the pieces you

brought and talk only about that one piece. This will give us some more time for the demonstration and still keep the overall length of our meeting about the same. If this concept works this month, we will use it any time we have a longer demonstration.

In the Magazines

### Doug Green Recognized

**Doug Green** has been recognized for his Shop Tip of the month in **Wood** magazine in its May issue. His tip features an easy way to remove a platter from a sacrificial face plate without risking marring the bottom of the platter. For his effort, Doug won a Leigh Super 12 Dove tail jig and accessories.

Congratulations to Doug for his suggestion and the well deserved recognition.

### Bring Back IOUs

There have been at least one or two IOUs in the Bring Back Raffle at the last two or three meetings. Remember that the success of the Raffle depends on your bringing an item back. If you are a visitor or don't have a lathe or the necessary skill, let Craig or Clyde know. If you want help preparing a Bring Back item, they will help you find some one to assist you. If you are a visitor, let Craig or Clyde know that as well, and one of the officers will bring an item for the next month's Raffle.

Remember, the charge is to bring an item that represents *your* best work. We have members with many different levels of experience and you don't need to feel that you must match the quality of the more experienced turners. All of us remember how primitive

Group Orders

### Diamond Grinding Wheels

**Stacey Hager** is putting together another order for diamond grinding wheels. A number of us in the club have purchased these wheels and really like them. They never have to be dressed and therefore retain the same size and shape throughout their lifetime, which should be a very long

time. They come in a wide range of grits, although most of us use the 180 grit. There are two styles, one with a steel hub and one with a plastic hub. They aren't cheap, but they will probably last a lifetime. Cost is approxi-

## Calendar

The calendar listings are an attempt to keep you up to date on upcoming CTWA events, as well as other events of particular interest to woodturners.

**March 18 - 7:00 PM to 9:00 PM**  
CTWA Meeting - American YouthWorks

**April 5 - 9:00 AM to Noon**  
First Saturday - Larry Walrath's shop

**April 15 - 7:00 to 9:00 PM**  
CTWA Meeting - American YouthWorks

**April 19/20 - 9:00 AM - 4:00 PM**  
Michael Mocho Demos - American YouthWorks

**May 3 - 9:00 AM to Noon**  
First Saturday - Clyde Little's shop

**May 20 - 7:00 to 9:00 PM**  
CTWA Meeting - American YouthWorks

## 2008 Demonstration Schedule

**March 18**  
**April 15**  
**May 20**  
**June 17**

**Andy Chen**  
**John Horn**  
**To be announced**  
**To be announced**

If you are interested in being a Demonstrator at one of our meetings, or want to suggest a demonstrator, get in touch with **Program Chairman Gene Stokes**.

March First Saturday

Our April 5 First Saturday Shop Crawl will be held at **Larry Walrath's** shop, 2301 Walsh Drive in Round Rock (512.255.5379).

To get to Larry's place, take I-35 to FM 1431 and go west to Sam Bass Road, Turn right on Walsh Drive and his house will be on the left. This is an opportunity to see a great example of a real working shop. No frills, but lots of production. As most of you know, Larry is a prolific turner and does a fair bit of commission work. This should be an interesting First Saturday session.

A map is shown below and you can always call if you get lost.

Web Site

Check out the CTWA Web Site at [www.CTWA.org](http://www.CTWA.org). If you have comments, suggestions or something for the Gallery, get in touch with **Webmaster Larry Walrath** at [larry@larrywalrath.com](mailto:larry@larrywalrath.com).

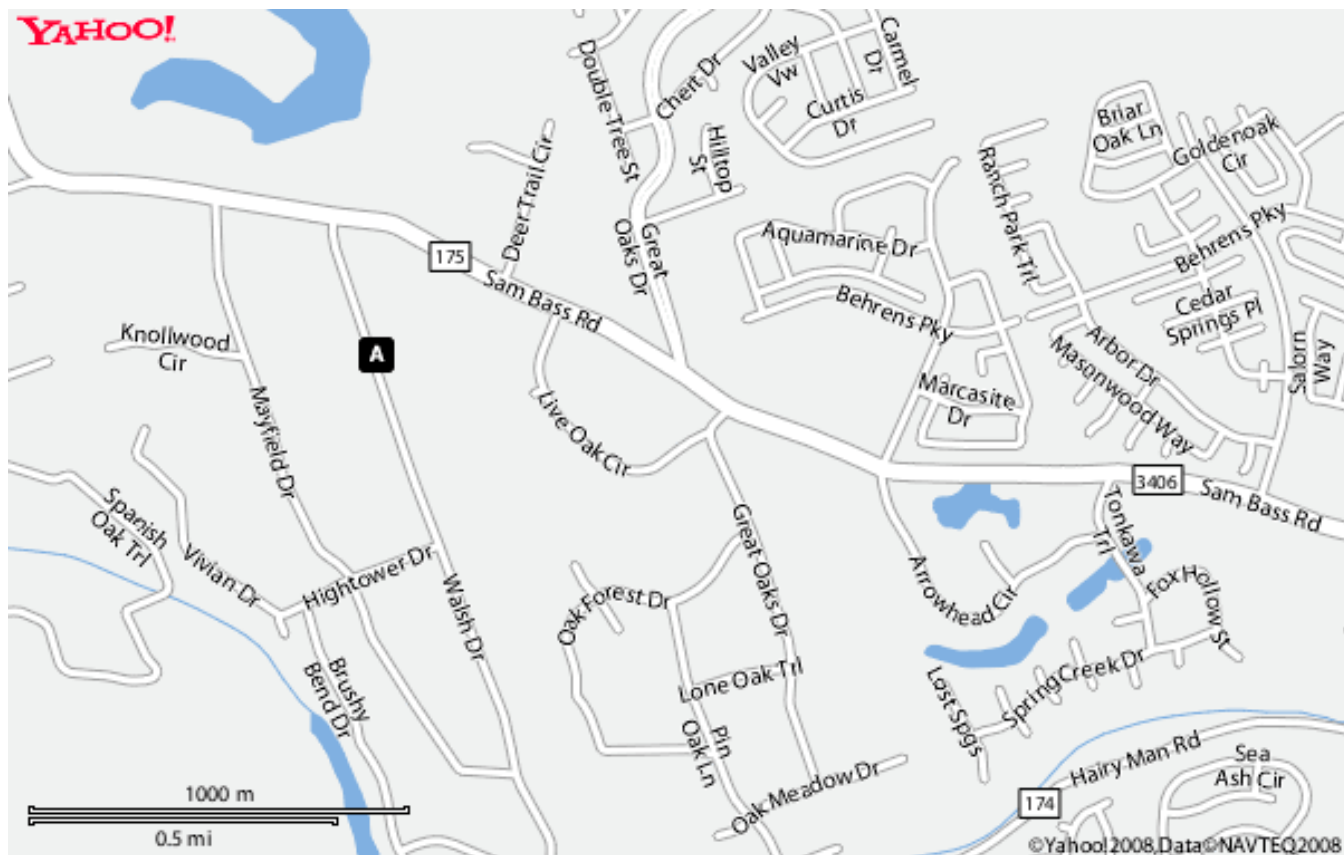
Photos

Photographs for this month's **Chip Pile** were provided by **Drew Shelton** and **Charlie Kay**. If you have digital photos that you would like to have considered for use in the newsletter. Send them to the Editor at [ckay@austin.rr.com](mailto:ckay@austin.rr.com).

**2008 First Saturday Shop Crawl Schedule**

<p>April 5 May 3 June 7 July 5</p>	<p><b>Larry Walrath</b> <b>Clyde Little</b> <b>Bill Hammack</b> <b>Volunteer Needed</b></p>
--	---

As you can see, we have a serious shortage of sites for this popular event for the rest of the year. You don't have to have a fancy shop to host it, just a place for folks to congregate and drink coffee, eat donuts, and maybe for one or two to turn. To volunteer to host a First Saturday Shop Crawl, get in touch with Len Brissette.



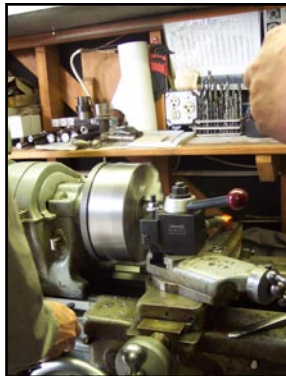
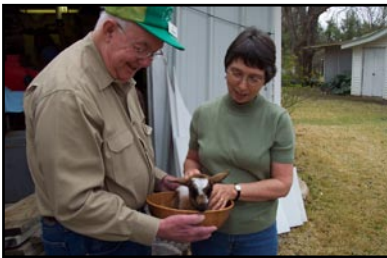
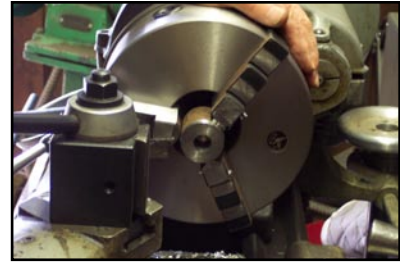
E-mail

It is your responsibility to see that Membership Chairman **Jim Spano** has your correct E-mail address. You can contact him at [jimjoy@austin.rr.com](mailto:jimjoy@austin.rr.com). We regularly use E-mail to advise members of important announcements on short notice. If Jim doesn't

have your current E-mail address, we can't contact you.

Some two dozen folks turned up at **Stacey Hager's** shop on March 1 to enjoy the beautiful spring weather and the new kids on the block. One of them even took time to pose in **Bill Hammack's** big bowl, with **Betty Hager's** assistance. **Frank Miller** was conducting another tutorial on the fine art of the skew, with a number of eager learners. Somehow most everyone found **Drew Shelton's** Round Rock donuts. **Craig Timmerman** was particularly enamored of Stacey's new sandblaster box and several folks pitched in to help Stacey machine spacers for the diamond wheels on his machine lathe. There were several folks looking for assistance in sharpening tools, and Stacey left the finish work on the machine lathe to **Les Brissette** and leapt into the breach. With Betty in the background with her whip, Stacey had a big pile of wood from his stash piled out in front of the shop. A number of folks picked up pieces to take home. So, presuming they don't just store them as Stacey did, we should start seeing some Show and Tell items show up described as being turned from Stacey wood.

As usual, the yarn swapping exceeded the turning, but we all had a good time. After the session was done, about fifteen of us repaired to the Vietnamese restaurant on William Cannon for an excellent lunch.



If you have lived in Texas long enough, you have become accustomed to the many strange twists of Texas weather. Unlike most parts of our country, the seasons here seldom behave in an orderly fashion. Just when you think spring has arrived, we get another freeze, followed a few days later by temperatures in the 90s. More than any place I have ever lived, the old Texas adage seems to hold true: "If you don't like the weather, just wait awhile and it will change."

Despite the vagaries of Texas weather, spring is again upon us without a doubt. That raises my mood from the winter doldrums and makes me

want to get out in the shop and work on some projects I have been musing over for awhile. Unfortunately, or some would say fortunately, it also raises the mood of the landscaping as well. So I put off the trips to the shop to work in the yard. First there was new deer netting to put on the high fence around the garden. The old netting had finally deteriorated in

the harsh sun to the point where it was almost more patches than netting. Then it was time to prune lots of stuff back and haul several pickup loads of mulch to hold down the weeds and hold in the moisture. From the looks of things, that is more likely to be moisture from the well than moisture from the sky.

Meanwhile, the burn pile of prunings keeps piling higher and higher, waiting for the end of the burn ban. If it ever rains, it's going to make a nice bonfire, aided by the wood that I have allowed to sit around and spoil. Somebody remind me to never again agree to take free green wood just because a tree is down somewhere!

The nice weather has also had me strolling around the property from time to time and I have picked up another half-dozen mistletoe burls in fallen limbs from the cedar elm trees. These make nice bottle stopper blanks and are probably the wood most chosen by my customers. They have lots of character, with voids, mistletoe roots and lots of color variation. Speaking of bottle stoppers. I have already turned several out of what I am calling Stacey wood I and Stacey wood II, as I failed to ask their iden-

tity when I rescued them from the pile at the First Saturday at his shop. One of them is beautiful, but so punky it takes a thimbleful of CA glue to make a bottle stopper.

Time to put this issue to bed and get it to the printer. See you on Tuesday evening.

Keep on turning,

Charlie

We don't recognize often enough those businesses that support our club. If you don't already do so, be sure to support those folks that support us, either through discounts or gift certificates.

**Woodcraft  
Craft Supplies USA  
The Cutting Edge**

## Volunteer Instructors

### SOUTH

Bill Hammack 512.282.0832  
 Stacey Hager 512.282.1036  
 Johnny Tolly 512.858.4471  
 Jimmy Tolly 512.894.0686  
 Craig Timmerman 512.288.3598  
 H. O. Evans 512.282.2830

**NOTE:** Ho would like to confine his assistance to his specialty, segmented turnings.

### NORTH

Rusty Myers 512.218.1606  
 Frank Miller 512.335.4768  
 Judy Williams 512.836.7897

### ROUND ROCK

Larry Walrath 512.255.5379

### LOCKHART/SAN MARCOS

David Dick 512.357.6517  
 Curtis Seebeck 512.738.0775

## Membership in CTWA

New members are welcome to join CTWA at any time. All you need is an interest in woodturning. CTWA membership also requires membership in the American Association of Woodturners (AAW). Local dues are \$25.00 per year, or \$2.10 per month, prorated for new members joining during the year. AAW dues are \$40.00 per year for individuals and \$45.00 for families. For that, you get a first class quarterly magazine, **American Woodturner**, with excellent articles on woodturning and woodturners, amply illustrated with color photographs.

To learn more about membership or want to join CTWA, contact our Membership Chairman:

**Jim Spano**  
 11904 Glenda Court  
 Austin, TX 78753  
[jimjoy@austin.rr.com](mailto:jimjoy@austin.rr.com)  
 512.835.5023

## CLASSIFIED ADS

Free personal classified ads are available to all members of CTWA to sell, buy or trade woodworking related items. To place an ad, contact Charlie Kay at 512.295.2144 or via E-mail at [ckay@austin.rr.com](mailto:ckay@austin.rr.com). Ads will be run for two months and then dropped.

**FOR SALE:** Powermatic dust collector; Model 45, stock number 1791071, 220-3 hp single phase motor, two upper collection 5 micron filter bags, two lower 20 cubic feet collection bags. Five year factory warranty. MSRP \$1170, Internet \$930.00, asking \$725. Accessories and 80 feet of 4" pvc pipe and fittings included. Used very little, but will not fit my shop.

Contact Larry Roberts at [woodturnlarry@sbcglobal.net](mailto:woodturnlarry@sbcglobal.net).

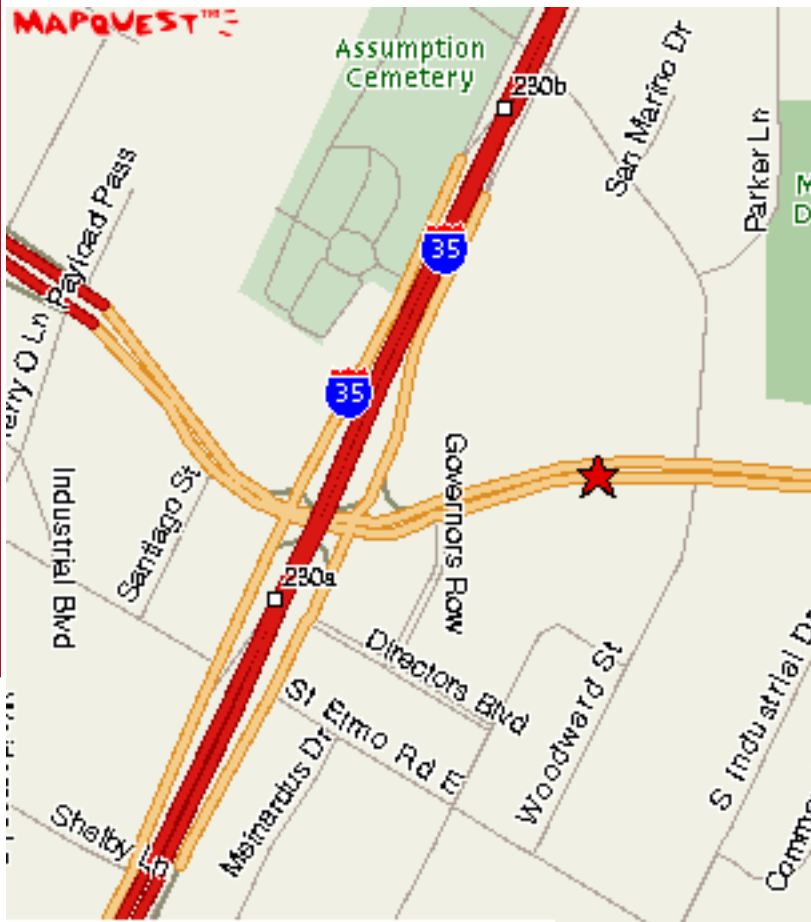
**FOR SALE:** Oneway laser arm in excellent condition. It does not include the laser pointer, just the arm and instruction sheet.

Contact Steve Gottlieb at 512.266.7722 or [sgottlieb@austin.rr.com](mailto:sgottlieb@austin.rr.com).



### Meeting Location

The CTWA meets at American Youth-Works, 1901 East Ben White Boulevard (Texas 71) in south Austin. The building is on the south side of Ben White, just east of Interstate 35. The best entry is off Woodward Street, just south of a little strip center. You enter an alleyway into a lighted parking lot. We will enter through the back door. As you drive in, you will see a truck dock in the back of the building with a big roll-up white door. The entryway is just to the right of the truck dock. Folks coming from the north may want to exit I-35 at Woodward and proceed south on Woodward across Ben White.



The Chip Pile  
Central Texas Woodturners Association  
A chapter of the American Association of Woodturners

Charles Kay, Editor  
100 Matzig Cove  
Buda, TX 78610-3108

To: