



The Chip Pile

The Newsletter of the Central Texas Woodturners Association

Austin, Texas

A Chapter of the American Association of Woodturners

CTWA Meetings

NOVEMBER MEETING

Tuesday, November 20, 2007
7:00 - 9:00 PM
American YouthWorks - Austin, Texas
1901 East SH 71
(about 1/4 mile east of I-35 on south side of SH 71)

FIRST SATURDAY TURNOUT

The First Saturday Turnout for January will be at 9:00 AM on January 5, at a location to be announced.

From the President's Shop

Details, details, details ...

As it stands now, I've made a very meager attempt to respond to my own President's challenge of making bracelets. I'm still working on making wooden chuck jaws. The bracelets, just to be clear, are to be brought to the NOVEMBER meeting. Got that, Charlie?

November's First Saturday was at **Dennis Sneed's** shop. And a fine shop it is, too. Several of us started off by giving him lots of unsolicited advice on how to turn one of the Australian burls he bought at SWAT. I bought several of those myself and so far have been too much of a coward to turn any, but I'm perfectly willing to tell someone else what to do with theirs. **Clyde Little**

Boat House Grill for a very good lunch.

Just a reminder to everyone - there will be no First Saturday nor a regular meeting in December. The only get-together we have in December is the club Christmas party, which will be at Frank and Jane Miller's house this year. More details will be forthcoming, perhaps elsewhere in this issue.

Drew

Monthly Features

- Calendar, page 5
- Demo Schedule, page 7
- First Saturday, page 6
- Membership Information, page 4
- Shop Crawl Schedule, page 6
- This Month's Program, page 4
- Volunteer Instructors, page 7

brought the club's Jet mini because **Len Brissette** couldn't come, and **Frank Miller** used it to turn an ultra-thin goblet. By Dennis' request, **Stacey Hager** turned a sphere on Dennis' Stubby. Stacey neglected to bring his micrometer, so Dennis had to be satisfied with a sphere that was only 99.9998% round. And for an encore, Stacey used a chain saw to slice one of Dennis' large mesquite crotches right along the plane of the piths. We then adjourned to the

October Demo

Make mine apple!

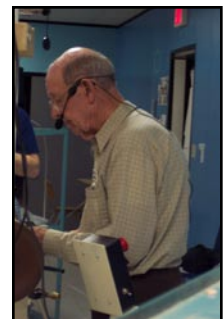
At our October meeting we were honored to have CTWA and AAW Founding Member and Master Turner **Gary Roberts** as our demonstrator.

Gary showed us how to make a replica of an antique pie crust crimper. The gadget was his interpretation of one he had seen in a museum, and is used to seal the top crust of a fruit pie to the lower crust after the filling is in place.

Gary showed us how to turn the various the handle and the crimping wheel. He then layed out the notches on the crimping wheel using a simple shop mad indexing wheel applicable to any lathe. After the notches were laid out and cut, he then showed us how to lay out and drill the holes in the notch in the handle and the center of the wheel, then used a small length of brass rod.



Unfortunately, Gary's demonstration didn't extend to making a pie to show how the device really works. He did assure us, however, that presentation of this implement to the right person can assure a steady supply of



The American Association of Woodturners is "dedicated to Providing Education, Information and Organization to Those Interested in Woodturning." In keeping with the standards of our National Organization, the Central Texas Woodturners Association hereby gives permission for all other woodturning chapters, organizations, magazines and newspapers to use any materials contained herein for the benefit of all woodturners everywhere. We ask that credit be given for the source of the material.

2007 Officers

President

Drew Shelton
512.863.4651
dcshelton@gmail.com

President Elect

Craig Timmerman
512-288-3598
armadillow@gmail.com

Program Chairman

Gene Stokes
512.288.3598
gstokes1@austin.rr.com

Secretary/Newsletter Editor

Charlie Kay
512.295.2144
ckay@austin.rr.com

Treasurer

Ed Roberts
512.255.3294
eroberts6@juno.com

Membership Chairman

Clyde Little
512.413.6931
clyde2044@yahoo.com

Webmaster

Larry Walrath
512.255.5379
larry@larrywalrath.com

Audio/Visual Coordinator

Frank Miller
512.335.4768
millerstexas@msn.com

Librarian

Betty Hager
512.282.1036
staceyhager@hotmail.com

CTWA Web Site

www.ctwa.org

Editorial Information

This newsletter is by and for members. The Editor welcomes any written materials and will provide assistance with getting your information into publishable form if you want. **DEADLINE IS THE FIRST MONDAY OF THE MONTH.** Contact me with your ideas and drafts by phone at 512.295.2144, by E-mail at ckay@austin.rr.com or mail them to:

The Chip Pile

c/o Charles Kay
100 Matzig Cove
Buda TX 78610-3108



apple pie. He even brought along his favorite apple pie recipe to share!

The apple pie recipe was part of Gary's



explanatory handout. Your editor had a copy of that at one point, and intended to rely on it for this write-up, as well as to include the apple pie recipe in the newsletter. Unfortunately, his copy has mysteriously disappeared.

Bring Back Raffle

Rich Fleming was the lucky winner of a lidded pot of ash and red tipped photinia, turned by **Richard Anderson** and finished with lacquer. **Richard Anderson** then took home a tiger maple spiral goblet turned by **Dave Dick**. **Joe Kirk** was the winner of a beautiful tool handle of mesquite with tiger maple and wenge inlay turned by **John Thompson**, and finished with Waterlox and wax. Finally, Charlie Kay picked up a packet of mesquite pen blanks brought by Kirt Reed.



As is the custom, each of the winners of the turned items will bring back a turned item to the next meeting. The Bring Back items should be representative of each person's best work. Kirt says that Charlie Kay is off the hook for a bring back item.



It should be noted that the Bring Back Raffle is meant to be a fun event. No one is grading you on



the quality of your work. Just bring a piece that represents the best that YOU can do. If you don't have a lathe or feel like you have enough experience, contact one of our Volunteer Instructors to help you prepare a Bring Back piece. So buy a ticket, get involved and have fun.



Show and Tell

Stan Spell brought along a bowl turned of myrtle and finished with lacquer.



Making the mistake of believing what he reads in the newsletter, **Larry Walrath** showed off his entry in the President's Challenge bracelet contest. You were expecting something tiny from Larry? We hope he brings it back to the November

meeting to compare to the puny entries from the rest of us.



James Norton brought a pair of platters, one of bubinga and one of mahogany, both with nicely decorated bottoms. They were finished with oil and Beall buffed.



Mack Peterson showed off a tall hackberry vase and a figured walnut platter.



Charlie Kay brought a lidded bowl of partridge wood, with a patinated walnut top, finished with Waterlox and buffed.

There were at least two other items on the Show and Tell table, but either there were no cards

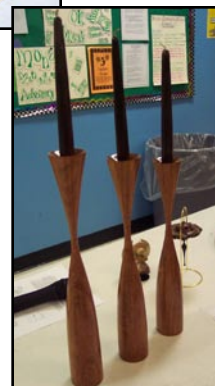
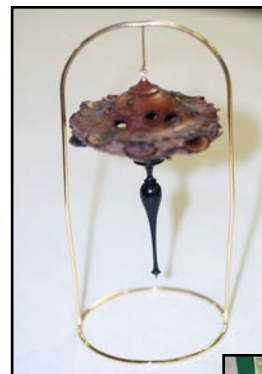
for them or the same villain that got my copy of Gary's hand-out got those cards as well.



I believe that the segmented bowl was brought by **Jake Ivey**, but I cannot remember who brought the lidded box. Sorry, folks.



Rude Osolnik candlesticks, with a special addition. SWAT banquet table mate **Gary Roberts** turned some beautiful Texas ebony candles to complete the look. Thanks to Gary for the addition.



CTWA Supporters

We don't recognize often enough those businesses that support our club. If you don't already do so, be sure to support those folks that support us, either through discounts or gift certificates.

**Woodcraft
Craft Supplies USA
The Cutting Edge**

Web Site

Check out the CTWA Web Site at www.CTWA.org. If you have comments, suggestions or something for the Gallery, get in touch with **Webmaster Larry Walrath** at larry@larrywalrath.com.

SWAT Swag

As noted in last month's issue, CTWA members did pretty well in the Two-for-One raffle at the SWAT Symposium in Wichita Falls. Big winner **Clyde Little** brought along his **Cindy Drozda** banksia pod Christmas ornament and his **T. W. Furr** angel ornament. **Charlie Kay** brought along his **Uel Clanton** turned

Grinding away

When I told Gene Stokes several months ago that I would do the November demonstration, it was my plan to do something aimed at beginning turners. I had thought to do a box or lid-ded bowl, perhaps.

However, in preparation for the Christmas season, I have been turning some pepper mills, so I have decided to make a pepper mill for my demonstration this month. Although it looks to be a bit complicated, it is really a straightfor-



ward turning project, requires little in the way of special tools and the resulting piece makes a desirable gift.

Charlie Kay

We had 47 attendees at our October 16 meeting, including three visitors.

Johnny Tolly advised members that SWAT is proposing to hire a part-time assistant to help with administrative chores in 2008. The consensus of the membership is that CTWA should support that proposal.

President Drew Shelton secured nominations of the candidates for officers for 2008. The election will be

at our November 20 meeting. The nominees are:

President - Craig Timmerman
President Elect - Clyde Little
Program Chairman - Gene Stokes
Secretary - Charlie Kay
Treasurer - Ed Roberts
Membership Chairman - Jim Spano

Webmaster - Larry Walrath
A/V Coordinator - Frank Miller
Librarian - Betty Hager

In addition, **Jake Ivey** and **Delano Mireles** volunteered to understudy Betty Hager in the Librarian job in 2008.

Librarian Betty Hager announced the addition of five new DVDs to our library:

Jimmy Clews - Turn It Up 1, 2 and 3
(donated by Johnny and Marcia Tolly)

Binh Pho - Surface Design on Thin Wall Turning

Cindy Drozda - Turn a Fabulous Finial Box

David Marks - Gilding and Chemical Patination

Alan Batty - The Skew Chisel
(donated by Dennis Sneed)

Drew reminded us that CTWA dues for 2008 are now due. You may pay them directly to Membership Chairman **Clyde Little**. Your AAW dues for 2008 are also due. You should go ahead and pay your AAW dues, either on line or by using the mail-in form that came with the last issue of *American Woodturner*. As we did last year, if you need help with handling the AAW dues payment, our Membership Chairman will give you a hand.

And This Time I Mean It!

Your Editor is now officially on probation. I had my bracelets turned in September and I want to get on with this thing. You can take it from the President's mouth (or at least his column on page 1) that the President's Bracelet Challenge will take place this month. Really.

President **Drew Shelton** has issued the first Challenge of his fast waning term. Drew wants you to turn a bracelet for the

November meeting. The rules seem to be simple, as there are none. You've seen examples of bangle bracelets by several members, but nobody says you have to make a bangle. How you decorate, embellish or desecrate it is limited only by your imagination. Categories to be devised by the President as he surveys the entries.

Prizes, if any, to be awarded at the discretion of the judge, the aforementioned President.

This should be fun, so bring your most creative attempts. As usual in these challenges, we expect at least a little outrageousness.

It is your responsibility to see that Membership Chairman **Clyde Little** has your correct E-mail address. You can contact him at clyde2044@yahoo.com. We regularly use E-mail to advise members of important announcements on short notice. If Clyde doesn't have your current E-mail address, we can't contact you.

Photographs for this month's **Chip Pile** were provided by **Drew Shelton** and **Charlie Kay**. If you have digital photos that you would like to have considered for use in the newsletter. Send them to the Editor at ckay@austin.rr.com.

Membership in CTWA

New members are welcome to join CTWA at any time. All you need is an interest in woodturning. CTWA membership also requires membership in the American Association of Woodturners (AAW). Local dues are \$25.00 per year, or \$2.10 per month, prorated for new members joining during the year. AAW dues are \$40.00 per year for individuals and \$45.00 for families. For that, you get a first class quarterly magazine, **American Woodturner**, with excellent articles on woodturning and woodturners, amply illustrated with color photographs.

To learn more about membership or want to join CTWA, contact our Membership Chairman:

Clyde Little
14307 Geronimo
Volente, TX 78641
clyde2044@yahoo.com
 512.413.6931

2008 Officers

Our official election of our CTWA Officers for 2008 will take place at the November meeting.

Under our By-Laws, **President Elect Craig Timmerman** will become President. In addition, the following folks have agreed to be nominated to serve as officers for 2008. You will recognize most of these as carryover officers.

President Elect - Clyde Little

Program Chairman - Gene Stokes

Secretary - Charlie Kay

Treasurer - Ed Roberts

Membership Chairman - Jim Spano

Webmaster - Larry Walrath

A/V Coordinator - Frank Miller

Librarian - Betty Hager

The floor will be open for additional nominations, but if you intend to nominate someone from the floor, you should have their permission in advance.

Calendar

The calendar listings are an attempt to keep you up to date on upcoming CTWA events, as well as other events of particular interest to woodturners.

November 20 - 7:00 to 9:00 PM
CTWA Meeting - American YouthWorks

December 8 - 9:00 AM to Noon
Christmas Party - Frank & Jane Miller's

No Regular meeting in December

Jan 5, 2008 - 9:00 AM to Noon
First Saturday - to be announced

Jan 15, 2008 - 7:00 to 9:00 PM
CTWA Meeting - American YouthWorks

February 2 - 9:00 AM to Noon
First Saturday - to be announced

February 19 - 7:00 to 9:00 PM
CTWA Meeting - American YouthWorks

2007 Christmas Party

As is our custom, there will be no regular meeting in December, nor will there be a First Saturday get together. Instead, the annual CTWA Christmas Party will be held on Saturday, December 8 at the home of Frank and Jane Miller. Spouses are welcome. As usual, the club will provide the meat, the drinks, the utensils, etc. You will need to plan to bring a covered dish to go with the meats. A sign-up sheet for covered dishes will be provided at the November meeting.

The Miller's are located at 9704 Talleyran Cove in Austin. Take Spicewood Parkway south off Anderson Lane between US 183 and RR 620. Follow it to Talleyran Cove and turn left. If you get lost, the phone number is 512.335.4768.

Folks will begin gathering at 9:00 and we will plan to eat about noon. There will be turning available in Frank's nice shop, and he can probably accommodate a mini-lathe or two. We look forward to a big turnout.



Membership Activities

Membership Chairman Clyde Little has been busy, as if rebuilding his burned home wasn't enough to do. By now you should have gotten the group E-mail with your Excel copy of the latest version of the CTWA Roster. Thanks to Clyde for a job well done. You should check your information and let Clyde know if there are any changes that need to be made.

If you haven't already paid your 2008 CTWA dues, you can pay Clyde at the November meeting. He will have his laptop computer at our November meeting to assist those folks who need assistance in paying their AAW dues on line.

November First Saturday

Our November 3 First Saturday took place at **Dennis Sneed's** fine shop, with twelve or fifteen folks showing up. **Frank Miller** brought along some fresh cut yaupon holly to share with the vultures, then turned a thin stemmed goblet out of a piece of it. Apparently this was costly wood, however, with **Jane** deciding to see if she could fly while cutting on the tree, winding up with a broken arm. At Dennis' request, **Stacey Hager** used the Stubby to turn a sphere. Not content with that demonstration, Stacey then took up the chain saw and proceeded to split a big mesquite crotch down the pith lines to maximize figure. **Bob Duncan** brought along the wooden jaws he had made for his Stronghold to use to make bangle bracelets. Despite the fact that there were talented carvers there, **Charlie Kay** was attempting to show Dennis a bit of how to approach carving. When all was said and done nine of us repaired to the Boatyard Grill for lunch, while Dennis headed to the coast to do some fishing.



2007 First Saturday Shop Crawl Schedule

December 8 (Christmas Party)
January 5, 2008
February 2, 2008
March 1

Frank & Jane Miller
Volunteer Needed
Volunteer Needed
Volunteer Needed

As you can see, we have a serious shortage of sites for this popular event for the rest of the year. You don't have to have a fancy shop to host it, just a place for folks to congregate and drink coffee, eat donuts, and maybe for one or two to turn. To volunteer to host a First Saturday Shop Crawl, get in touch with Len Brissette.

Youthworks Auction

Our members contributed eleven pieces valued at some \$1,800 for the annual YouthWorks Benefit Auction. Those contributing pieces were:

Betty Hager - Bluebonnet painting

Joel Crabbe - maple & pau shell bowl, mulberry, copper and cocobolo bowl

Stacey Hager - multi-colored closed vessel

Stan Spell - mesquite ring holder

Ed Roberts - mesquite finial box

Charlie Kay - mesquite and Texas ebony lidded bowl

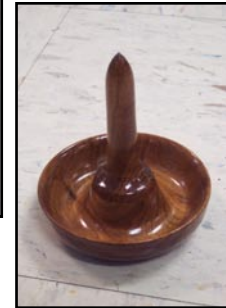
Drew Shelton - spalted maple and ebony closed vessel

Bob Hrehor - mahogany bowl

James Norton - ash platter

Larry Walrath - natural edge arbor vitae vase

Thanks to all who helped out.



It may look like this newsletter is the result of great planning and organization and that things fall together nicely each month. I hate to disillusion you, but it doesn't really work that way. Instead, it usually comes together in one frantic rush just before the deadline.

Inevitably, several things go wrong. I usually don't get to take many notes during the demonstration, as that is about the only time to take photographs of the Show and Tell and Bring Back items. So I try to scratch down a note or two and watch as much as I can. If a well prepared demonstrator has a handout, I usually skip the notes. That works if I don't lose the handout as I did this month. Then I am in real trouble trying to pull an article together and it is too late to try to get a second copy.

The process is further complicated by an aging memory. I jot down notes about things that should be included in the next issue as they occur to me - mostly, except when I don't. Then there is the stuff I think I remember, like when the President's Challenge is due. I managed to get that wrong twice, oblivious to what Drew had told me.

Finally, I am the world's worst proofreader of my own stuff. Most of the really loopy errors come from my cutting and pasting from issue to issue. The last two months, I made exactly the same error on the meeting announcement on page one, failing to correct the date from the previous month. Both times, Larry Walrath caught it and I revised it in the web site issue, but those who get the printed copy got the big mistake.

Somehow, though, it always seems to come together in fairly good shape and I've learned just not to worry about the errors.

This is the time of year when I like to thank those folks who make my job easier. Special thanks are due to **President Drew Shelton**, first for his outstanding leadership over the last year, but especially for the help he has given me. He has not only faithfully gotten his column in on time every month, but he has also been my dependable photographer. You can thank him for most of the photographs that make the newsletter livelier each month. Plus, the Round Rock donuts

he brings to First Saturday aren't bad either. **Gene Stokes** is equally prompt in getting the demonstration write-ups to me each month. Several of you have contributed items for the newsletter including **Craig Timmerman**, **Johnny Tolly** and **Jerry Whiteaker**. There are probably others, but I am up against the deadline and don't have time to go through all ten issues. If you contributed and I didn't list your name, thanks for your help anyway.

Finally, thanks to **Larry Walrath**. He promptly posts the latest edition each month after getting it at the last minute. I hope you have all noticed what a great job he has done with our web site. Plus, he's a pretty good final proofreader.

I have converted all of the 2007 newsletters to the high resolution photo versions you have seen the last couple of months. I am sending them to Larry one at a time and he is replacing the low res versions on the web site. I don't plan to go back any further at this point, but I can easily and quickly turn out a higher res version of any past issue. If you have an issue that you want a really good printed copy of for your file, let me know and I can burn you a copy on a CD.

Now, I'd best get a copy of this off to Larry and a copy in to the printer. Then I need to go out and start planning my demonstration. See you at the meeting.

Keep on turning,

Charlie Kay

Volunteer Instructors

The following turners have generously offered to open their shops and give their time to any member who wants to learn how to sharpen their tools, sharpen their skills, learn how to make a bowl or "test" the newest tool. Check out the people who bring items to Show and Tell. One trait common to all woodturners is that we all like to share, so just ask!

SOUTH

Bill Hammack	512.282.0832
Stacey Hager	512.282.1036
Johnny Tolly	512.858.4471
Jimmy Tolly	512.894.0686
Craig Timmerman	512.288.3598

NOTE: The Tolly brothers work strange shifts, so they may be available on times other than weekends.

H. O. Evans	512.282.2830
--------------------	---------------------

NOTE: Ho would like to confine his assistance to his specialty, segmented turnings.

NORTH

Rusty Myers	512.218.1606
Frank Miller	512.335.4768
Judy Williams	512.836.7897

ROUND ROCK

Larry Walrath	512.255.5379
----------------------	---------------------

LOCKHART/SAN MARCOS

David Dick	512.357.6517
Curtis Seebeck	512.738.0775

2007 Demonstration Schedule

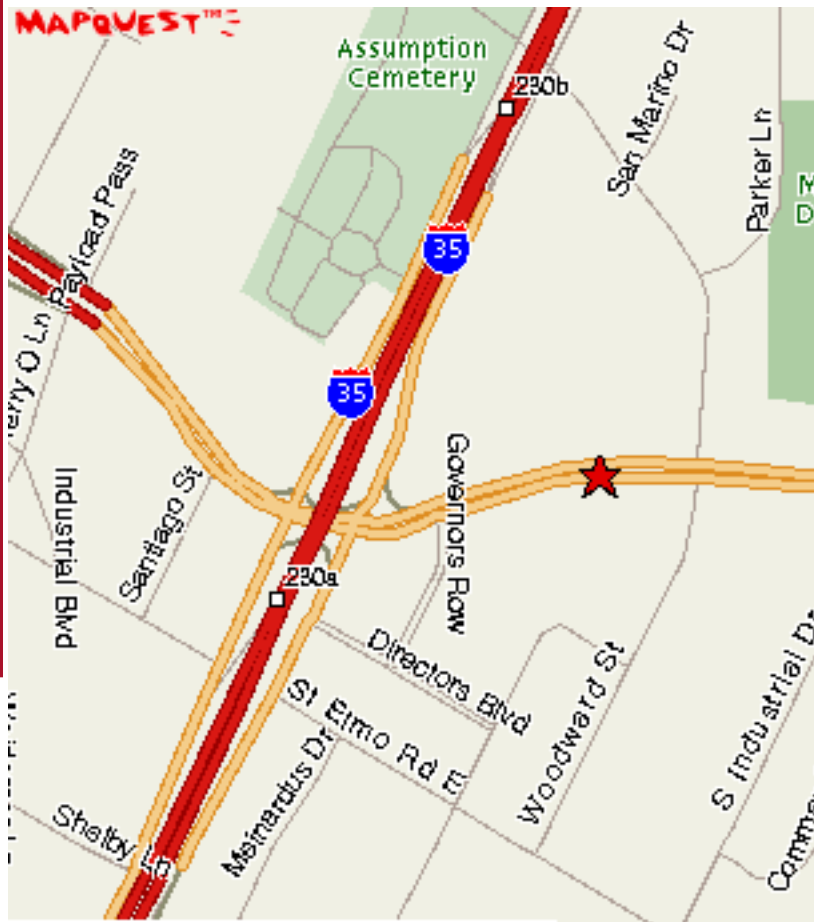
November 20
January 15, 2008
February 19
March 18

Charlie Kay
To be announced
To be announced
To be announced

If you are interested in being a Demonstrator at one of our meetings, or want to suggest a demonstrator, get in touch with **Program Chairman Gene Stokes**.

Meeting Location

The CTWA meets at American Youth-Works, 1901 East Ben White Boulevard (Texas 71) in south Austin. The building is on the south side of Ben White, just east of Interstate 35. The best entry is off Woodward Street, just south of a little strip center. You enter an alleyway into a lighted parking lot. We will enter through the back door. As you drive in, you will see a truck dock in the back of the building with a big roll-up white door. The entryway is just to the right of the truck dock. Folks coming from the north may want to exit I-35 at Woodward and proceed south on Woodward across Ben White.



The Chip Pile
Central Texas Woodturners Association
A chapter of the American Association of Woodturners

Charles Kay, Editor
100 Matzig Cove
Buda, TX 78610-3108

To: