



The Chip Pile

The Newsletter of the Central Texas Woodturners Association

Austin, Texas

A Chapter of the American Association of Woodturners

CTWA Meetings

MARCH MEETING

Tuesday, March 20, 2007

7:00 - 9:00 PM

American YouthWorks - Austin, Texas

1901 East SH 71

(about 1/4 mile east of I-35 on south side of SH 71)

FIRST SATURDAY TURNOUT

The First Saturday Turnout for April will be held on April 7, at 9:00 AM at Charlie Kay's shop, 100 Matzig Cove, Buda

few years. My wife read the invitation out loud yesterday, announcing that they don't want any presents. Drat! I guess I'll have to keep it for myself.

We are fortunate to have **Michael Hosaluk** as our spring demonstrator this year. There will be two days of demonstrations on April 28 and 29 in our usual meeting room at American YouthWorks. The demonstrations will be followed by three days of hands-on classes. We are still looking for a shop for these classes. I realize that this is short notice. However, Michael had very few dates open in the spring and none again until October, just before SWAT. Many of you will remember that Michael demonstrated at SWAT in Temple in 2004 and his sessions were quite popular. If you saw those demonstrations and want more details, now is your chance. Many of his items are unique and certainly creative. Details are still being worked out on fees and registration. I will be letting you know about that soon.

First Saturday for March was at **Jim Brinkman's** shop. Jim's shop is a two car garage much like mine. Somehow, though, he still manages to park not just one, but two cars in it. I have to walk sideways through much of mine, and no cars have been in it for years. **Lynn Kramer** made some pens which he then gave away and **Doug Green** brought a display rack of fine laminated pens (which he did not give away!). **Jerry Whiteaker** brought a very interesting sphere box with two parallel rectangular wings, all turned as one piece. My knuckles hurt just looking at it. It would make a blood-curdling demo and would require a well-defined "corridor of death" in front of the lathe, but I'd like to see it all the same. There was also much discussion of the article in the latest issue of **American Woodturner** on building your own Rose-engine lathe. Lynn Kramer seems serious about trying it and I'm looking forward to the demo!

Clyde Little is ready to assume his duties as Membership Chairman for 2007. I will pass "the box" to him at the March meeting. If you still have not paid your 2007 dues, please pay Clyde at the meeting.

Drew

Welcoming Spring

My shop is heated, but I don't have a dust collector. So I limit my woodworking while the shop is closed up. Instead of a dust collection system I have a dust redistribution system, a three foot diameter fan that blows across my lathe, sending most of the dust and chips onto the driveway and my car. Sometimes when it's cold I'll open the garage door, turn on the fan, and stand at the lathe until I can't feel my fingers. The warmer evenings lately have made it easier for me to let the chips fly. I've been working on an afzelia burl lidded vessel to give as a wedding present to my aunt who is getting re-married after being a widow for quite a

From the President's Shop

Monthly Features

Calendar, page 5
Classified Ads, page 7
Demo Schedule, page 8
First Saturday, page 6
Membership Information, page 5
Shop Crawl Schedule, page 6
This Month's Program, page 5
Upcoming Symposiums, page 8
Volunteer Instructors, page 8

February Demo

Turned Jewelry

Our featured demonstrator for February was talented turner **Joel Crabbe**. We have all admired Joel's turnings of beautiful boxes, vessels and wooden jewelry, and this was our chance to see how he turns a pendant and matching pair of earrings out of end-grain mesquite. He favors end-grain

see January Demo, page 2

The American Association of Woodturners is "dedicated to Providing Education, Information and Organization to Those Interested in Woodturning." In keeping with the standards of our National Organization, the Central Texas Woodturners Association hereby gives permission for all other woodturning chapters, organizations, magazines and newspapers to use any materials contained herein for the benefit of all woodturners everywhere. We ask that credit be given for the source of the material.

2007 Officers

President

Drew Shelton
512.863.4651
dcshelton@gmail.com

President Elect

Craig Timmerman
512-288-3598
craig@heartoftexaschorus.org

Program Chairman

Gene Stokes
512.288.3598
gstokes1@austin.rr.com

Secretary/Newsletter Editor

Charlie Kay
512.295.2144
ckay@austin.rr.com

Treasurer

Ed Roberts
512.255.3294
eroberts6@juno.com

Membership Chairman

Clyde Little
512.413.6931
clyde2044@yahoo.com

Webmaster

Larry Walrath
512.255.5379
larry@larrywalrath.com

Audio/Visual Coordinator

Frank Miller
512.335.4768
millerstexas@msn.com

Librarian

Betty Hager
512.282.1036
staceyhager@hotmail.com

CTWA Web Site

www.ctwa.org

Editorial Information

This newsletter is by and for members. The Editor welcomes any written materials and will provide assistance with getting your information into publishable form if you want. **DEADLINE IS THE FIRST MONDAY OF THE MONTH.** Contact me with your ideas and drafts by phone at 512.295.2144, by E-mail at ckay@austin.rr.com or mail them to:

The Chip Pile
c/o Charles Kay
100 Matzig Cove
Buda TX 78610-3108

January Demo

in hard wood for these pieces, and his preferred finish is Myland's sanding Sealer followed with shellac.

Joel first turned the earring hoops by flattening the face of the blank, then



parting in to define the inside of the hoop. He then used his Axminster



eccentric chuck insert and rechunked the piece to turn the face convex, sanded and finished that face and then parted it off. He then used double stick tape to remount the hoop on the

blank and turned the other face concave, sanded and finished it.

For the pendant, Joel began by drilling a 3/8 inch hole in the top center of the blank for the leather thong. He then turned a gentle convex surface on the face. Using the Stott parting tool, he cut a 1/16 inch groove into the surface, being sure to go through the 3/8 inch hole. That was so he could insert the sterling silver wire into the groove



without worrying about how the ends line up. Once the wire was properly inserted in the groove he used cyanoacrylate glue to lock it in place. He used a file to machine the wire down flat while slowly turning the lathe by hand, before sanding and finishing. The piece is then parted off, reversed and the back turned before suspending it from the leather thong.

Thanks, Joel, for a fine demonstration. We expect to see more jewelry at Show and Tell.

Turned Jewelry References and Sources

Books:

The Art of Making Fine Wood Jewelry, Tony Lydgate, 1998, Sterling
Turning Wooden Jewelry, Judy Ditmer, 1994, Schiffer
Woodturning Jewellery, Hilary Bowen, 2005, Fox Chapel

Published Articles:

Dave Sheppard, "A Simple Bracelet," *American Woodturner* 15:3, 2000, pp 28-29
Denver Ulery, "Bracelets," *American Woodturner* 4:1, 1989, pp 10-11
Michell Hanes, "Turned Earrings," *American Woodturner*, 8:3, pp 6-7
Judy Ditmer, "Production Jewelry: Mini-Sculptures!," *American Woodturner*, 8:3, 1993, pp 2-5

Magazines:

Art Jewelry Magazine, Kalbach Publishing, www.artjewelrymag.com
Step-by-Step Wire Jewelry, Primedia, Inc., www.stepbystepwire.com

Sources for findings, metal, stones and beads:

Fire Mountain Gems and Beads, www.FireMountainGems.com
Rio Grande Jewelry, www.riogrande.com

Bring Back Raffle

Joel Crabbe was the winner of a maple plate, turned and decorated with pyrography by **Marcia Tolly** and finished with Deft. Visitor **Clint Jackson** took home a disk vase turned from elm and walnut and finished with Deft by **Craig Timmerman**. **Ed Roberts** picked up a goblet turned from Chinaberry and finished with shellac and wax by **Stacey Hager**. **Jerry Whiteaker** grabbed a \$15 gift certificate from Craft Supplies.

As is the custom, each of the winners of turned items will bring back a turned item to the next meeting. The visitor does not have to bring



back a turned piece; one will be supplied by one of the officers. No bring back item is required for the gift certificate. The Bring Back items should be representative of each person's



best work.

It should be noted that the Bring Back Raffle is meant to be a fun event. No one is grading you on the quality of your work. Just bring a piece that represents the best that YOU can do.

If you don't have a lathe or feel like you have enough experience, contact one of our Volunteer Instructors to help you prepare a Bring Back piece.

Show and Tell

Jerry Whiteaker brought a pair of finial boxes of cedar elm, finished with Turner's Stick Finish - Lebron.



Stacey Hager showed off "Emergence," a spherical box emerging from a square, turned of ash and finished with shellac.



Joel Crabbe displayed a pair of boxes, one of mesquite burl with a mesquite thorn finial and the second of black palm with



a satinwood finial, both finished with lacquer and wax.

Betty Hager showed off a Roman vase, turned from sycamore by Stacey and decorated with her pyrography.



Larry Walrath brought along a large vase of mistletoe cedar elm finished with tung oil in citrus solvent.

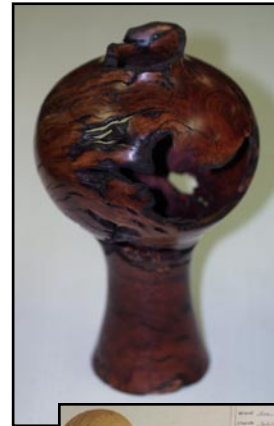
Craig Timmerman showed off a piece he called "Barely Hangin'

in There" turned from a manzanita root burl and finished with Mahoney's as well as three small boxes of ash, elm maple and cedar elm that the had turned at the last First Saturday. All were finished with Deft.



David Pugh shared six bracelets, four of them decorated with beads.

Jim Spano brought a pair of disc vases, one of satinwood and one of cherry, both finished with shellac and wax. He also brought his fancy mandrel he used to turn them.



Ho Evans showed a small segmented bowl of walnut, maple and redheart, finished with Deft.

Johnny Tolly brought a bowl full



of small boxes he called "Went Nuts," of real acorn cups and turned wood, as well as a pair of ice scrapers of ipe and mesquite.



Len Brissette shared a plate of laminated purpleheart, mesquite and walnut, finished with Mahoney's.

Mack Peterson showed off five pieces of various descriptions, including one of mesquite and gourd that he called

see Show, page 4

Show & Tell

"Blooming Mesquite," as well as others of pecan/purpleheart, walnut, pecan and padauk.



Jimmy Tolly brought along a piece he had



Frank Miller brought a fancy desk pen as well as several counter top towel racks, as well as the mandrel he turned from brass to make the center sections for the towel racks.



turned from PVC to make a needed part for his rainwater collection system.



Jack Besperka shared two items, an Indian bowl turned from ash, bleached and textured and finished with wax, and an Indian pot also turned from ash, bleached, textured and carved and finished with wax.



Cindy Drozda Boxes

At long last, we finally conducted the Raffle of the three Cindy Drozda lidded boxes, almost a year after she left them with us after her weekend demonstrations.

The holders of the three lucky five dollar tickets were **Hal Sanders** (banksia pod box), **Ed Roberts** (triangle box with view holes) and **Stacey Hager** (finial box). Congratulations to the winners. The rest of us are jealous. Thanks to all who bought tickets and special thanks again to Cindy for donating the boxes to the club for the raffle.



Simply Spindles - Take Two

Our demonstrator for March is **Judy Williams**, CTWA's own *Mistress of Lace Bobbins*. This demonstration was scheduled for our January meeting, the one that was cancelled due to the ice storm. Judy describes her demonstration plans this way:

I am a spindle turner and although I specialize in lace bobbins I do, at times, turn larger pieces as well. This will be a demonstration

of techniques of spindle turning with emphasis on tool control and the use of various kinds of tools. Although this demonstration could be classified as a basic "how to", I hope that members will be able to take away a tip or two to enhance their own turning.

For far too long, spindle turners have not been given their due recognition in the turning world. Usually a new turner will mangle a pen or two and go on the bowls and vessels and being very "creative." Spindle turners often get classified as only production turners (think furniture legs, chair rugs, etc) yet there is far more to this type of turning than merely duplicating beads on a stick. This demonstration will show how different tools cut wood as well as the many ways a single tool can cut.

Gene Stokes

We had 49 attendees at our February 20 meeting, including five visitors.

Steve Gottlieb gave us a rundown on SWAT plans for 2007, including an explanation for the increased registration fee.

Johnny Tolly gave his take on the SWAT planning meeting in Waco in January. He also asked for volunteers to help with judging the Industrial Arts Fair in Waco later in the spring.

President Drew Shelton reminded us that our 2007 Dues are past due.

Len Brissette advised us that contrary to the notice in the newsletter, the March First Saturday event would be held at **Jim Brinkman's** shop and not Lens's.

If you haven't paid your CTWA dues for 2007, you are now officially in arrears. Remember that our dues are our primary source of funds, paying for such things as subsidizing our spring outside demonstrator weekend, the Christmas party and our new audio visual setup. Since the AAW is having a drawing for a Powermatic lathe as an incentive to renew online, we're focusing on collecting just the \$25 local dues for 2007. Anyone who doesn't want to renew their AAW membership online can still pay us the additional \$40

AAW dues (\$45 for family) and we will pass it along as we always have in the past.

You can either pay at the meeting or mail a check to:

Clyde Little
14307 Geronimo
Volente, TX 78641

Membership in CTWA

New members are welcome to join CTWA at any time. All you need is an interest in woodturning. CTWA membership also requires membership in the American Association of Woodturners (AAW). Local dues are \$25.00 per year, or \$2.10 per month, prorated for new members joining during the year. AAW dues are \$40.00 per year for individuals and \$45.00 for families. For that, you get a first class quarterly magazine, **American Woodturner**, with excellent articles on woodturning and woodturners, amply illustrated with color photographs.

To learn more about membership or want to join CTWA, contact our Membership Chairman:

Clyde Little
14307 Geronimo
Volente, TX 78641
clyde2044@yahoo.com
512.413.6931

Calendar

The calendar listings are an attempt to keep you up to date on upcoming CTWA events, as well as other events of particular interest to woodturners.

April 17, 2007 - 7:00 to 9:00 PM
CTWA Meeting - American YouthWorks

April 7, 2007 - 9:00 AM to Noon
First Saturday - Charlie Kay's Shop

April 17, 2007 - 7:00 to 9:00 PM
CTWA Meeting - American YouthWorks

April 28 & 29, 2007 - All Day
Michael Hosaluk Demos
- American YouthWorks

May 5, 2007 - 9:00 AM to Noon
First Saturday - To be announced

May 15, 2007 - 7:00 to 9:00 PM
CTWA Meeting - American YouthWorks

First Saturday - March

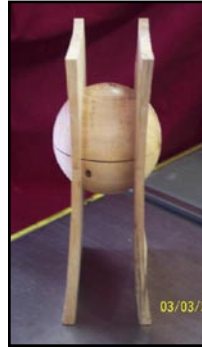
On March 3, eighteen or so of us showed up on a chilly morning at **Jim Brinkman's** shop. Jim has a well equipped and well organized shop in a double garage. Amazingly, he can still get two cars in the garage, having only to move his table saw out of the way. In addition to being a woodturner, Jim is also a talented wood carver and samples of his work are on a shelf in his shop.

Several of the folks were late, having judged it more important to get to the



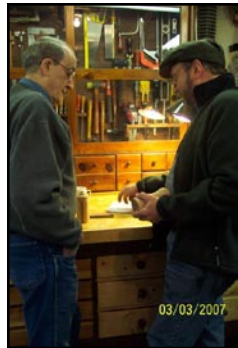
from cedar elm. To everyone's surprise, Jerry still has all his fingers. Quite an impressive piece.

When all was said and done, several of us headed over to the Tea House for a Vietnamese lunch.



one day sale at Woodcraft first. Others opted to skip lunch and head to the sale as soon as the First Saturday event broke up.

Lynn Kramer was set up on his mini-lathe turning pens and giving them away and showing those who were interested how it is done. **Judy Williams** was using Jim's CarbaTec to turn lace bobbins at the same time.



Doug Green impressed us with his laminated pens and his nifty display rack. **Jerry Whiteaker** brought along a double winged spherical box turned

First Saturday

Our April 7 First Saturday Shop Crawl will be held at **Charlie Kay's** shop, 100 Matzig Cove, Buda, (512.295.2144).

The Ruby Ranch subdivision is located about half-way between Buda and the Salt Lick Barbecue on RR 1826. You can get to RR 967 from I-35 by taking the Buda Main Street exit and turning west on RR 967 at the traffic light. Alternatively, you can get there from FM 1626 by following either Brodie Lane or Manchaca Road to their southern ends, then following FM 1626 south until it intersects RR 967. From the RR 967/FM 1626 intersection at a traffic light, proceed west for 2.5 miles and turn left on Ruby Ranch Road. From RR 1826, turn east on RR 967 just before the Salt Lick and go about six miles and turn right on Ruby Ranch Road. You will go 0.5 miles on Ruby Ranch Road and take the second left on Matzig Cove. It will be the first house on the right. If you are hopelessly lost, call 512.295.2144.

Bring your lathe and some wood if you would like. I have two lathes, but there should be room for several more if you want to bring your own. We have a circular drive. Unless it is really muddy, if you are bringing a lathe, go to the second driveway entrance and follow the "rut road" around to the shop. If you aren't bringing a lathe, you can turn in the first entrance and park. The shop is off to the right of the house.

As you have read elsewhere in this issue, we have lined up **Michael Hosaluk** as

Michael Hosaluk



our featured demonstrator for this spring. Many of you got the chance to see Michael demonstrate at SWAT in Temple in 2004. The weekend all-day demonstration sessions will take place at our usual American YouthWorks meeting place on Saturday and Sunday, April 28 and 29. As with Cindy Drozda and Lyle Jamieson, the

2007 First Saturday Shop Crawl Schedule

- April 7
- May 5
- June 2
- July 7
- August 4
- September 1
- October 6
- November 3
- December 8 (Christmas Party)

- Charlie Kay**
- Volunteer Needed**
- Volunteer Needed**
- Volunteer Needed**
- Volunteer Needed**
- Volunteer Needed**
- Volunteer Needed**
- Volunteer Needed**

As you can see, we have a serious shortage of sites for this popular event for the rest of the year. You don't have to have a fancy shop to host it, just a place for folks to congregate and drink coffee, eat donuts, and maybe for one or two to turn. To volunteer to host a First Saturday Shop Crawl, get in touch with Len Brissette.

weekend sessions will be followed by hands-on sessions beginning on Monday.



Michael lives and has his studio just outside Saskatoon, Saskatchewan. He is internationally recognized as one of the world's most creative wood "turners". His work covers a wide range of



objects and materials including functional vessels, furniture and sculptural pieces. His work is humorous and elegant, possesses character and gesture



and is full of reference to architecture, nature and culture. Hosaluk's work has been exhibited throughout Canada, in Europe, China, Japan, Australia and the United States.

Michael is a good teacher of techniques and tools, and is well known for his whimsical and highly decorated turnings.

Details of the various events are not yet final, but expect them to be set up similar to the way they were handled for Cindy and Lyle. Costs are likely to be similar as well. Watch your E-mail for detailed information, but go ahead and mark your calendars now.

Web Site

Check out the CTWA Web Site at www.CTWA.org. If you have comments, suggestions or something for the gallery, get in touch with **Webmaster Larry Walrath** at larry@larrywalrath.com.

E-mail

It is your responsibility to see that acting Membership Chairman **Clyde Little** has your correct E-mail address. You can contact him at clyde2044@yahoo.com. We regularly use E-mail to advise members of important announcements on short notice. If Clyde doesn't have your current E-mail address, we can't contact you.

SWAT 2007

As you will have noticed, if you have accessed the web site, www.swaturners.org, the SouthWest Association of Turners has a new look. The old logo is gone, although I will continue to use it to highlight my monthly information column on the upcoming Symposium, as there is no new logo. Instead, there are new colors and a "masthead." All of this is

part of an effort to recast the SWAT designation as SWATurners. We



humans being creatures of habit, it will be interesting to see how successful this transformation is.

When you go to the web site, you will find it to be a classy job that is easy to navigate. It has all that you need to know about this year's Symposium,



scheduled for October 5 - 7, in Wichita Falls, Texas. You can register on line with your credit card if you would like. You can also download the latest copy of the newsletter and print it if you want. If you print the newsletter, you will have a hard copy of registration form and can register by mail if you would prefer. The web site also gives you the necessary information to book

lodging in Wichita Falls. The usual brochure, containing a registration form, will be mailed later, probably in May.

As reported last month, Lead Demonstrators will be **Stuart Mortimer, David Marks, Alan Stirt, Cindy Drozda, J. Paul Fennel** and our own **Stacey Hager**. Although the Lead Demonstrators have been identified Demonstration Committee Chairman **Craig Timmerman** is still looking for regional demonstrators. Check Craig's column elsewhere in this issue for details and get your application in.

CTWA Supporters

We don't recognize often enough those businesses that support our club. If you don't already do so, be sure to support those folks that support us, either through discounts or gift certificates.

**Woodcraft
Craft Supplies USA
The Cutting Edge**

Photos

Photographs for this month's **Chip Pile** were provided by **Drew Shelton** and **Len Brissette**. If you have digital photos that you would like to have considered for use in the newsletter. Send them to the Editor at ckay@austin.rr.com.

CLASSIFIED ADS

Free personal classified ads are available to all members of CTWA to sell, buy or trade woodworking related items. To place an ad, contact **Charlie Kay** at 512.295.2144 or via E-mail at ckay@austin.rr.com. Ads will be run for two months and then dropped.

2007 Demonstration Schedule

March 20	Judy Williams - Spindle Turning
April 17	To be announced
May 15	Johnny Tolly
June 19	To be announced

If you are interested in being a Demonstrator at one of our meetings, or want to suggest a demonstrator, get in touch with Program Chairman Gene Stokes.

Volunteer Instructors

The following turners have generously offered to open their shops and give their time to any member who wants to learn how to sharpen their tools, sharpen their skills, learn how to make a bowl or "test" the newest tool. Check out the people who bring items to Show and Tell. One trait common to all woodturners is that we all like to share, so just ask!

SOUTH

Bill Hammack	512.282.0832
Stacey Hager	512.282.1036
Johnny Tolly	512.858.4471
Jimmy Tolly	512.894.0686
Craig Timmerman	512.288.3598

NOTE: The Tolly brothers work strange shifts, so they may be available on times other than weekends.

H. O. Evans	512.282.2830
-------------	--------------

NOTE: Ho would like to confine his assistance to his specialty, segmented turnings.

NORTH

Rusty Myers	512.218.1606
Frank Miller	512.335.4768
Judy Williams	512.836.7897

ROUND ROCK

Larry Walrath	512.255.5379
---------------	--------------

LOCKHART/SAN MARCOS

David Dick	512.357.6517
Curtis Seebeck	512.738.0775

From the Editor's Desk

Things are looking up in Central Texas as spring is in full swing. The cardinals arrived this week, just after the robins finally left. The robins hung around for about six weeks this year, by far their longest stay in the ten years we have been living here. Some years we don't see them at all.

The onset of spring announced itself in a big way this week, with major rainfall throughout the area. We only got a little less than three inches here, but there was enough in the watershed west of us to get Onion Creek flowing again. That is good news for the Barton Springs segment of the Edwards Aquifer. When Onion Creek is flowing, the aquifer is full. At worst, it is better off than it has been in a couple of years.

All of that rain has turned everything emerald green overnight. We're always a couple of weeks behind Austin, but the redbuds and wild plums have been blooming for ten or twelve days, and the agarita blossoms have really perfumed the air around here.

Last week, I read through Harvey Green's **Wood - Craft, Culture, History**. The book takes a look at the use of wood throughout history and its effect on culture, the building of empires and how important it was in almost every aspect of our lives until

quite recently. It is also discouraging to see how mankind has treated wood as an inexhaustible resource over time, in many cases until complete and unrecoverable deforestation had occurred. There are a few cases where governments acted soon enough over the centuries to move to sustainable forests, most notably China and various countries in Europe. This was usually for reasons of empire, wood being indispensable to maintaining a navy. Most of us remember from our American history that the primary reason that Britain didn't want to lose their North American colonies was because they desperately need our white pines (for masts) and live oaks (for keels and spars).

While Green isn't the most readable author, the book is interesting to those of us who are hooked on wood. His brief mention of wood in pencils led me to pick up and re-read one of my favorite books, **The Pencil**, by Henry Petroski. It is a fascinating story of the evolution of the pencil over the centuries. The first ones were made by cabinet makers, as they were the only ones with the tools and expertise to cut the grooves for the lead in two pieces of wood, then glue them back together. Petroski is one of my favorite writers. He is a civil engineering professor at Duke and a fine story teller. He has books out on several subjects, including the design and engineering of bridges. If you haven't read him, check out some of his stuff.

I have managed to do a little turning the last week or so, but the fine spring weather may keep me out of the shop for awhile. Then I need to get out and clean up a bit for the April First Saturday. Hope you can make it for that event.

Don't forget to put the Michael Hosaluk sessions on your calendar for the end of April. I think you will really enjoy the demonstrations and hands-on classes.

See you on Tuesday.

Charlie Kay

Upcoming Woodturning Symposiums

Southern States Symposium

April 27 - 29, Gainesville, GA
www.gawoodturner.org

Yankee Woodturning Symposium

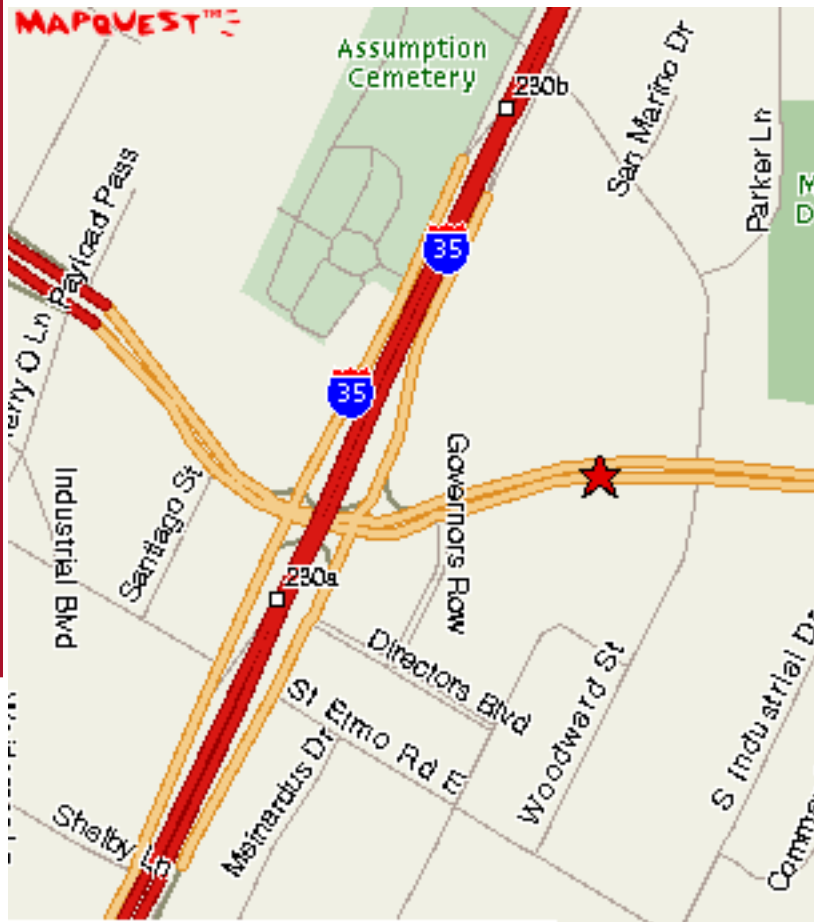
June 1 - 3, Middletown, CT
www.yankeewoodturningsymposium.org

AAW National Symposium

June 29 - July 1, Portland, OR
www.woodturner.org

Meeting Location

The CTWA meets at American Youth-Works, 1901 East Ben White Boulevard (Texas 71) in south Austin. The building is on the south side of Ben White, just east of Interstate 35. The best entry is off Woodward Street, just south of a little strip center. You enter an alleyway into a lighted parking lot. We will enter through the back door. As you drive in, you will see a truck dock in the back of the building with a big roll-up white door. The entryway is just to the right of the truck dock. Folks coming from the north may want to exit I-35 at Woodward and proceed south on Woodward across Ben White.



The Chip Pile
Central Texas Woodturners Association
A chapter of the American Association of Woodturners

Charles Kay, Editor
100 Matzig Cove
Buda, TX 78610-3108

To: